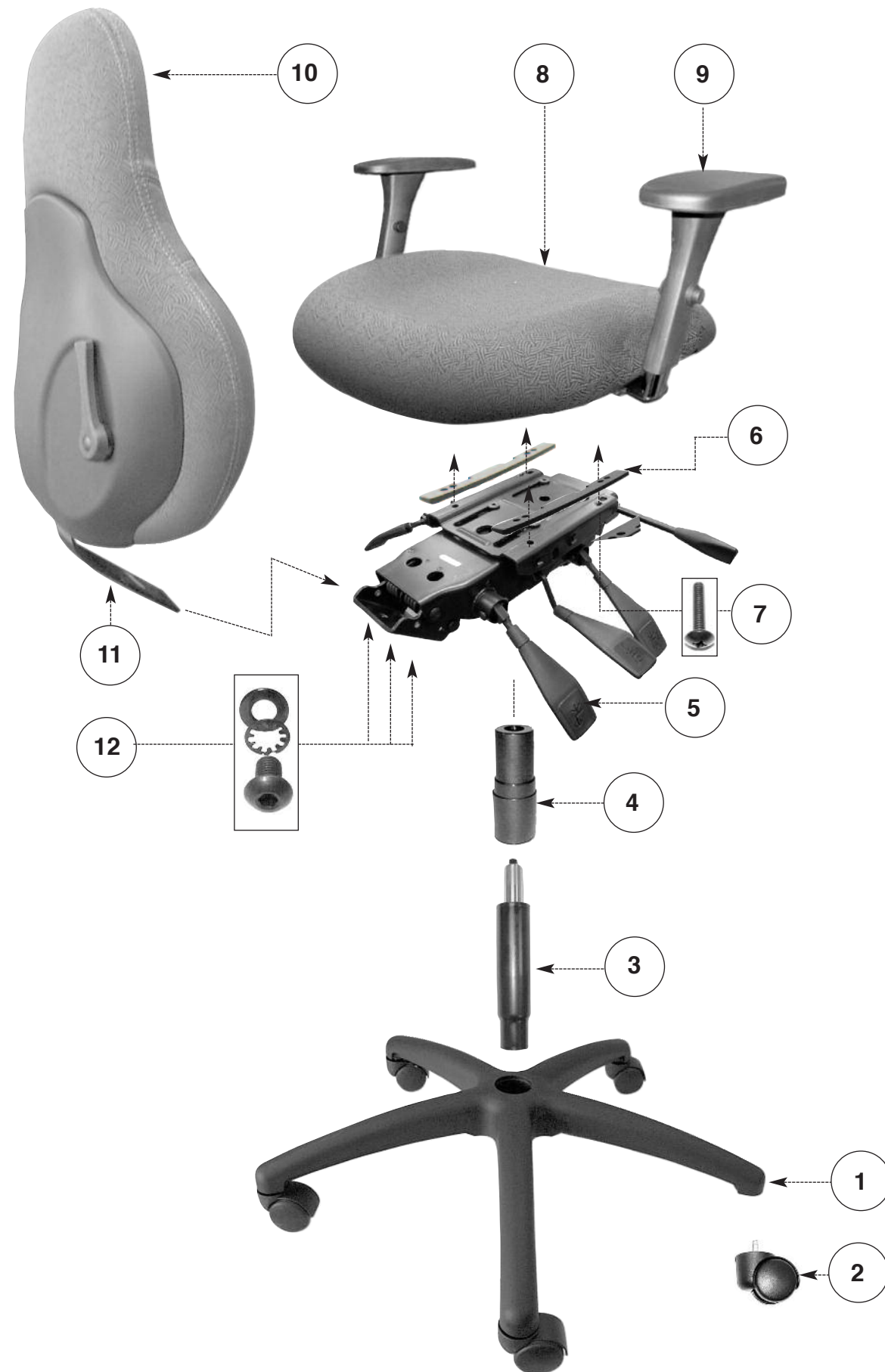


DISASSEMBLY INSTRUCTIONS: "TRITEK" MODEL #7482-3

Product designed for disassembly in a reasonable time frame (5 minutes or less)

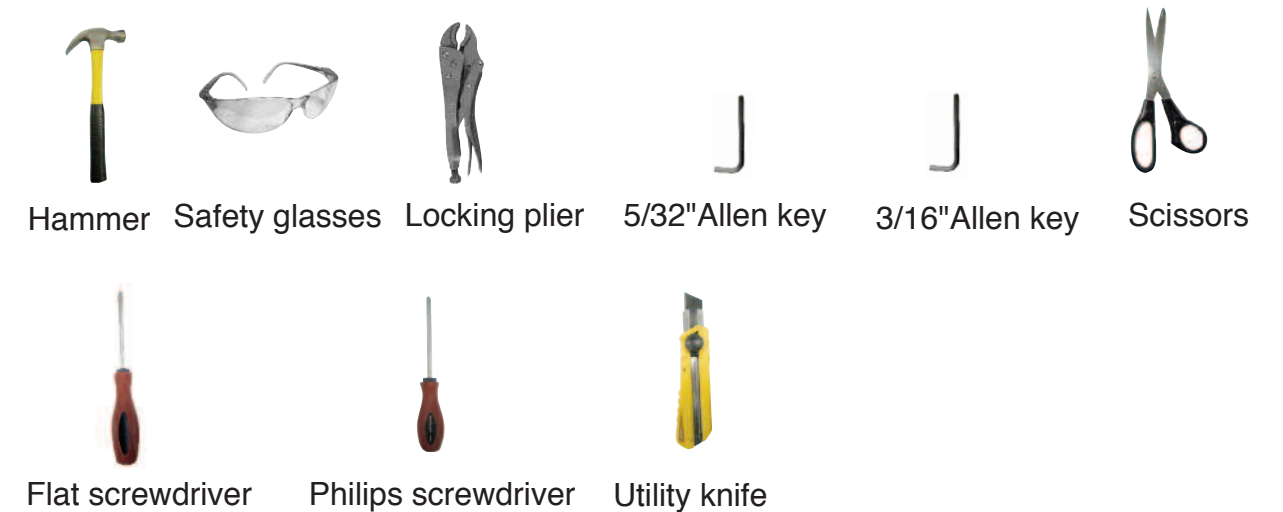


ITEM	DESCRIPTION	QTY	MATERIAL
1.	Base	1	Nylon (PA)*
2.	Casters	5	Nylon (PA)* / Steel
3.	Gas cylinder	1	Steel
4.	Tele Cover	3 Pc	Plastic (PP)**
5.	Mechanism	1	Steel / Nylon (PA)*
6.	Spacers	2	Plastic (PP)**
7.	Mechanism Screws	4	Plywood / Slab Foam / Fabric
8.	Seat	1	Nylon (PA) / Steel / Plastic (PP)**
9.	Arms	Pr	Molded Foam / Plastic (PP)**
10.	Back	1	Molded foam / Plastic (PP)**
11.	Back Upright	1	Steel
12.	Back screws/washers	9	Steel

NOTE:

(PA)* -- POLYAMIDE
 (PP)** -- POLYPROPYLENE

REQUIRED TOOLS



IMPORTANT

Please exercise caution when disassembling your chair for recycling. Please ensure that you have the correct tools for disassembly. Tools can be sharp and some components are heavy. Orient tools away from the body in case sudden slippage occurs. Global accepts no responsibility for any damage, accident or injury that may occur during disassembly.

GLOBAL UPHOLSTERY CO. INC.
 560 SUPERTEST RD. DOWNSVIEW, ONT.
 M3J 2M6, CANADA
 TEL. (416) 661-3660
 FAX. (416) 661-4300

A. Detach the Back upright (11) from the Mechanism (5) use an Allen key to unscrew the screw set (12).

B. Using a scissor, pry out plastic snap plug (10.8) from Lumbar lever (10.10) . Unscrew lever attachment screw (10.9) from Lumbar lever (10.10). Pry out Lumbar lever with a flat screwdriver.

C. Using the claw end of a hammer, detach back plastic shroud (10.7) from upholstered back assembly (10.1)

D. Unscrew the four back upright attachment screws (11.4) to detach back upright (11.1), metal plates (11.3) and plastic spacer (11.2) from the back.

E. Unscrew the two screws (10.4) to detach the Lumbar actuator (10.5a) from the back. Unscrew four screws & washer to detach plywood lumbar block (10.2) from upholstered back (10.1) and cut the string from the plywood block.

F. Unscrew the two screws (10.6) to detach Lumbar mechanism (15) from Lumar plywood (10.2)

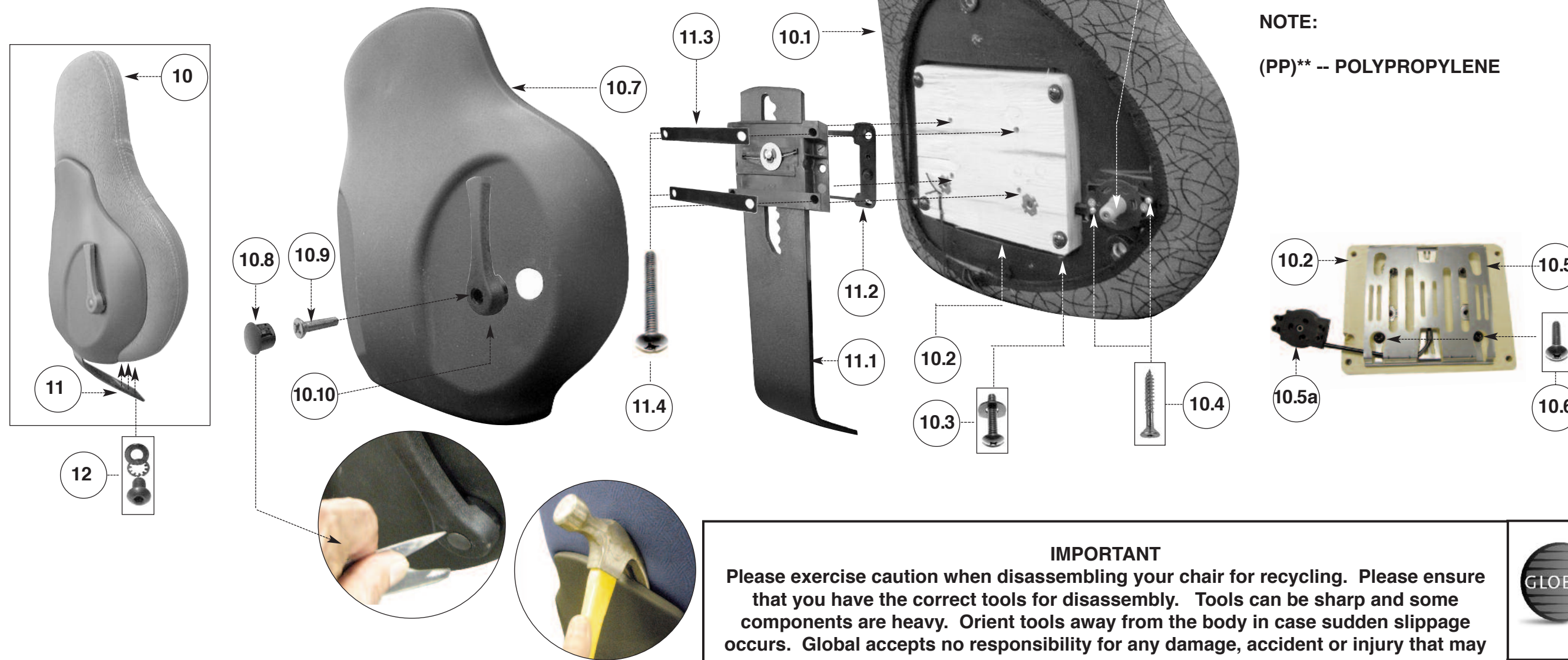
G. Cut off the knot in the back upholstery and remove the staples with a flat screwdriver. Pull out the back upholstery fabric from the back.

DISASSEMBLY BACK/ BACK UPRIGHT

ITEM	DESCRIPTION	QTY.	MATERIAL
10.1.	Upholstered Back	1	Molded foam/Plastic (PP)**/ Fabric
10.2.	Lumbar block	1	Pywood
10.3	Screws / washers	4	Steel
10.4	Actuator screws	2	Steel
10.5	Lumbar mechanism	1	Steell / Plastic (PP)**
10.5a	Lumbar Actuator	2	Steel
10.6	Lumbar screws	2	Seel
10.7	Back shroud	1	Plastic (PP)**
10.8	Snap plug	1	Plastic (PP)**
10.9	Lever screw	1	Steel
10.10	Lumbar lever	1	Plastic (PP)**
11.1	Back Upright	1	Steel
11.2	Plastic spacer	1	Plastic (PP)**
11.3	Metal plates	2	Steel
11.4	Backupright screws	4	Steel
12	Bu / Mech. screws	3	Steel

NOTE:

(PP)** -- POLYPROPYLENE

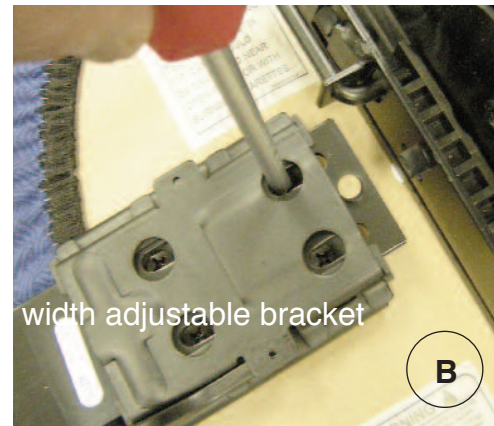
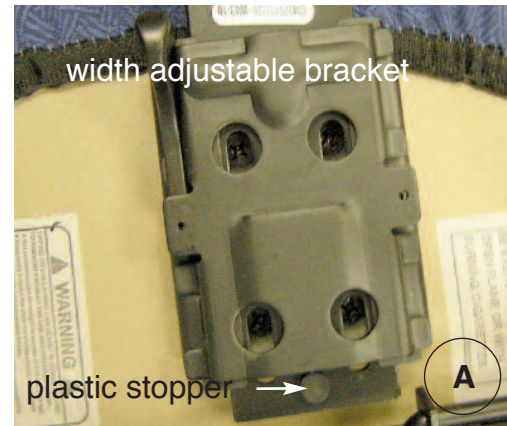


IMPORTANT
 Please exercise caution when disassembling your chair for recycling. Please ensure that you have the correct tools for disassembly. Tools can be sharp and some components are heavy. Orient tools away from the body in case sudden slippage occurs. Global accepts no responsibility for any damage, accident or injury that may occur during disassembly.

GLOBAL UPHOLSTERY CO. INC.
 560 SUPERTEST RD. DOWNSVIEW, ONT.
 M3J 2M6, CANADA
 TEL. (416) 661-3660
 FAX. (416) 661-4300



DISASSEMBLY OF ARMS / SEAT



DISASSEMBLY OF WIDTH ADJUSTABLE ARM BRACKETS / SEAT

- A. Using a flat screwdriver and hammer, shear off the plastic arm stopper. Unlock the lever in the width adjustable bracket and pull out the arms (9)
- B. Using a Philips screwdriver unscrew the four screws that attach the width adjustable brackets to the seat.

DISASSEMBLY OF ARMS

- C. Detach the Arm bracket (9.13) from the Arm post (9.1) by unscrewing the screws (9.12)
- D. Using an flat screwdriver pry out the button cap (9.2) from the Arm post (9.1). Unscrew screw with washer (9.3) and pull out the button mechanism (9.4).
- F. Pull out the arm height activating metal tube (9.5) from Arm post (9.1)
- G. Detach the molded arm pad (9.7) from the pad housing (9.8) by unscrewing the six screws (9.6)
- H. Detach pad housing (9.8) from Adapter flange (9.11) by unscrewing housing screw (9.9)
- I. Detach Adapter flange (9.11) from Arm post (9.1) by unscrewing the four flange screws (9.10)

ITEM	DESCRIPTION	QTY.	MATERIAL
9.1	Arm post	1	Nylon (PA)*
9.2	Button cap	1	Plastic (PP)**
9.3	Screws / washer	1	Steel
9.4	Button mechanism	1	Steel / Plastic (PP)**
9.5	Metal tube	1	Steel
9.6	Pad screws	6	Steel
9.7	Arm Pads	2	Molded foam
9.8	Pad housing	2	Plastic (PP)**
9.9	Housing screw	1	Steel
9.10	Flange screw	4	Steel
9.11	Adapter flange	1	Zinc
9.12	Bracket screw	2	Steel
9.13	Arm bracket	2	Steel

NOTE:

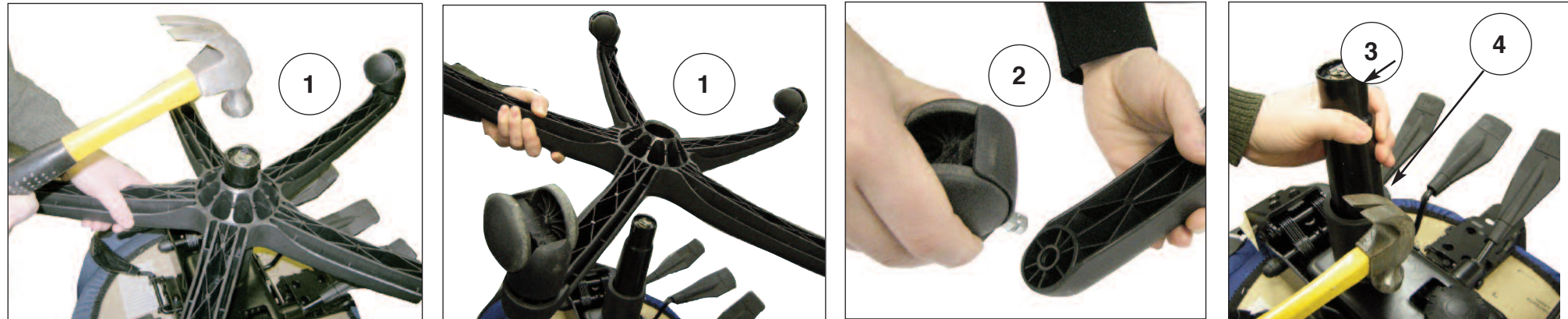
(PA)* -- POLYAMIDE
 (PP)** -- POLYPROPYLENE

IMPORTANT

Please exercise caution when disassembling your chair for recycling. Please ensure that you have the correct tools for disassembly. Tools can be sharp and some components are heavy. Orient tools away from the body in case sudden slippage occurs. Global accepts no responsibility for any damage, accident or injury that may occur during disassembly.

GLOBAL UPHOLSTERY CO. INC.
 560 SUPERTEST RD. DOWNSVIEW, ONT.
 M3J 2M6, CANADA
 TEL. (416) 661-3660
 FAX. (416) 661-4300

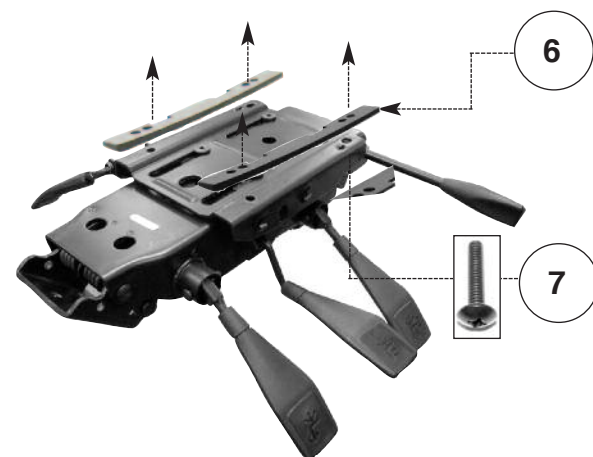
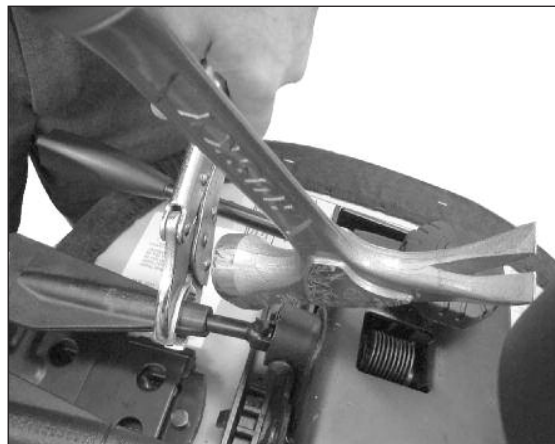
DISASSEMBLY INSTRUCTIONS: BASE / GAS LIFT / CASTERS



Remove the base (1) by striking the bottom edge of the Gas lift with a hammer. Pull out the casters (2) by hand. Remove the metal stem of the casters using a plier.

Holding the gas lift (3), strike the mechanism with a hammer to remove the gas lift and telescopic cover (4)

DISASSEMBLY: MECHANISM /PADDLES



Using a curved jaw locking plier, lock the plier around the neck of the paddle.

Hammer against the locking plier to detach plastic paddle from lever. Remove all paddles in this manner.

To detach the Mechanism (5) and Plastic spacers (6) From the Seat (8), unscrew the four screws (7)

IMPORTANT

Please exercise caution when disassembling your chair for recycling. Please ensure that you have the correct tools for disassembly. Tools can be sharp and some components are heavy. Orient tools away from the body in case sudden slippage occurs. Global accepts no responsibility for any damage, accident or injury that may occur during disassembly.



GLOBAL UPHOLSTERY CO. INC.

560 SUPERTEST RD. DOWNSVIEW, ONT.
M3J 2M6, CANADA
TEL. (416) 661-3660
FAX. (416) 661-4300