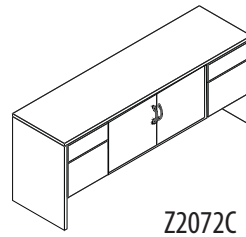




# ZIRA

Center Storage Credenza



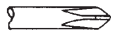
Z2072C

## Disassembly Instructions

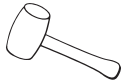
### TOOLS REQUIRED



WRENCH  
Size #16 or 5/8"



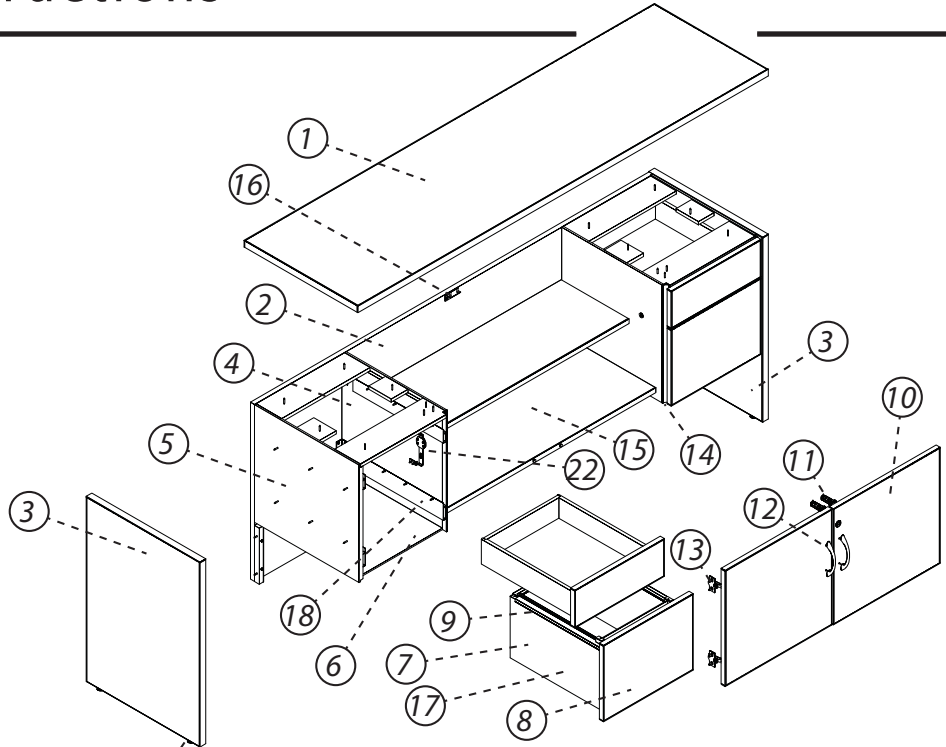
PHILLIPS  
Screwdriver size #2



Rubber Mallet



Safety Glasses



### STEPS

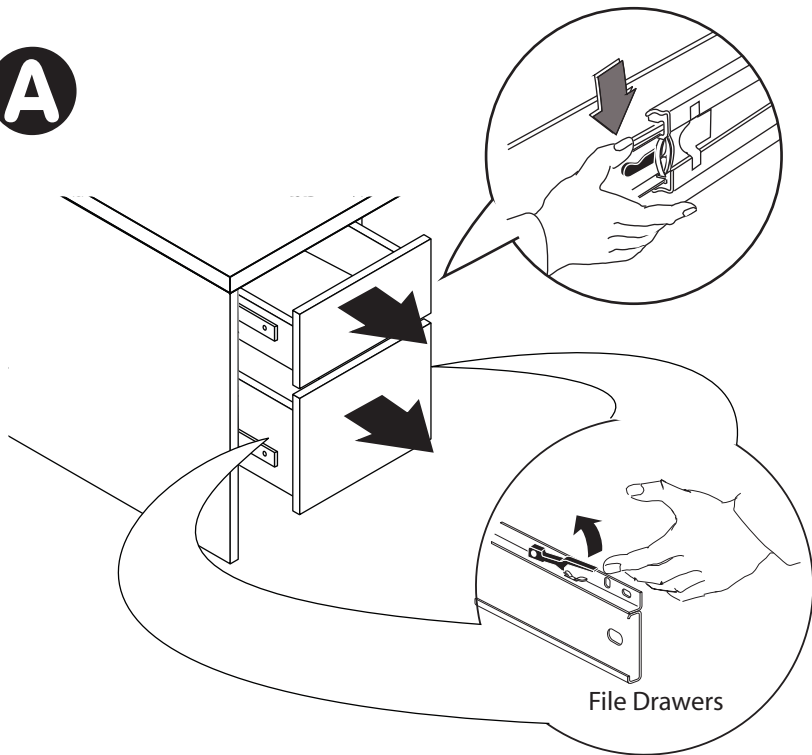
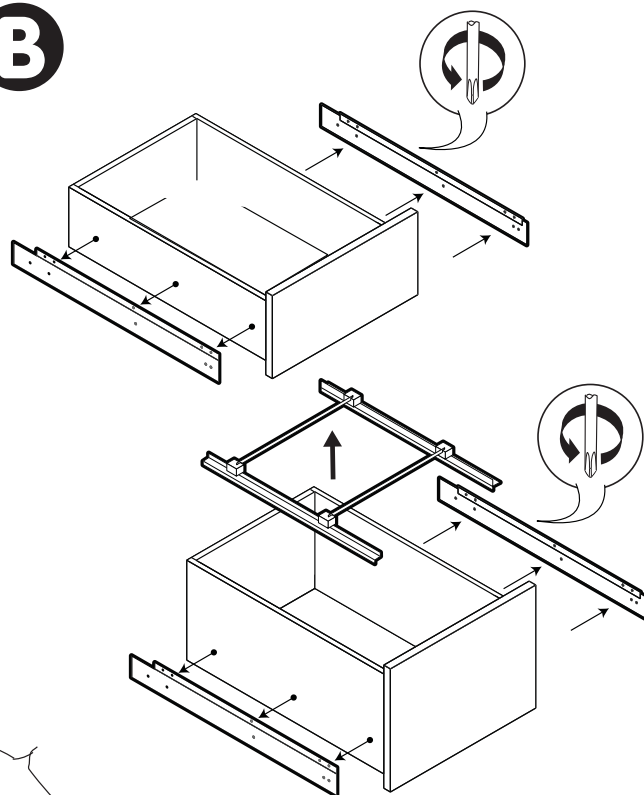
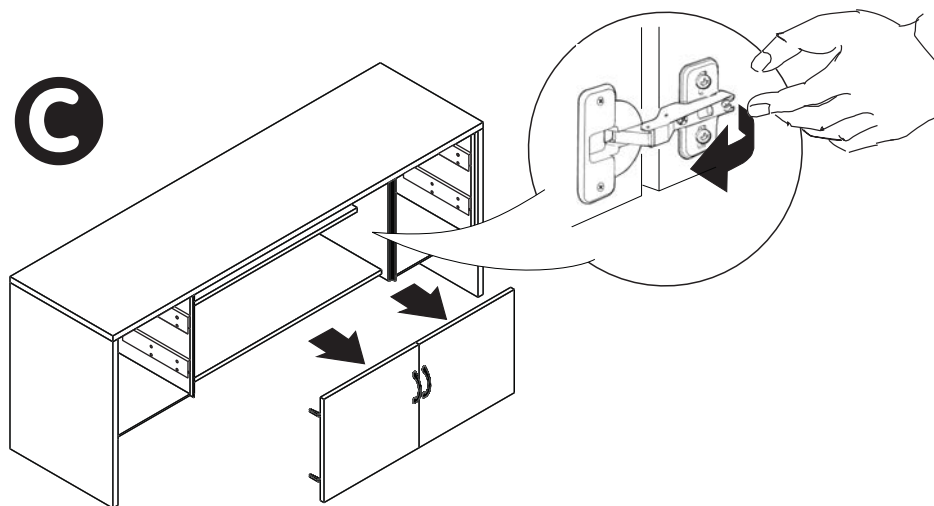
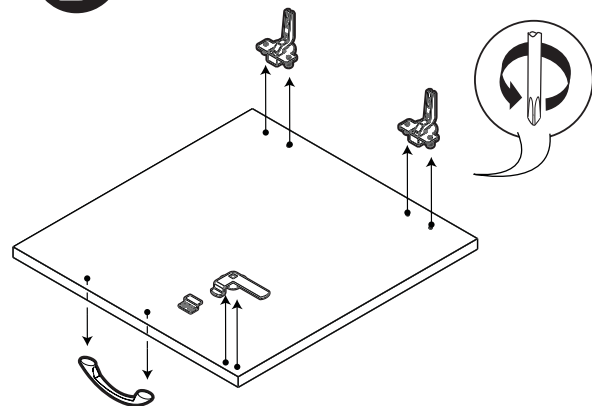
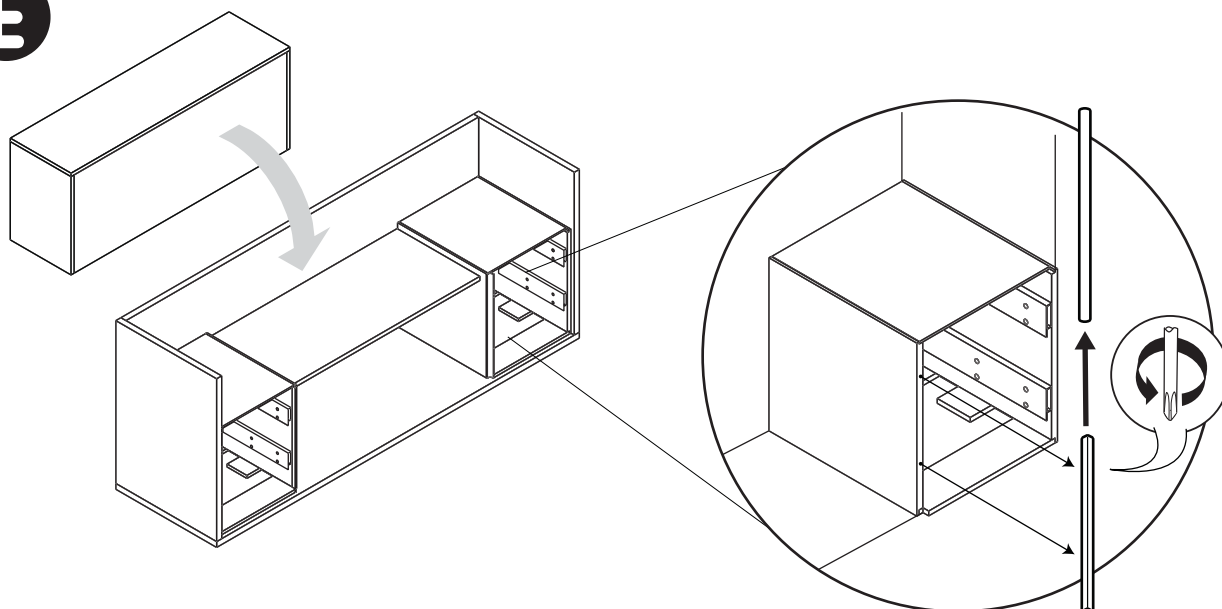
- Remove Drawers by Fully Extending and Disengaging latch on each slide while pulling drawer out.
- On Drawer boxes, unscrew and remove slide channels. Remove hanging file system.
- Remove door by pressing on back of hinges and pulling doors forward.
- Unscrew and remove hinges, handles and door lock mechanism from doors.
- Turn unit upside down, slide PVC cover on front edge extrusion off exposing screws. Remove screws using a Robertson screwdriver. Pull extrusion off extrusion.
- Unscrew and remove corner brackets, door stopper and screws.
- Unscrew and remove glide channels and drawer lock mechanism.
- Unscrew and remove leveler.

ITEM	DESCRIPTION	QTY	MATERIAL
1	TOP	1	PARTICLEBOARD
2	BACK	1	PARTICLEBOARD
3	SIDE	2	PARTICLEBOARD
4	RIGHT SIDE - PEDESTAL	2	PARTICLEBOARD
5	LEFT SIDE - PEDESTAL	2	PARTICLEBOARD
6	BOTTOM - PEDESTAL	2	PARTICLEBOARD
7	DRAWER	4	MDF
8	DRAWER FRONT	4	PARTICLEBOARD
9	HANGING FILE SYSTEM	2	STEEL/PLASTIC
10	DOOR	2	PARTICLEBOARD
11	DOOR LOCK MECHANISM	2	STEEL/PLASTIC
12	HANDLES	2	ALUMINIUM
13	HINGES	4	STEEL
14	PVC EDGE EXTRUSION W/ SLIDE CHANNEL	2	PLASTIC
15	SHELF	2	PARTICLEBOARD
16	CORNER BRACKET	16	STEEL
17	SLIDES (INNER)	8	STEEL
18	SLIDES (BASE PLATE)	8	STEEL
19	LEVELER	4	STEEL/PLASTIC
20	SCREWS/BOLTS	188	STEEL
21	LOCKER	2	STEEL
22	DRAWER LOCKER MECHANISM	1	STEEL

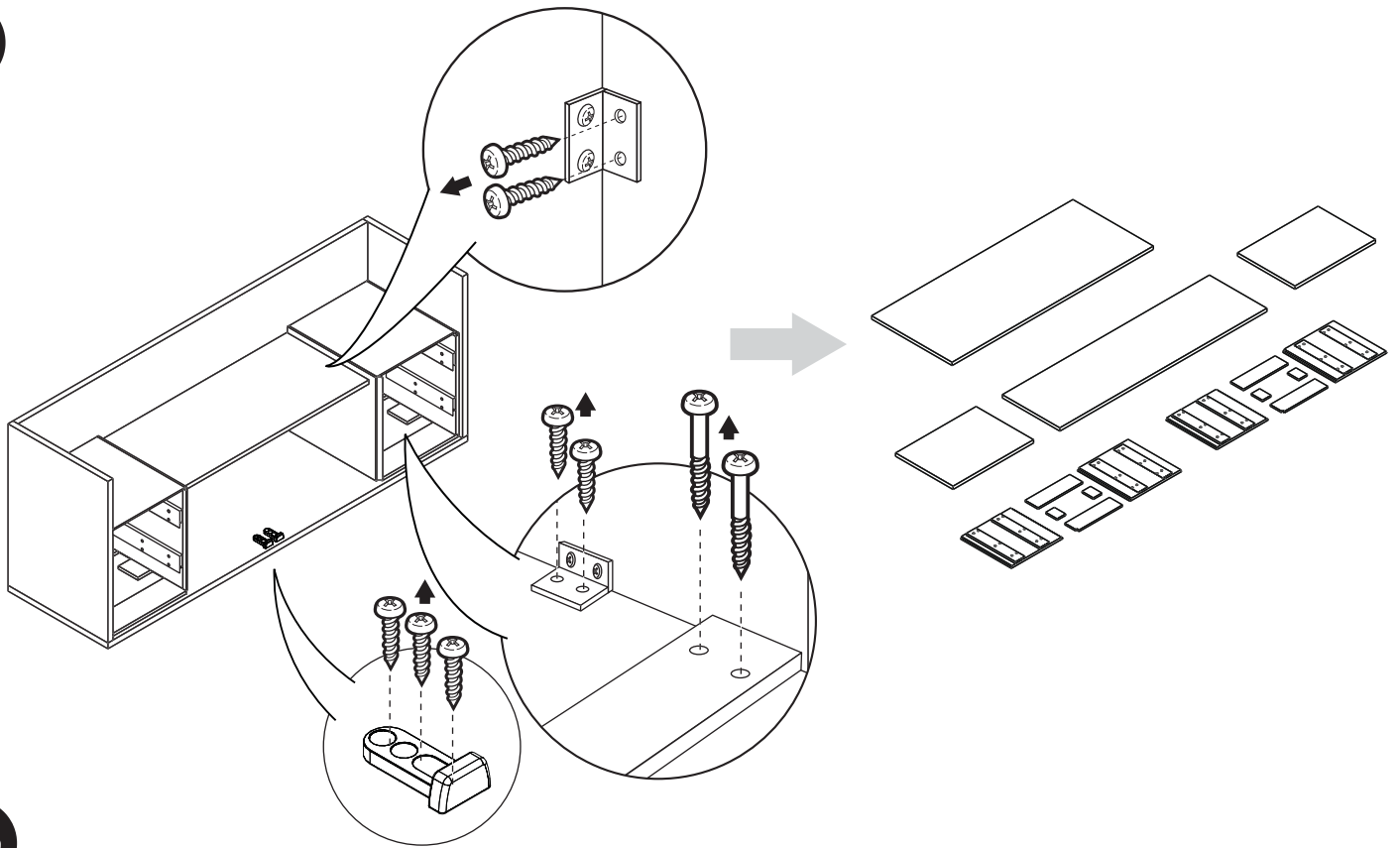
Please contact Global Customer Care at 905-660-5101 for any questions or concerns.

NOTE: Any alterations to listed components will void the manufacturer's warranty. The manufacturer will not be responsible for any damage or bodily harm caused by alterations in accordance with national or local electrical codes and manufacturer's specifications. In accordance with the manufacturer's policy of continual product improvement, the product presented in this document is subject to change without notice or obligation.

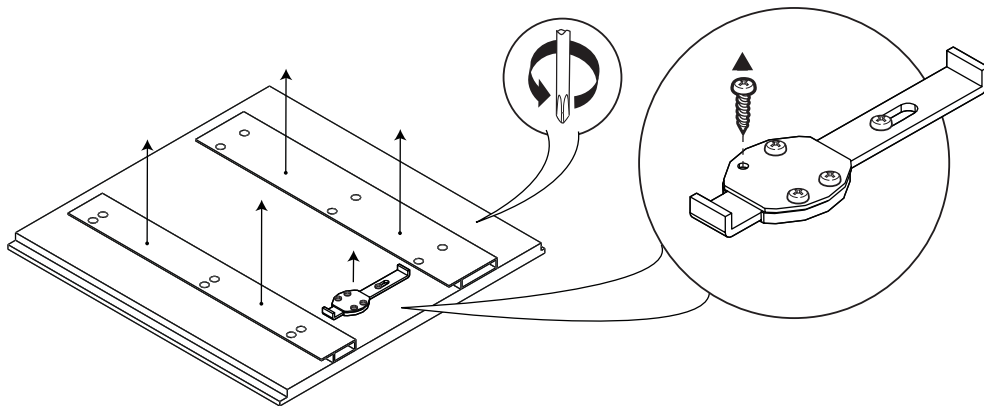
Z-Dis 07 rev: 00

**A****B****C****D****E**

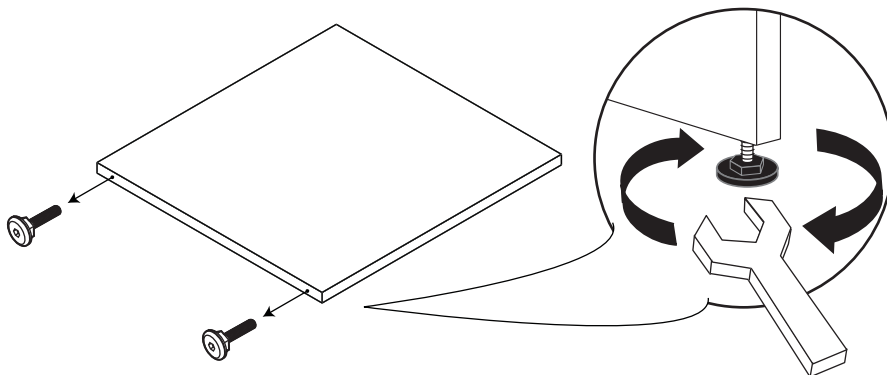
F



G



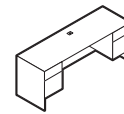
H



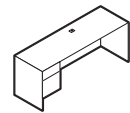


ZIRA

Kneespace Credenza &  
Single Pedestal



Z2472CK  
Z2466CK  
Z2072CK  
Z2066CK  
Z2060CK



Z2472CS L/R  
Z2466CS L/R  
Z2072CS L/R  
Z2066CS L/R  
Z2060CS L/R

## Disassembly Instructions

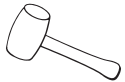
### TOOLS REQUIRED



WRENCH  
Size #16 or 5/8"



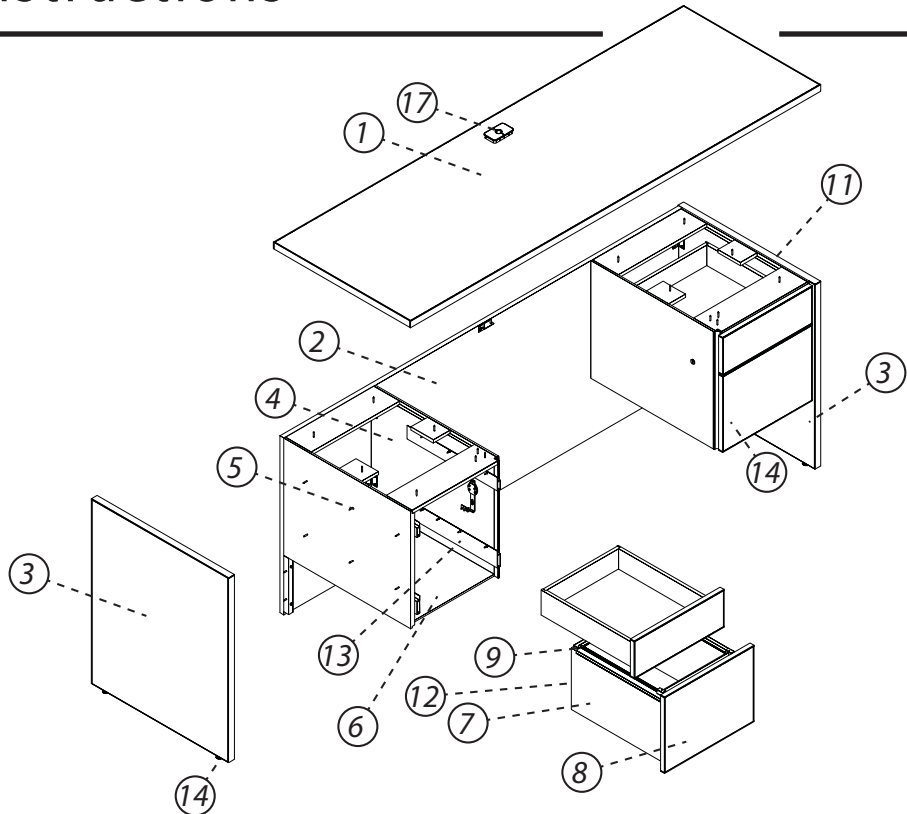
PHILLIPS  
Screwdriver size #2



Rubber Mallet



Safety Glasses



### STEPS

**A** Remove Drawers by Fully Extending and Disengaging latch on each slide while pulling drawer out.

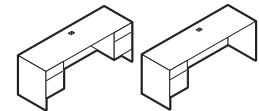
**B** On Drawer boxes, unscrew and remove slide channels. Remove hanging file system.

**C** Turn unit upside down, slide PVC cover on front edge extrusion off exposing screws. Remove screws using a Robertson screwdriver. Pull extrusion off extrusion.

**D** Unscrew and remove corner brackets and screws.

**E** Unscrew and remove glide channels and remove locker.

**F** Unscrew and remove leveler.

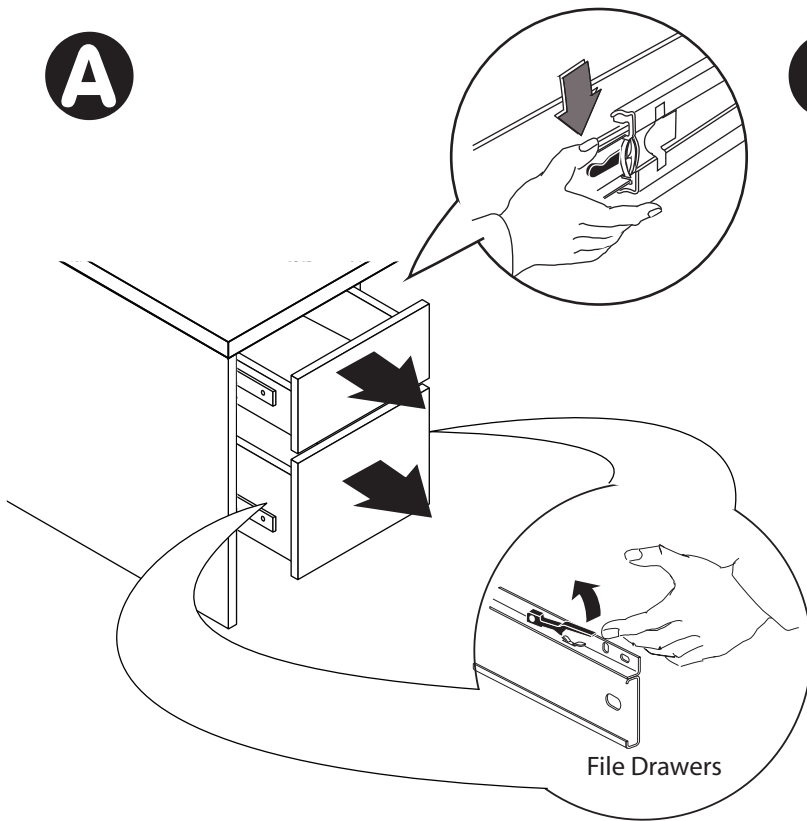
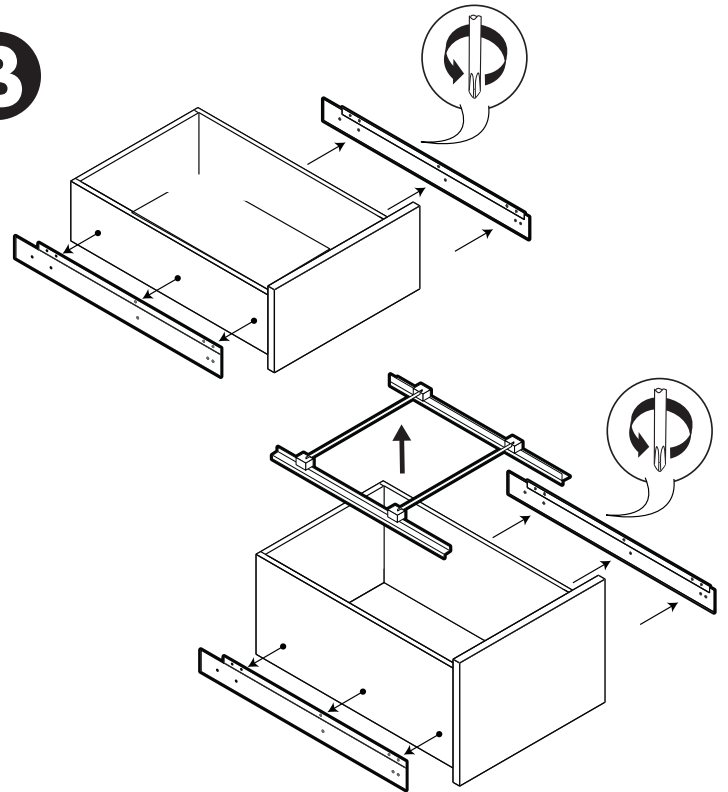
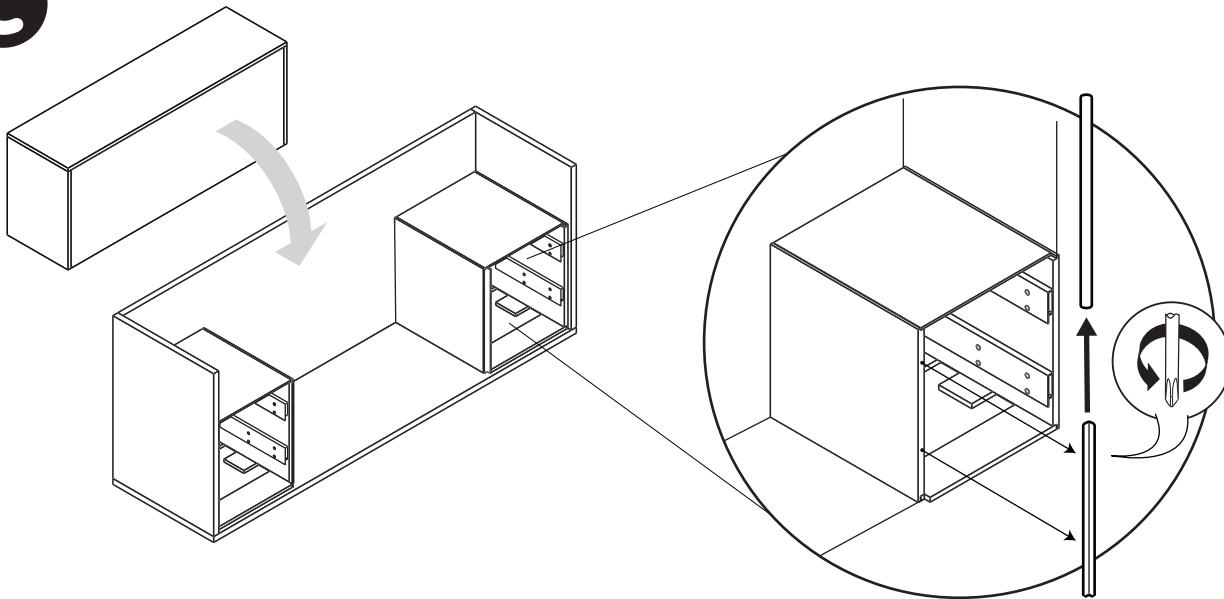


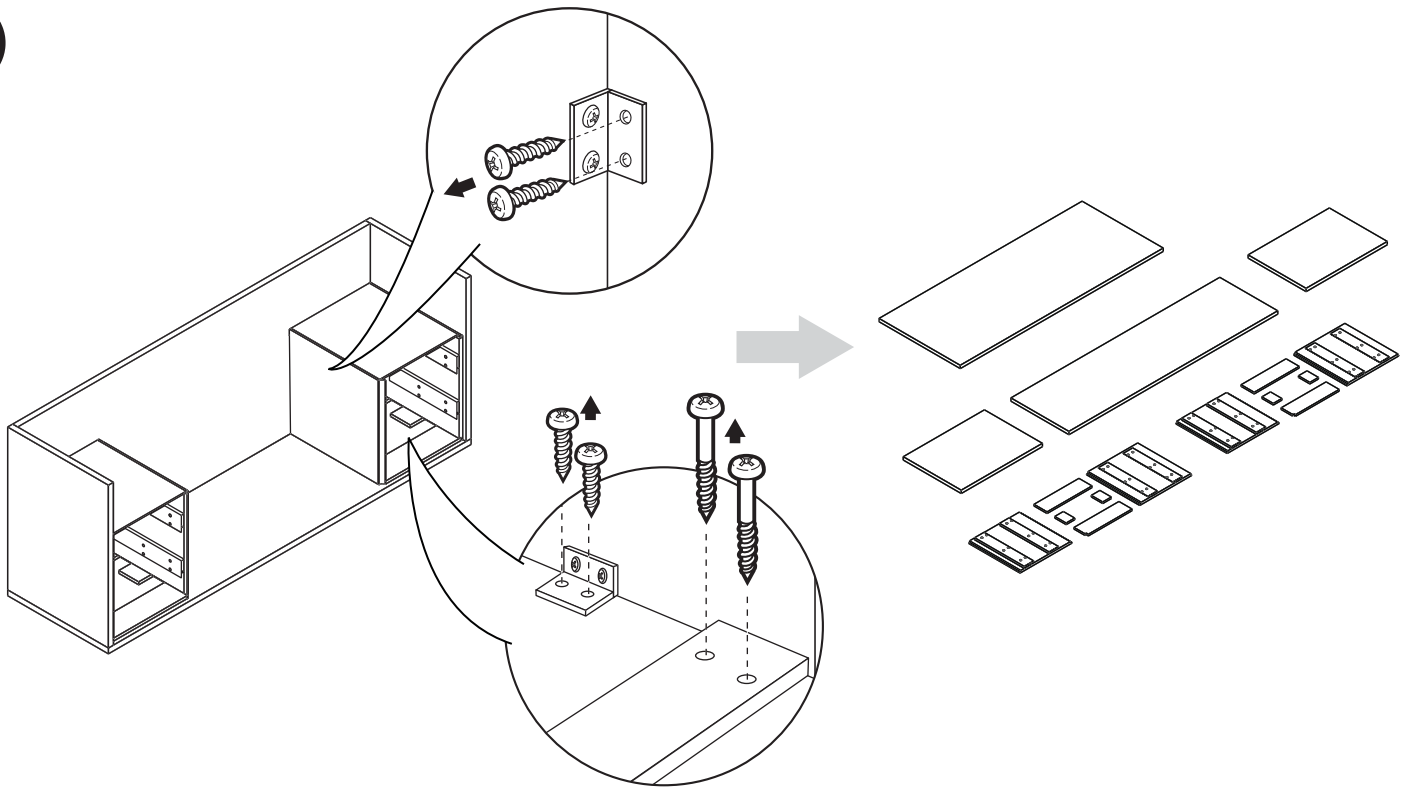
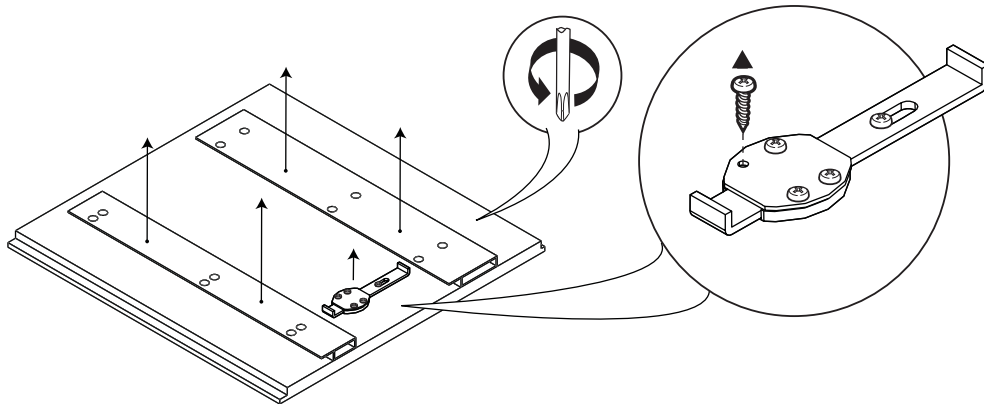
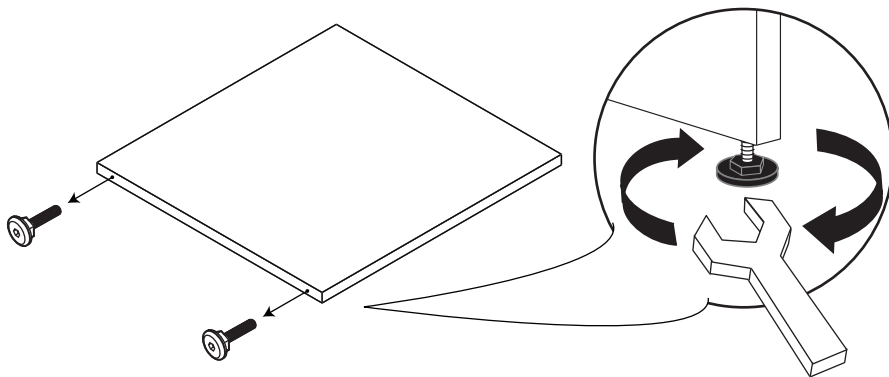
	ITEM	DESCRIPTION	QTY	QTY	MATERIAL
1	TOP		1	1	PARTICLEBOARD
2	BACK		1	1	PARTICLEBOARD
3	SIDE		2	2	PARTICLEBOARD
4	RIGHT SIDE - PEDESTAL		2	1	PARTICLEBOARD
5	LEFT SIDE - PEDESTAL		2	1	PARTICLEBOARD
6	BOTTOM - PEDESTAL		2	1	PARTICLEBOARD
7	DRAWER		4	2	MDF
8	DRAWER FRONT		4	2	PARTICLEBOARD
9	HANGING FILE SYSTEM		2	1	STEEL/PLASTIC
10	PVC EDGE EXTRUSION W/ SLIDE CHANNEL		2	1	PLASTIC
11	CORNER BRACKET		11	9	STEEL
12	SLIDES		8	4	STEEL
13	GLIDES		8	4	STEEL
14	LEVELER		4	4	STEEL/PLASTIC
15	SCREWS		150	97	STEEL
16	LOCKER		2	1	STEEL
17	GROMMET		1	1	PLASTIC

Please contact Global Customer Care at 905-660-5101 for any questions or concerns.

NOTE: Any alterations to listed components will void the manufacturer's warranty. The manufacturer will not be responsible for any damage or bodily harm caused by alterations in accordance with national or local electrical codes and manufacturer's specifications. In accordance with the manufacturer's policy of continual product improvement, the product presented in this document is subject to change without notice or obligation.

Z-Dis 08 rev: 00

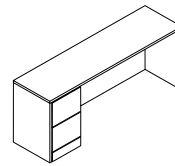
**A****B****C**

**D****E****F**



ZIRA

Full to Floor Single Pedestal Credenza - File/File



Z2472CS2 L/R  
Z2466CS2 L/R  
Z2072CS2 L/R  
Z2066CS2 L/R

## Disassembly Instructions

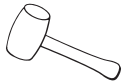
### TOOLS REQUIRED



WRENCH  
Size #16 or 5/8"



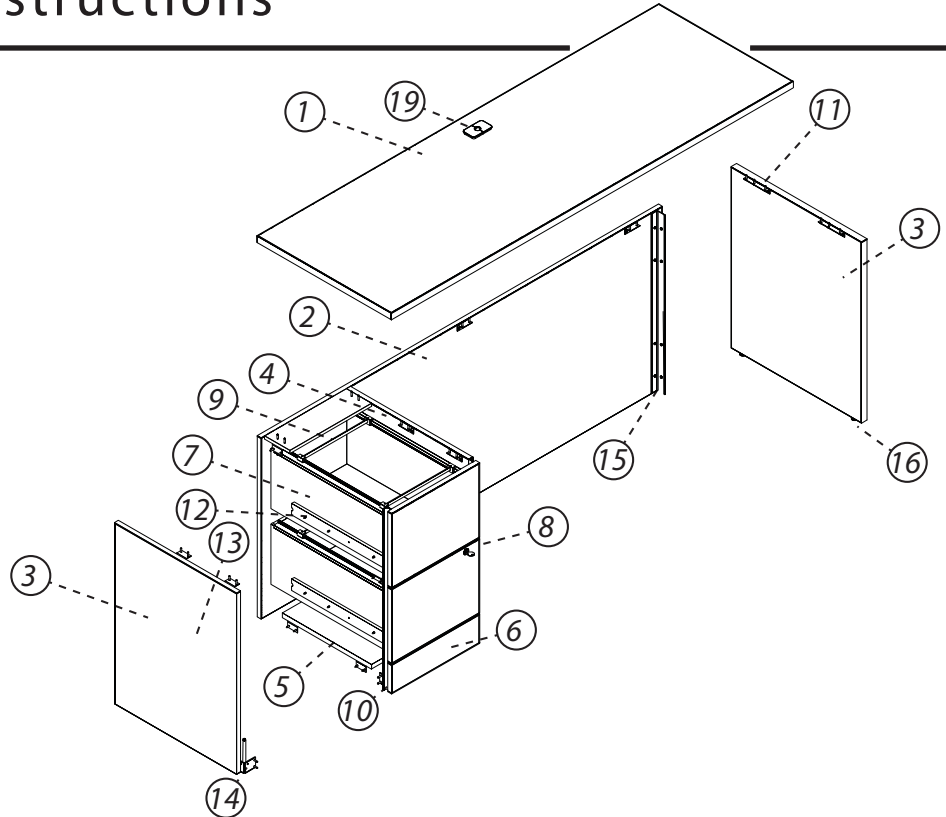
PHILLIPS  
Screwdriver size #2



Rubber Mallet



Safety Glasses



### STEPS

**A** Remove Drawers by Fully Extending and Disengaging latch on each slide while pulling drawer out.

**B** On Drawer boxes, unscrew and remove slide channels, handles and door lock mechanism . Remove hanging file system.

**C** Turn unit upside down, slide PVC cover on front edge extrusion off exposing screws. Remove screws using a Robertson screwdriver. Pull extrusion off extrusion. Unscrew and remove pedestal bottom and "C" shape metal.

**D** Unscrew and remove corner brackets. Pull over aluminium cleat cover. Unscrew screws and remove aluminium cleat.

**E** Unscrew and remove glide channels.

**F** Unscrew and remove leveler.

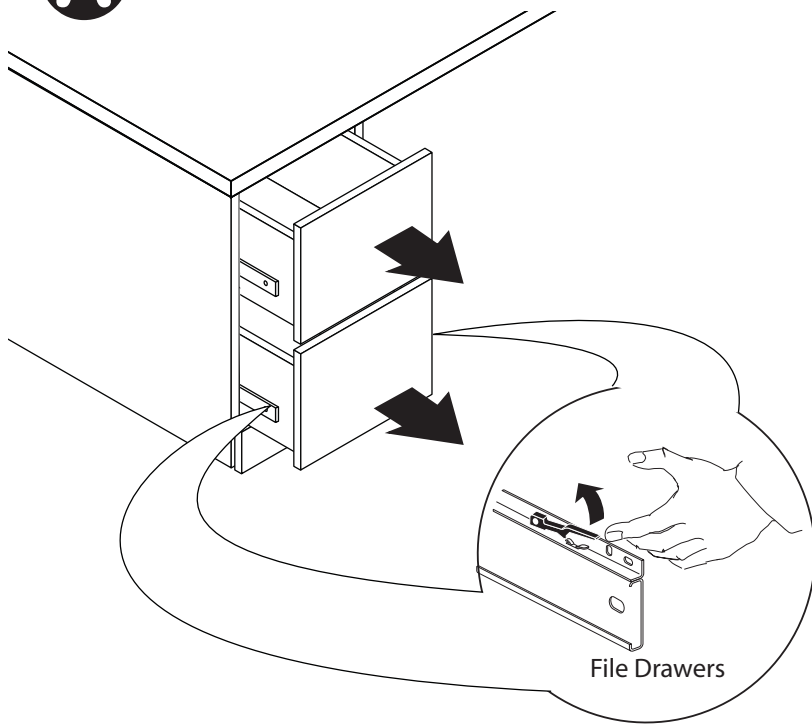
ITEM	DESCRIPTION	QTY	MATERIAL
1	TOP	1	PARTICLEBOARD
2	BACK	1	PARTICLEBOARD
3	SIDE	2	PARTICLEBOARD
4	RIGHT SIDE - PEDESTAL	1	PARTICLEBOARD
5	BOTTOM - PEDESTAL	1	PARTICLEBOARD
6	KICKBASE - PEDESTAL	1	PARTICLEBOARD
7	DRAWER	2	MDF
8	DRAWER FRONT	2	PARTICLEBOARD
9	HANGING FILE SYSTEM	2	STEEL/PLASTIC
10	PVC EDGE EXTRUSION W/ SLIDE CHANNEL	2	PLASTIC
11	CORNER BRACKET	18	STEEL
12	SLIDES (INNER)	4	STEEL
13	SLIDES (BASE PLATE)	4	STEEL
14	CORNER BRACKET W/LEVELER	4	STEEL
15	ALUMINIUM CLEAT AND COVER	1	ALUMINIUM/PVC
16	LEVELER	2	STEEL
17	SCREWS	152	STEEL
18	LOCKER	1	STEEL/PLASTIC
19	GROMMET	1	PLASTIC

Please contact Global Customer Care at 905-660-5101 for any questions or concerns.

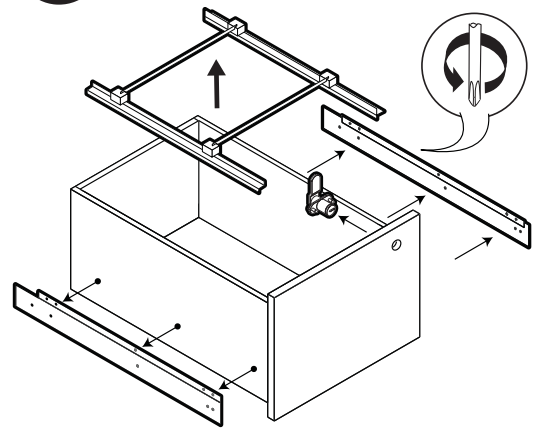
NOTE: Any alterations to listed components will void the manufacturer's warranty. The manufacturer will not be responsible for any damage or bodily harm caused by alterations in accordance with national or local electrical codes and manufacturer's specifications. In accordance with the manufacturer's policy of continual product improvement, the product presented in this document is subject to change without notice or obligation.

Z-Dis 09 rev: 00

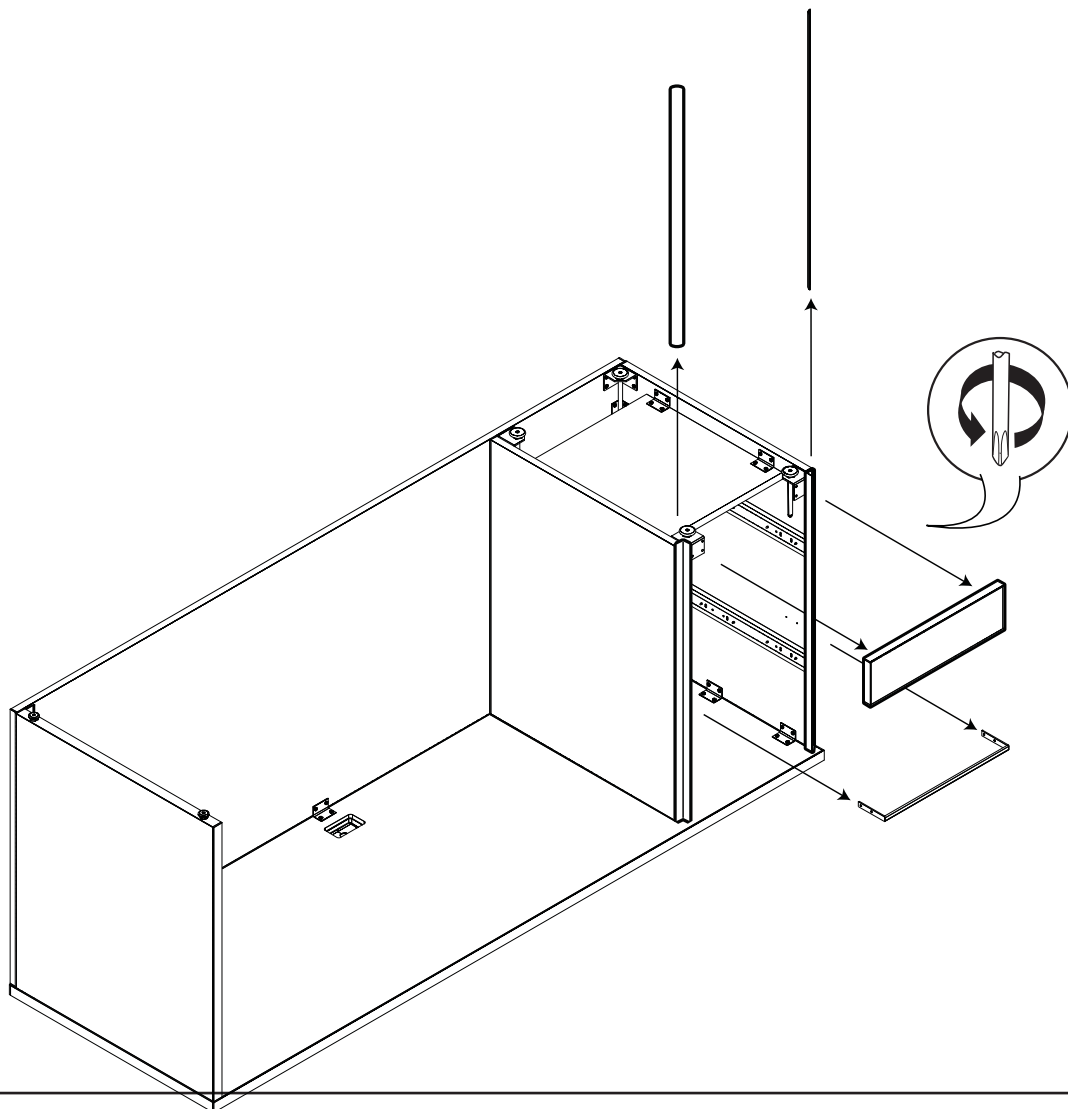
**A**



**B**

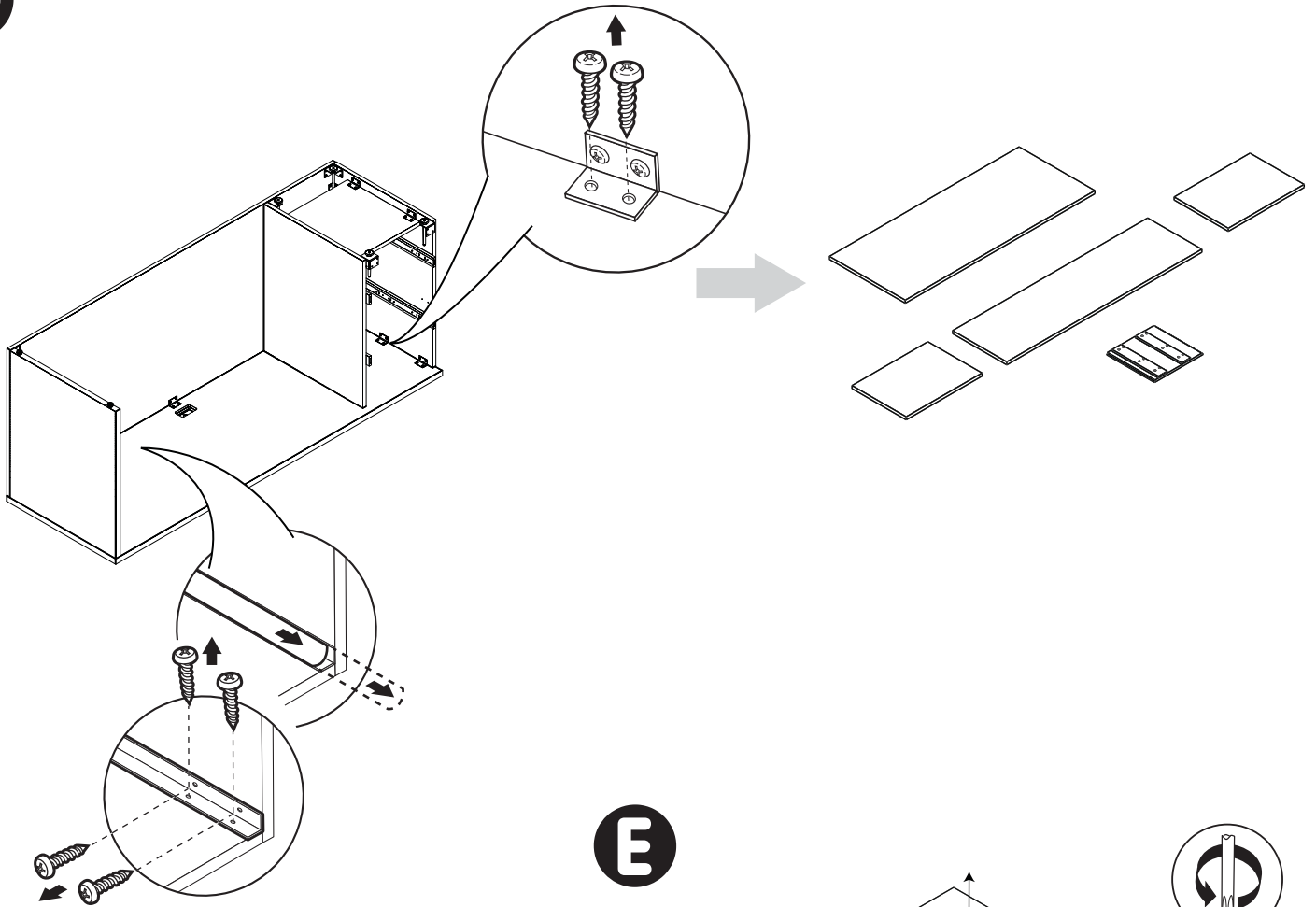


**C**

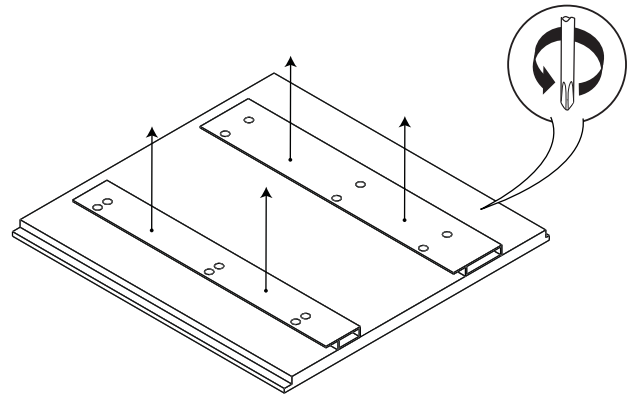




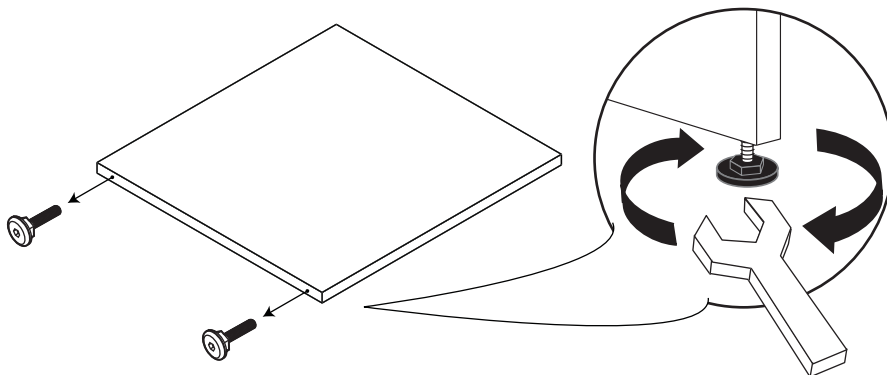
**D**



**E**



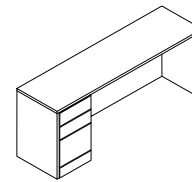
**F**





ZIRA

Full to Floor Single Pedestal Credenza - Box/Box/File



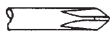
Z2472CS4 L/R  
Z2466CS4 L/R  
Z2072CS4 L/R  
Z2066CS4 L/R

## Disassembly Instructions

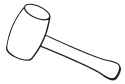
### TOOLS REQUIRED



WRENCH  
Size #16 or 5/8"



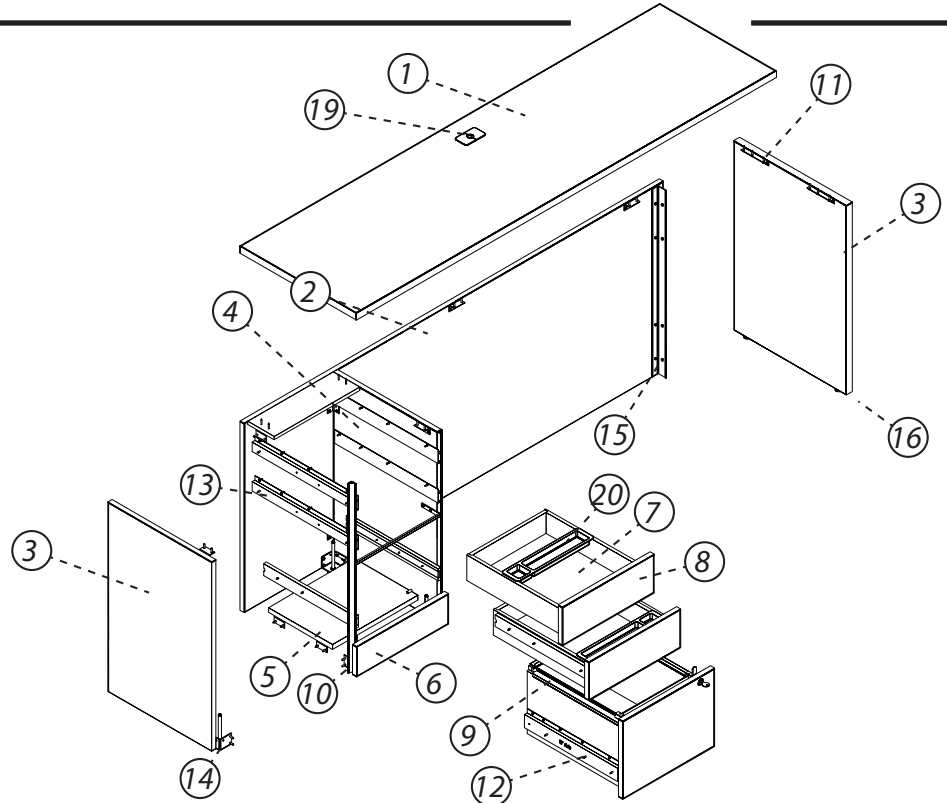
PHILLIPS  
Screwdriver size #2



Rubber Mallet



Safety Glasses



### STEPS

**A** Remove Drawers by Fully Extending and Disengaging latch on each slide while pulling drawer out.

**B** On Drawer boxes, unscrew and remove slide channels, handles and door lock mechanism. Remove hanging file system.

**C** Turn unit upside down, slide PVC cover on front edge extrusion off exposing screws. Remove screws using a Robertson screwdriver. Pull extrusion off extrusion. Unscrew and remove pedestal bottom and "C" shape metal.

**D** Unscrew and remove corner brackets. Pull over aluminium cleat cover. Unscrew screws and remove aluminium cleat.

**E** Unscrew and remove glide channels.

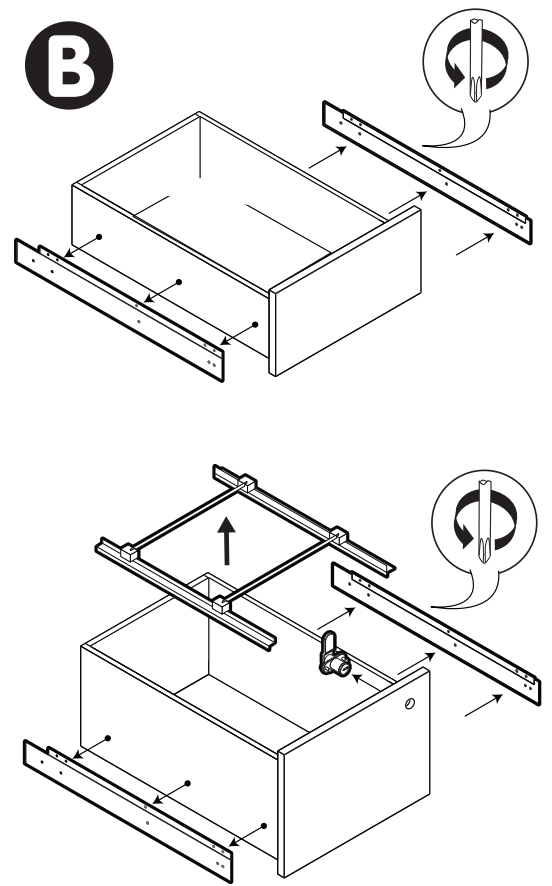
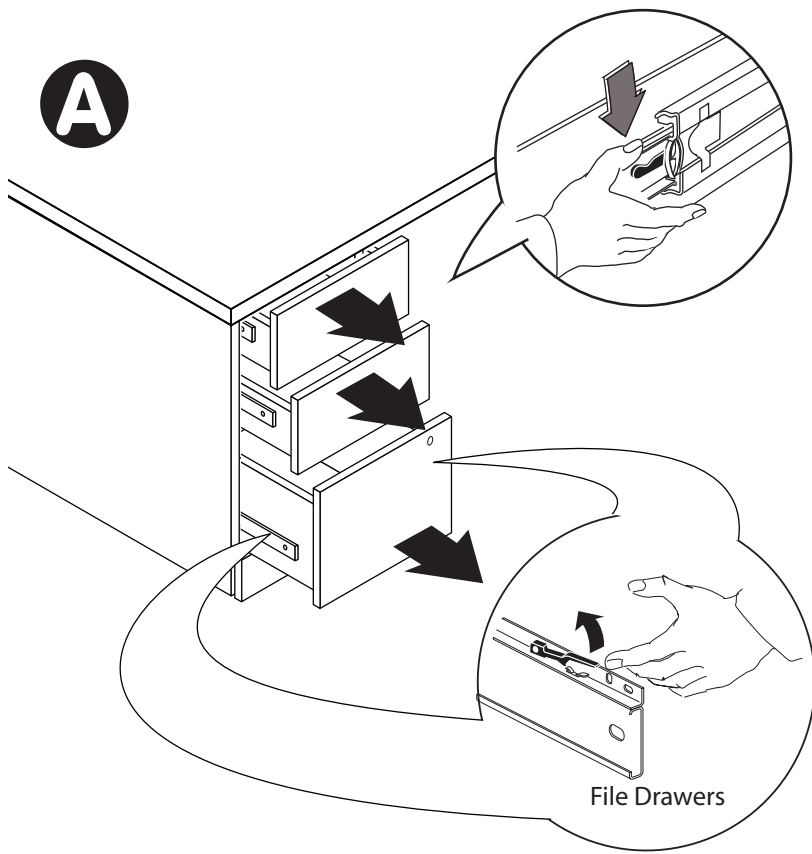
**F** Unscrew and remove leveler.

ITEM	DESCRIPTION	QTY	MATERIAL
1	TOP	1	PARTICLEBOARD
2	BACK	1	PARTICLEBOARD
3	SIDE	2	PARTICLEBOARD
4	RIGHT SIDE - PEDESTAL	1	PARTICLEBOARD
5	BOTTOM - PEDESTAL	1	PARTICLEBOARD
6	KICKBASE - PEDESTAL	1	PARTICLEBOARD
7	DRAWER	2	MDF
8	DRAWER FRONT	2	PARTICLEBOARD
9	HANGING FILE SYSTEM	2	STEEL/PLASTIC
10	PVC EDGE EXTRUSION W/ SLIDE CHANNEL	2	PLASTIC
11	CORNER BRACKET	18	STEEL
12	SLIDES (INNER)	6	STEEL
13	SLIDES (BASE PLATE)	6	STEEL
14	CORNER BRACKET W/LEVELER	4	STEEL
15	ALUMINIUM CLEAT AND COVER	1	ALUMINIUM/PVC
16	LEVELER	2	STEEL/PLASTIC
17	SCREWS	160	STEEL
18	LOCKER	1	STEEL
19	GROMMET	1	PLASTIC
20	PENCIL TRAY	1	PLASTIC

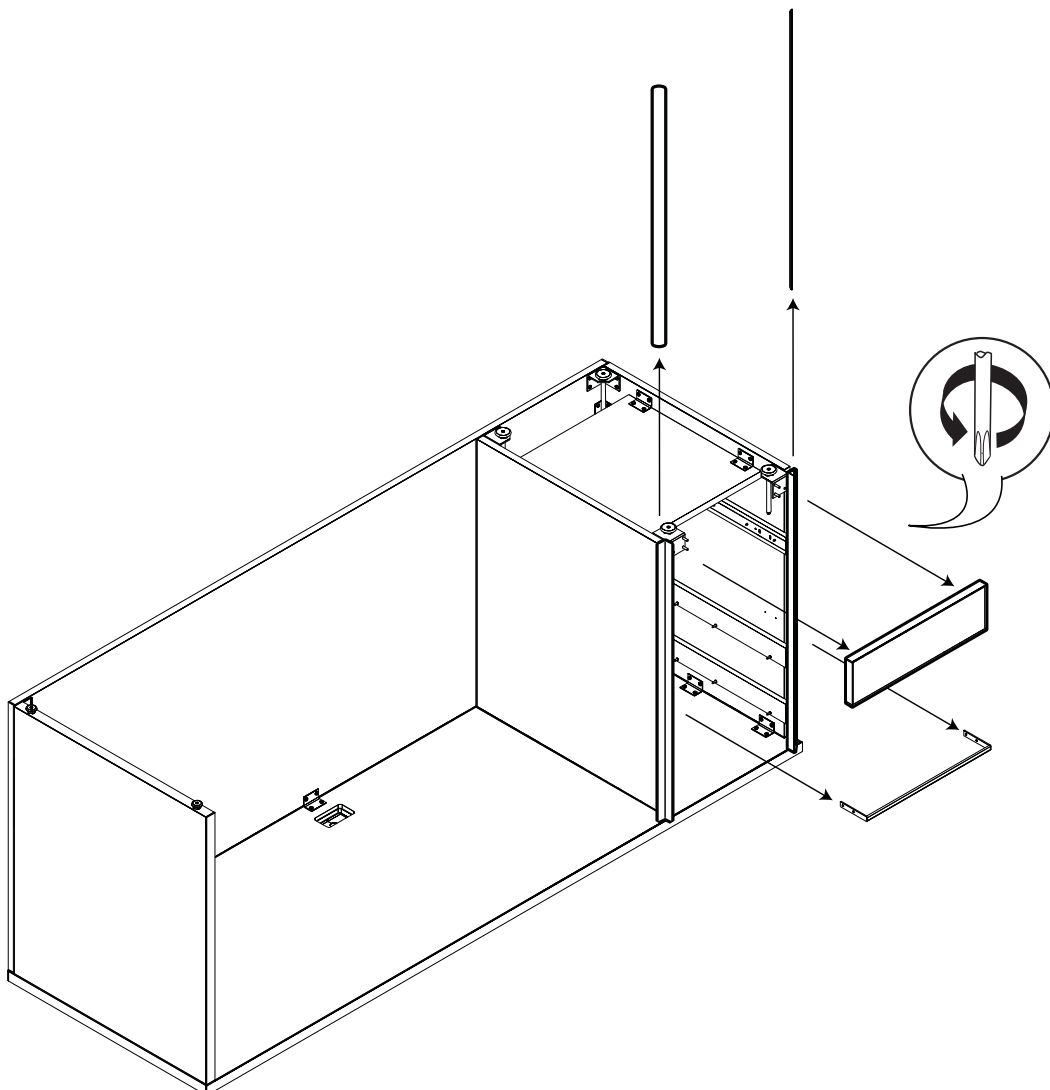
Please contact Global Customer Care at 905-660-5101 for any questions or concerns.

NOTE: Any alterations to listed components will void the manufacturer's warranty. The manufacturer will not be responsible for any damage or bodily harm caused by alterations in accordance with national or local electrical codes and manufacturer's specifications. In accordance with the manufacturer's policy of continual product improvement, the product presented in this document is subject to change without notice or obligation.

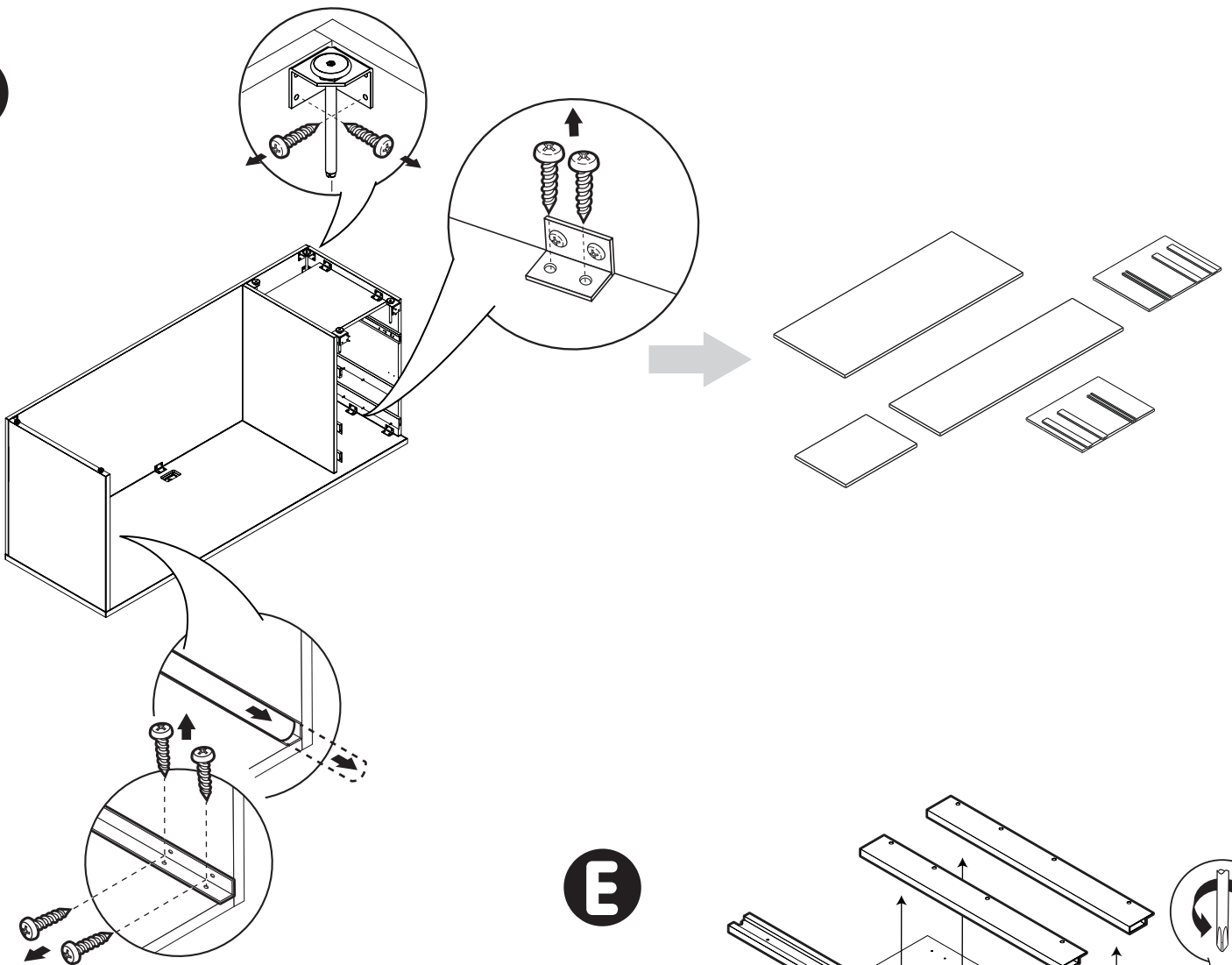
Z-Dis 10 rev: 00



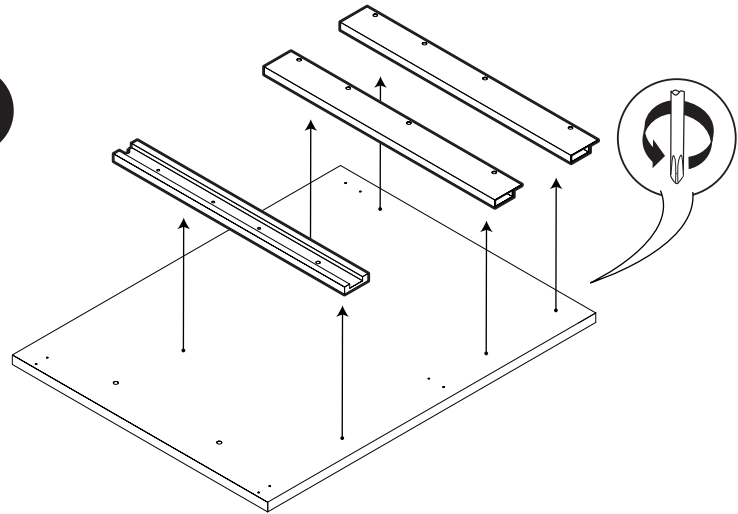
**C**



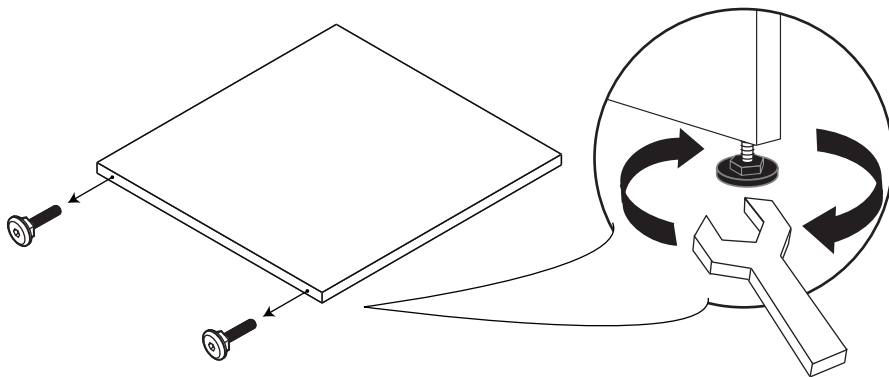
**D**



**E**



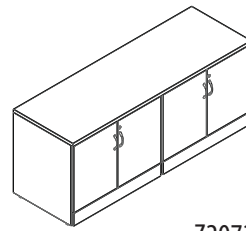
**F**





ZIRA

Storage Cabinet Credenza



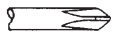
Z2072SCSC  
Z2472SCSC

## Disassembly Instructions

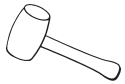
### TOOLS REQUIRED



WRENCH  
Size #16 or 5/8"



PHILLIPS  
Screwdriver size #2



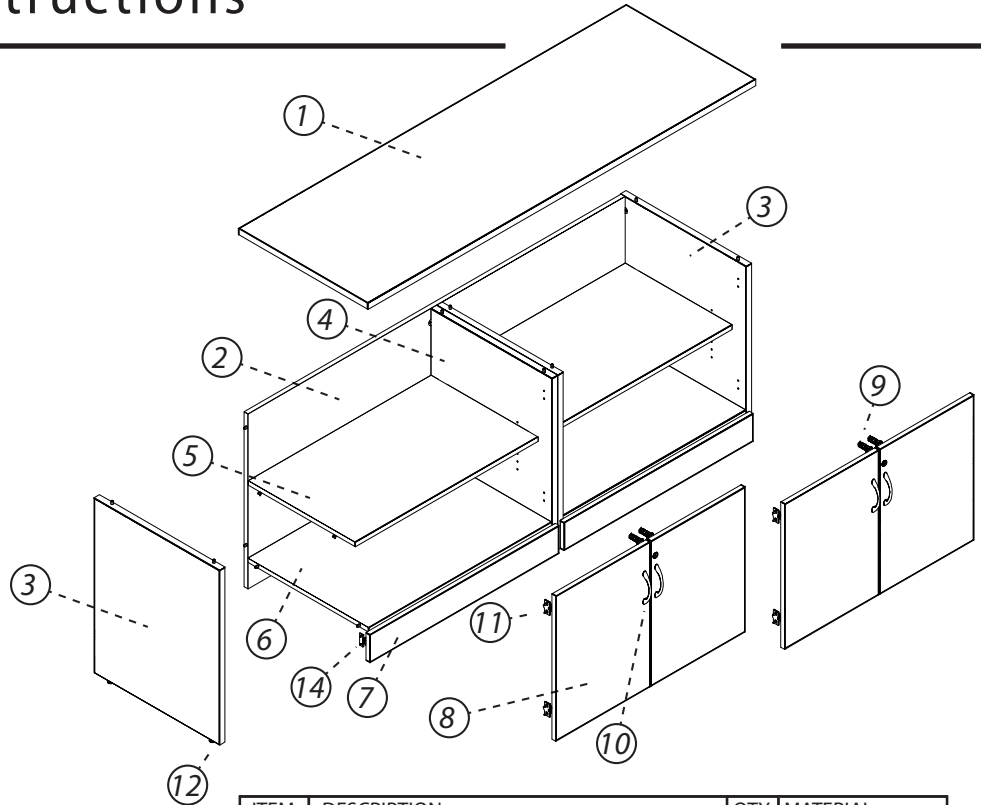
Rubber Mallet



Safety Glasses

### STEPS

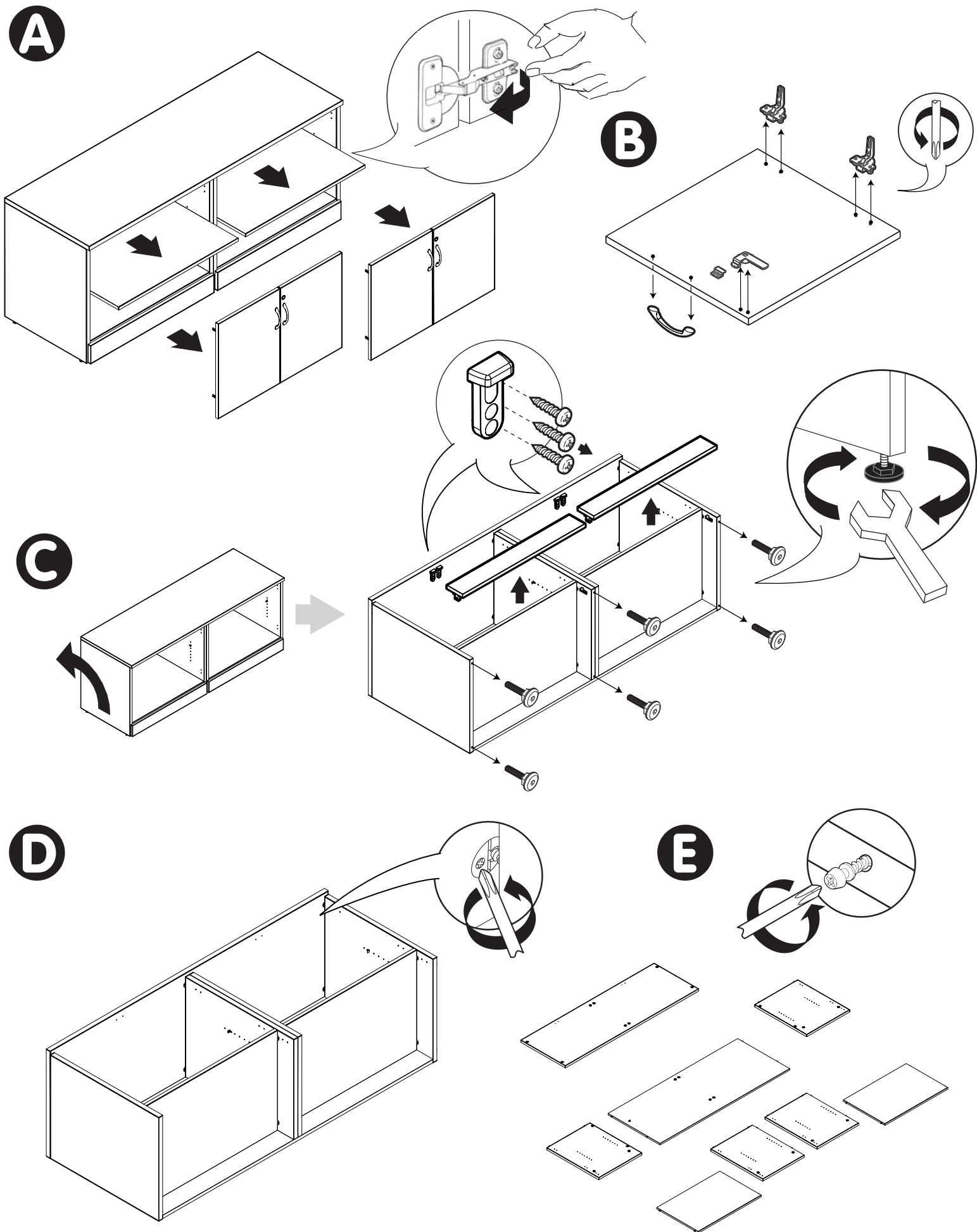
- A** Remove door by pressing on back of hinges and pulling doors forward. Remove shelf.
- B** Unscrew and remove hinges, handles and door lock mechanism from doors.
- C** Turn unit. Pull kickbase and unscrew kick base connector. Unscrew levelers and door stopper.
- D** Untighten Blum Connector.
- E** Unscrew Blum Connector screws



ITEM	DESCRIPTION	QTY	MATERIAL
1	TOP	1	PARTICLEBOARD
2	BACK	1	PARTICLEBOARD
3	SIDE	2	PARTICLEBOARD
4	INSIDE GABLE	2	PARTICLEBOARD
5	SHELF	2	PARTICLEBOARD
6	BOTTOM	2	PARTICLEBOARD
7	KICKBASE	2	PARTICLEBOARD
8	DOOR	4	PARTICLEBOARD
9	DOOR LOCK MECHANISM	2	STEEL/PLASTIC
10	HANDLES	4	ALUMINIUM
11	HINGES	8	STEEL
12	LEVELER	6	STEEL
13	SCREWS	76	STEEL
14	CLIP ON KICK BASE CONNECTOR	4	PLASTIC
15			
16			
17			
18			
19			
20			
21			
22			

Please contact Global Customer Care at 905-660-5101 for any questions or concerns.

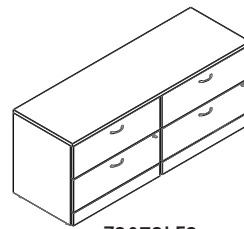
NOTE: Any alterations to listed components will void the manufacturer's warranty. The manufacturer will not be responsible for any damage or bodily harm caused by alterations in accordance with national or local electrical codes and manufacturer's specifications. In accordance with the manufacturer's policy of continual product improvement, the product presented in this document is subject to change without notice or obligation.





ZIRA

Storage Cabinet Credenza



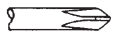
Z2072LF2  
Z2472LF2

## Disassembly Instructions

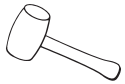
### TOOLS REQUIRED



WRENCH  
Size #16 or 5/8"



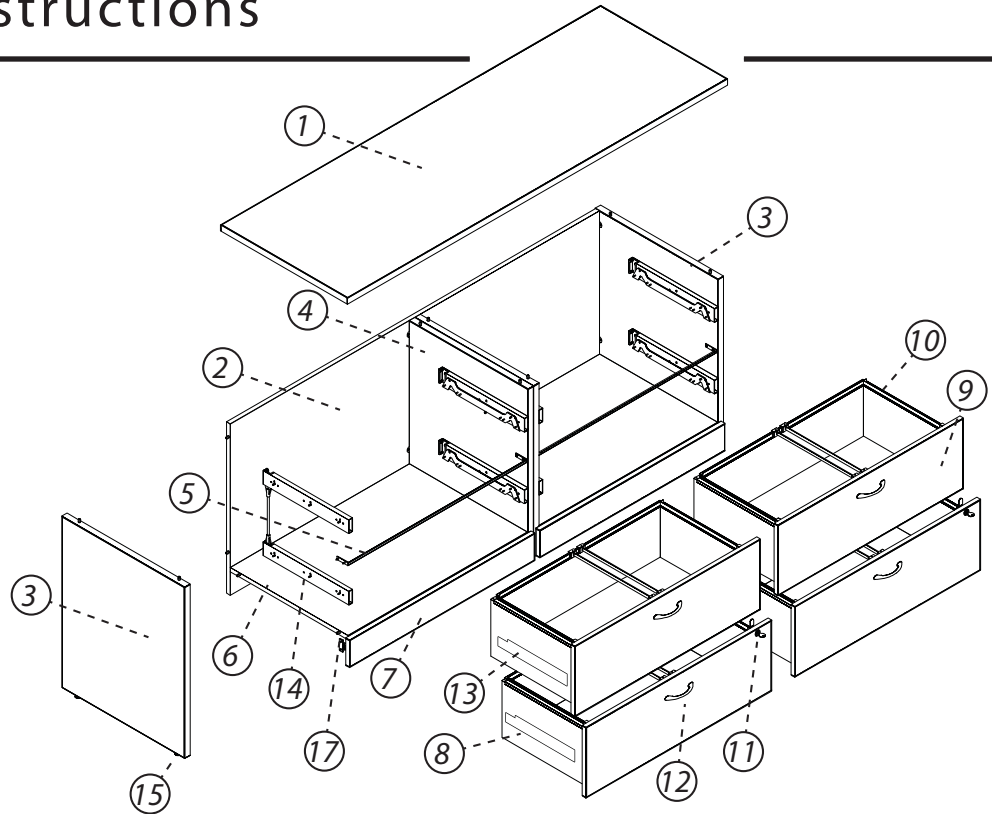
PHILLIPS  
Screwdriver size #2



Rubber Mallet



Safety Glasses



### STEPS

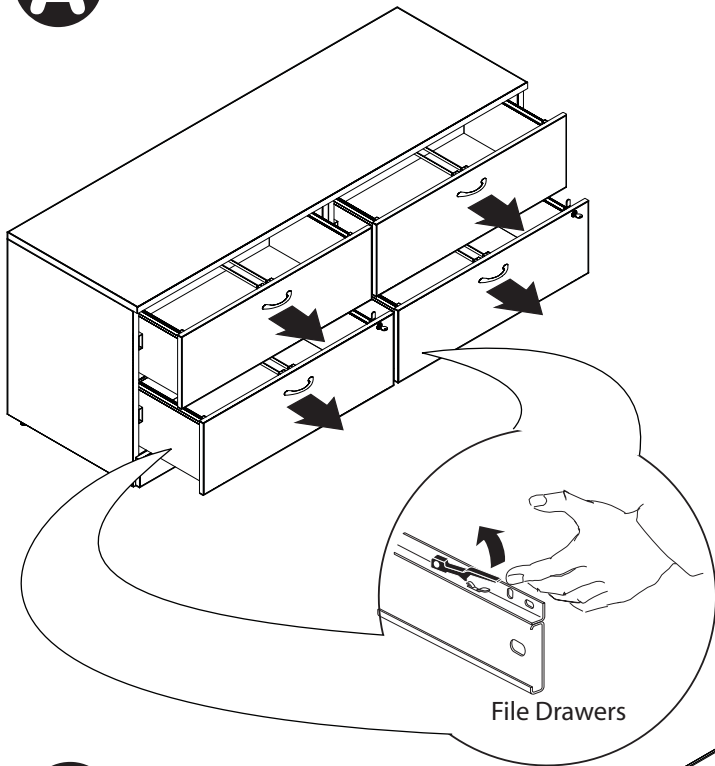
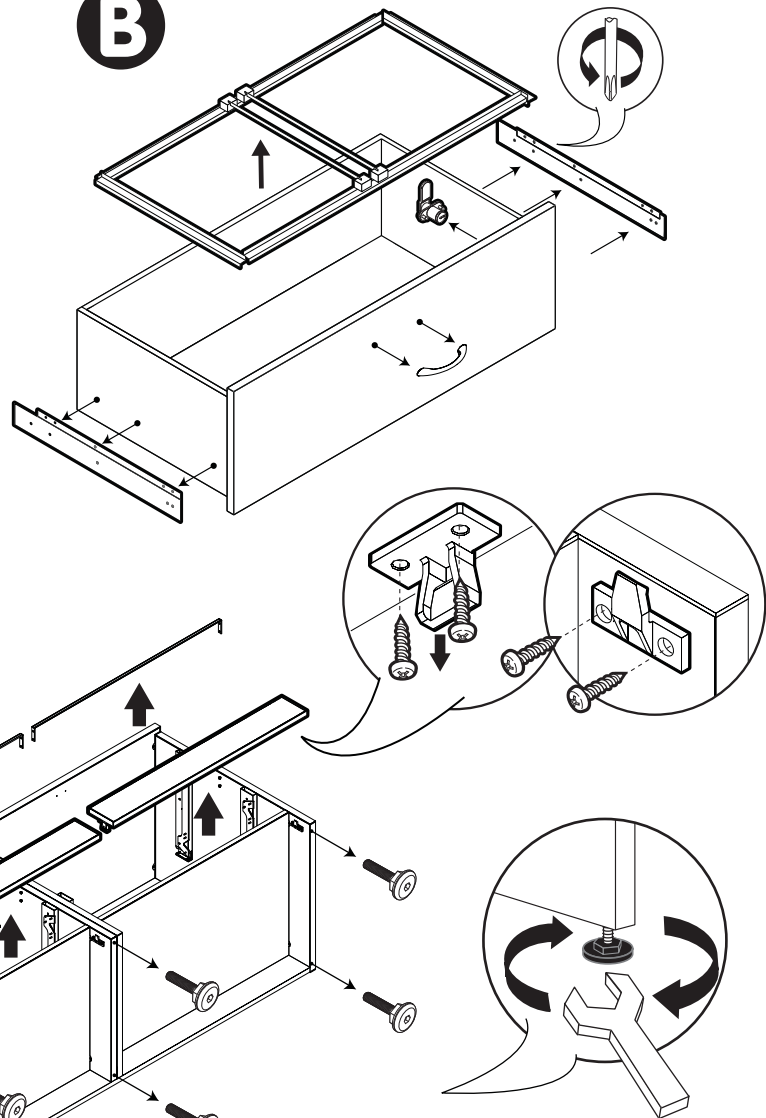
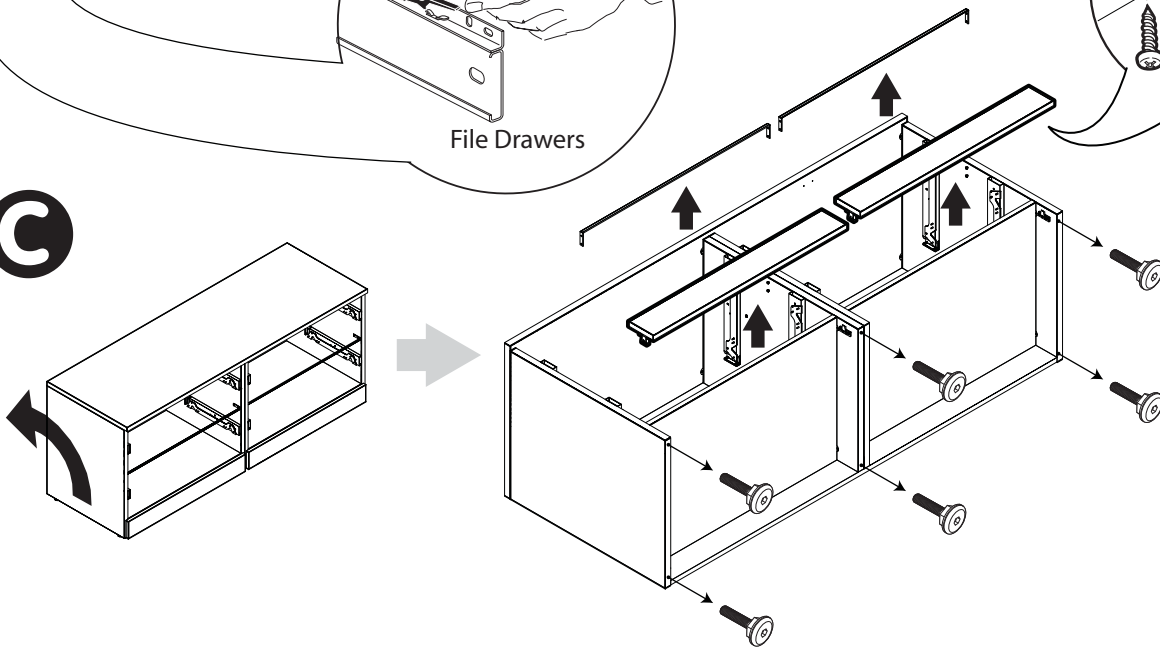
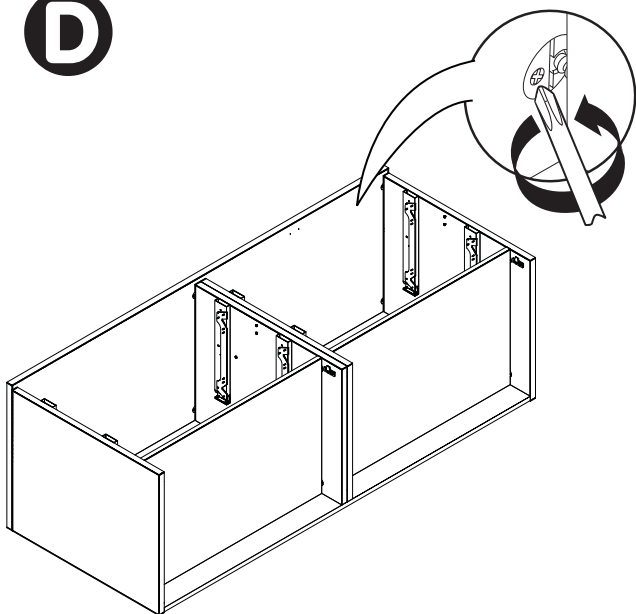
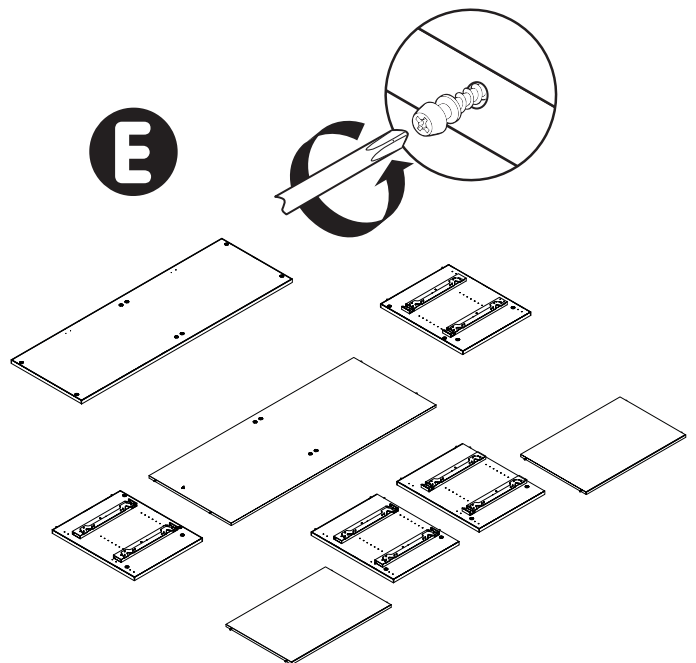
- A** Remove Drawers by Fully Extending and Disengaging latch on each slide while pulling drawer out.
- B** On Drawer boxes, unscrew and remove slide channels, handles and door lock mechanism . Remove hanging file system.
- C** Turn unit. Unscrew and remove "C" shape metal. Pull kickbase and unscrew kick base connector. Unscrew levelers.
- D** Untighten Blum Connector
- E** Unscrew Blum Connector screws
- F** Unscrew and remove glide channels.

ITEM	DESCRIPTION	QTY	MATERIAL
1	TOP	1	PARTICLEBOARD
2	BACK	1	PARTICLEBOARD
3	SIDE	2	PARTICLEBOARD
4	INSIDE GABLE	2	PARTICLEBOARD
5	"C" SHAPE	2	STEEL
6	BOTTOM	2	PARTICLEBOARD
7	KICKBASE	2	PARTICLEBOARD
8	DRAWER	4	MDF
9	DRAWER FRONT	2	PARTICLEBOARD
10	HANGING FILE SYSTEM	4	STEEL/PLASTIC
11	DRAWER LOCK MECHANISM	8	STEEL
12	HANDLES	6	ALUMINIUM
13	SLIDES (INNER)	8	STEEL
14	SLIDES (BASE PLATE)	8	STEEL
15	LEVELER	4	STEEL
16	SCREWS	142	STEEL
17	CLIP ON KICK BASE CONNECTOR	4	PLASTIC
18			
19			
20			
21			
22			

Please contact Global Customer Care at 905-660-5101 for any questions or concerns.

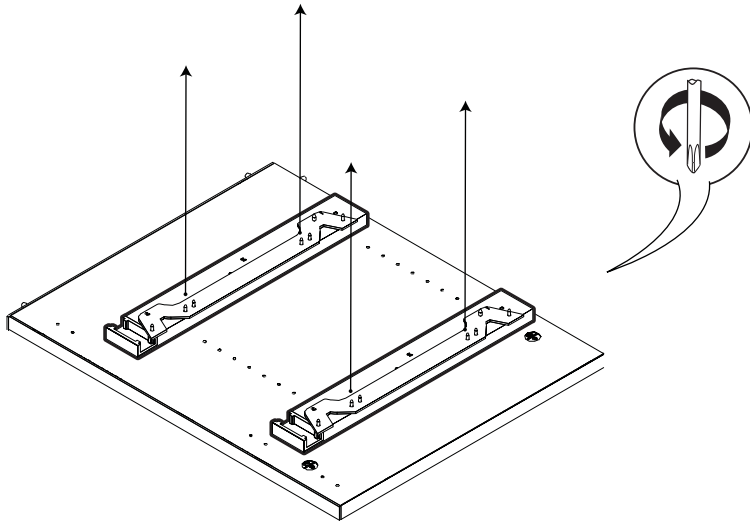
NOTE: Any alterations to listed components will void the manufacturer's warranty. The manufacturer will not be responsible for any damage or bodily harm caused by alterations in accordance with national or local electrical codes and manufacturer's specifications. In accordance with the manufacturer's policy of continual product improvement, the product presented in this document is subject to change without notice or obligation.

Z<sub>Dis</sub> 12 rev: 00

**A****B****C****D****E**



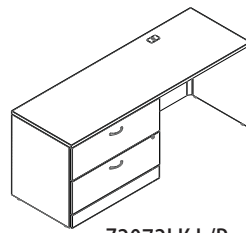
F





ZIRA

Kneespace Lateral File Credenza



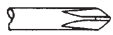
Z2072LK L/R  
Z2472LK L/R

## Disassembly Instructions

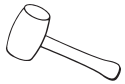
### TOOLS REQUIRED



WRENCH  
size #16 or 5/8"



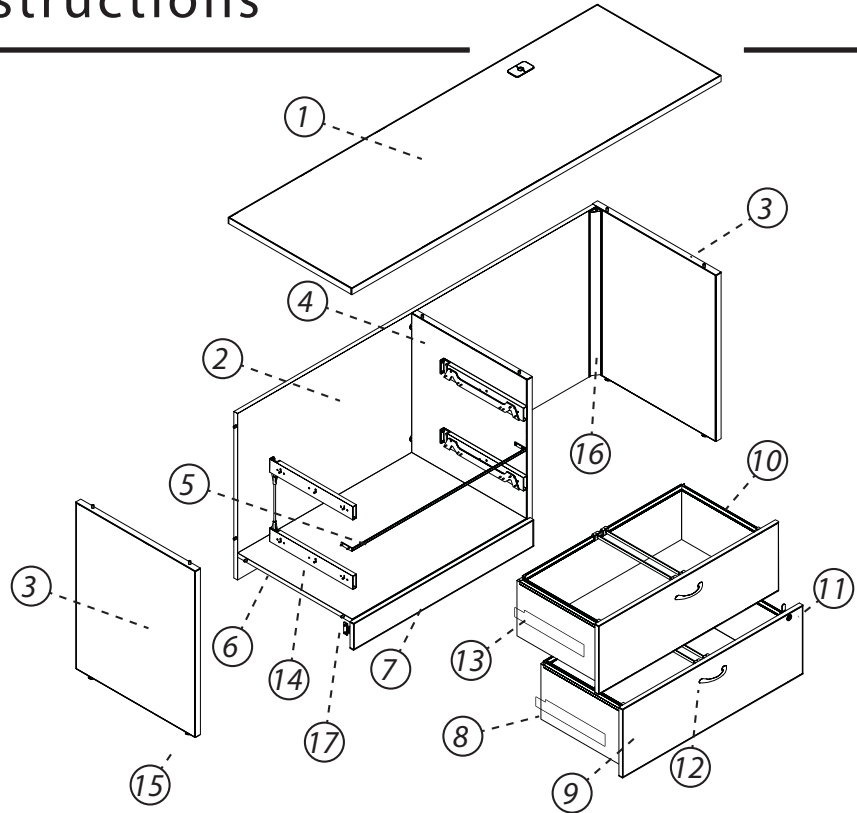
PHILLIPS  
Screwdriver size #2



Rubber Mallet



Safety Glasses



### STEPS

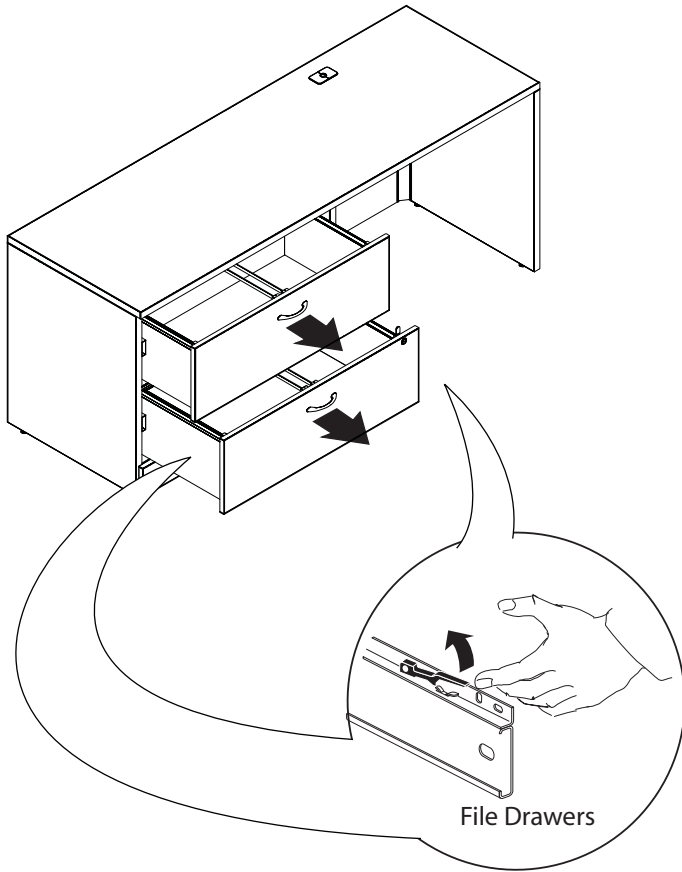
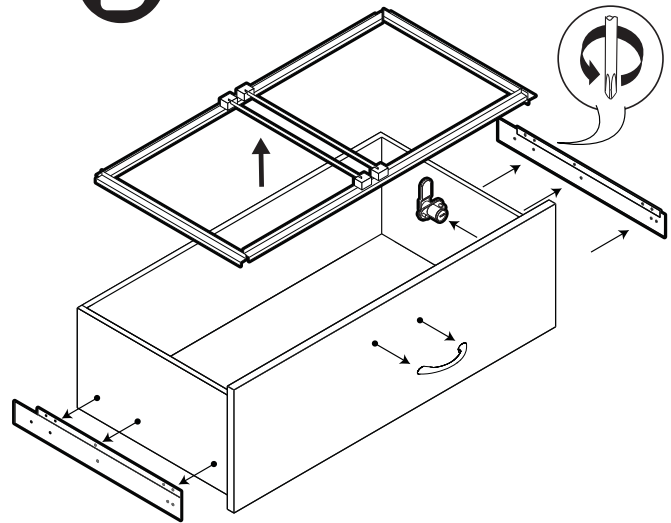
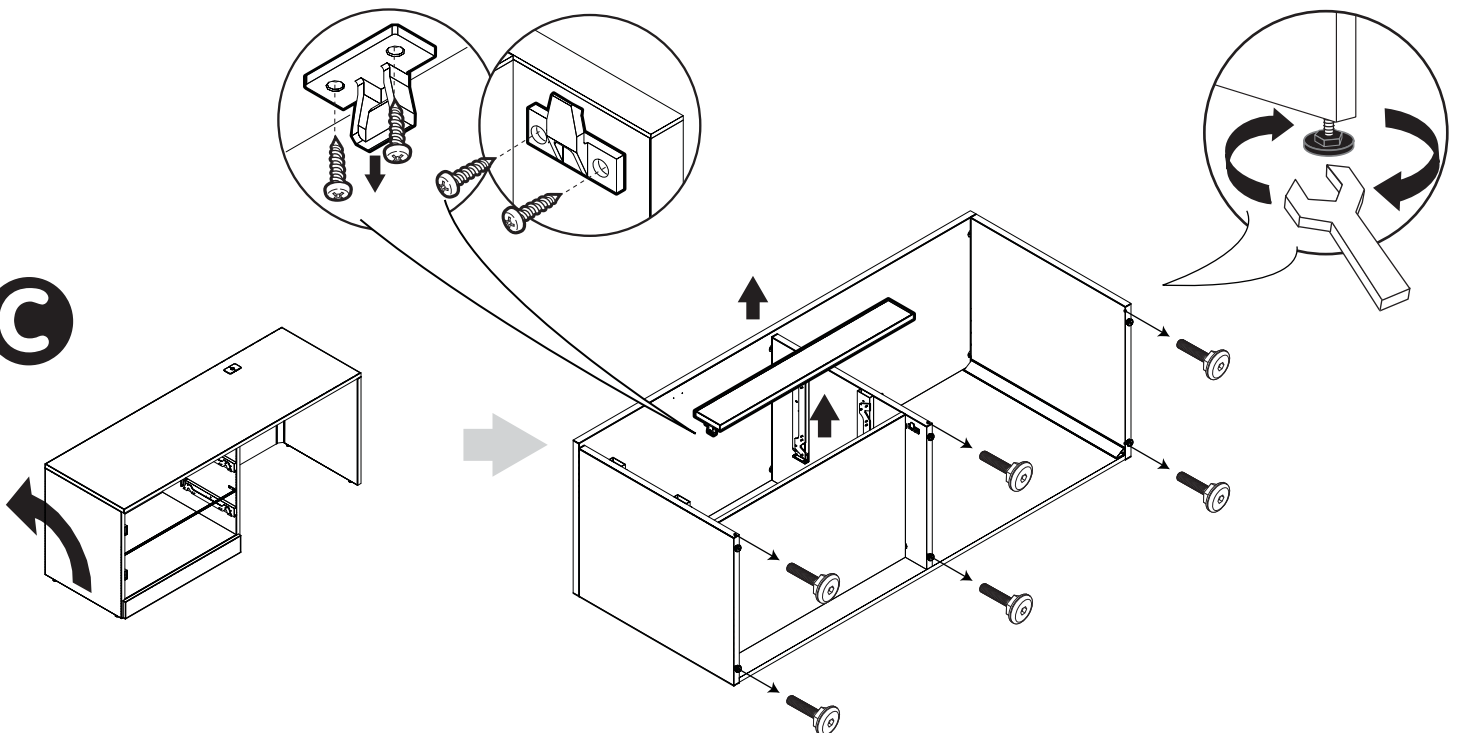
- A** Remove Drawers by Fully Extending and Disengaging latch on each slide while pulling drawer out.
- B** On Drawer boxes, unscrew and remove slide channels, handles and door lock mechanism . Remove hanging file system.
- C** Turn unit. Unscrew and remove "C" shape metal. Pull kickbase and unscrew kickbase connector. Unscrew levelers and door stopper.
- D** Untighten Blum Connector. Pull over aluminium cleat cover. Unscrew screws and remove aluminium cleat.
- E** Unscrew Blum Connector screws
- F** Unscrew and remove glide channels.

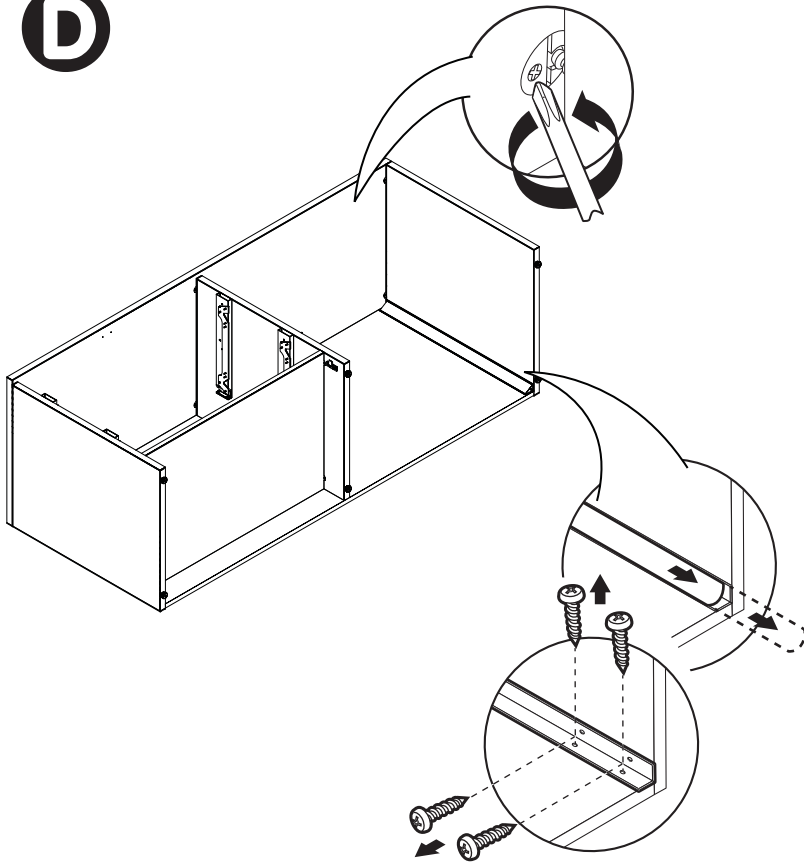
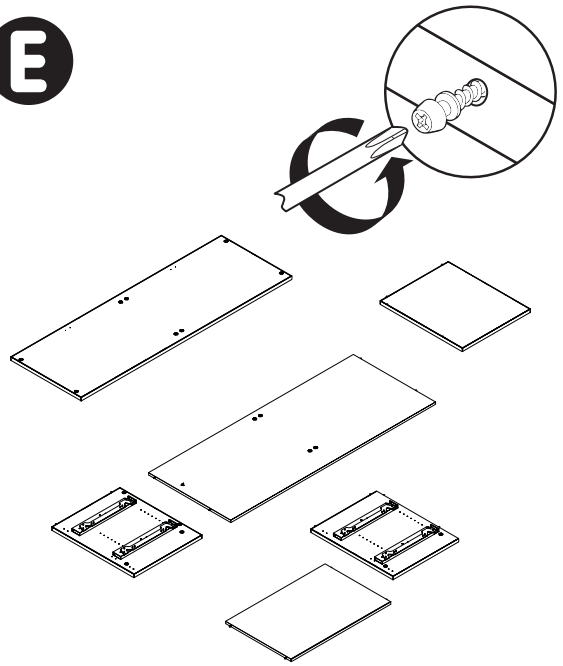
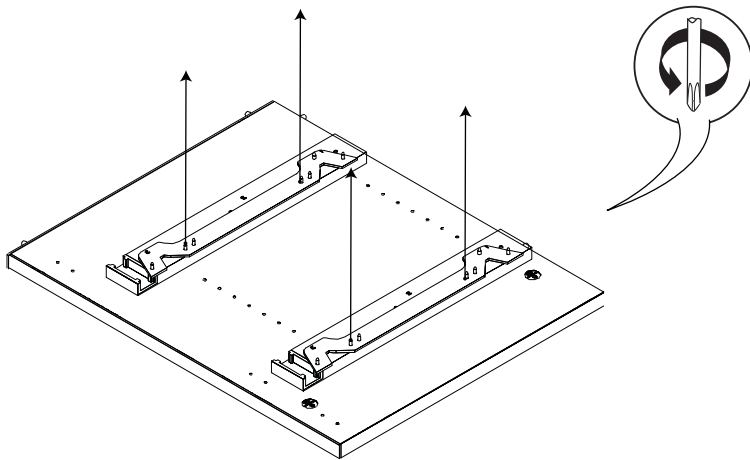
ITEM	DESCRIPTION	QTY	MATERIAL
1	TOP	1	PARTICLEBOARD
2	BACK	1	PARTICLEBOARD
3	SIDE	2	PARTICLEBOARD
4	INSIDE GABLE	1	PARTICLEBOARD
5	"C" SHAPE	1	STEEL
6	BOTTOM	1	PARTICLEBOARD
7	KICKBASE	1	PARTICLEBOARD
8	DRAWER	2	MDF
9	DRAWER FRONT	2	PARTICLEBOARD
10	HANGING FILE SYSTEM	2	STEEL/PLASTIC
11	DRAWER LOCK MECHANISM	1	STEEL
12	HANDLES	2	ALUMINIUM
13	SLIDES (INNER)	4	STEEL
14	SLIDES (BASE PLATE)	4	STEEL
15	LEVELER	4	STEEL
16	ALUMINIUM CLEAT AND COVER	1	ALUMINIUM
17	CLIP ON KICK BASE CONNECTOR	2	STEEL
18	SCREWS	82	STEEL
19			
20			
21			
22			

Please contact Global Customer Care at 905-660-5101 for any questions or concerns.

NOTE: Any alterations to listed components will void the manufacturer's warranty. The manufacturer will not be responsible for any damage or bodily harm caused by alterations in accordance with national or local electrical codes and manufacturer's specifications. In accordance with the manufacturer's policy of continual product improvement, the product presented in this document is subject to change without notice or obligation.

Z<sub>Dis</sub> 13 rev: 00

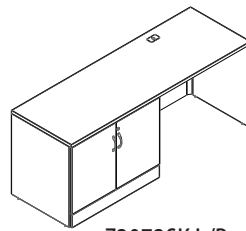
**A****B****C**

**D****E****F**



ZIRA

Kneespace Storage Cabinet



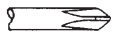
Z2072SK L/R  
Z2472SK L/R

## Disassembly Instructions

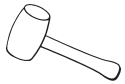
### TOOLS REQUIRED



WRENCH  
Size #16 or 5/8"



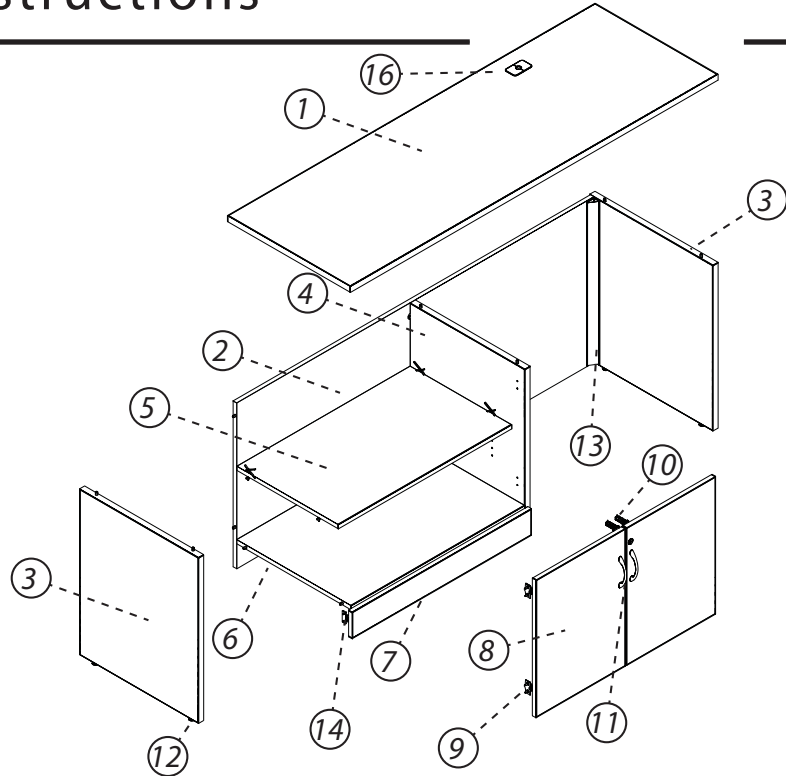
PHILLIPS  
Screwdriver size #2



Rubber Mallet



Safety Glasses



### STEPS

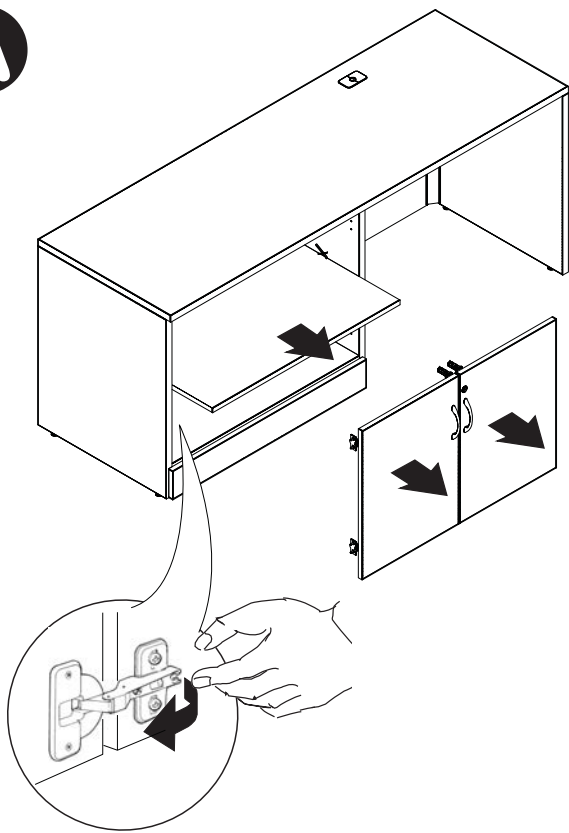
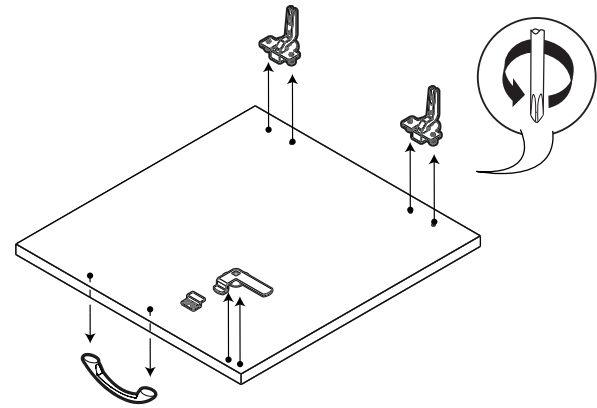
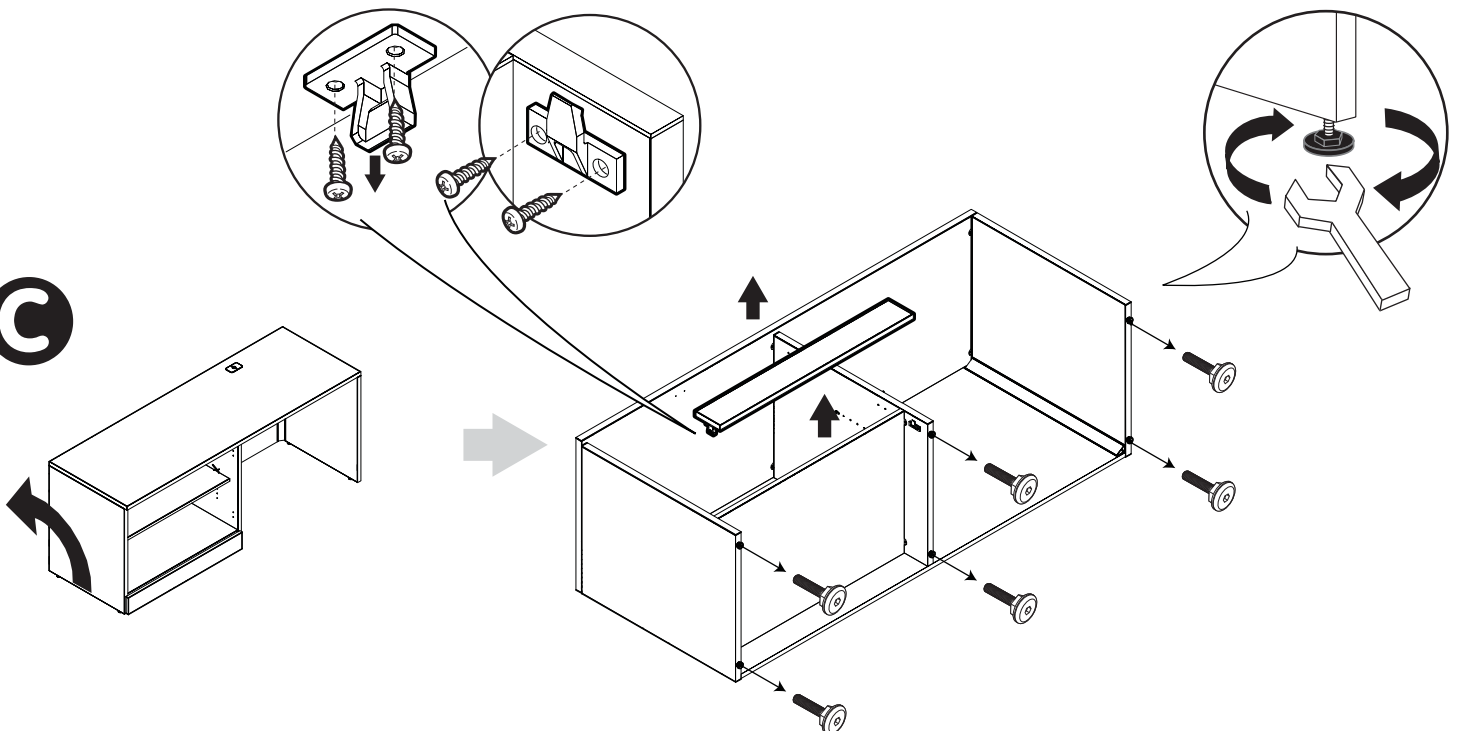
- A** Remove door by pressing on back of hinges and pulling doors forward.
- B** Unscrew and remove hinges, handles and door lock mechanism from doors.
- C** Turn unit. Pull kickbase and unscrew kickbase Connector. Unscrew levelers and door stopper.
- D** Untighten Blum Connector. Pull over aluminium cleat cover. Unscrew screws and remove aluminium cleat.
- E** Unscrew Blum Connector screws

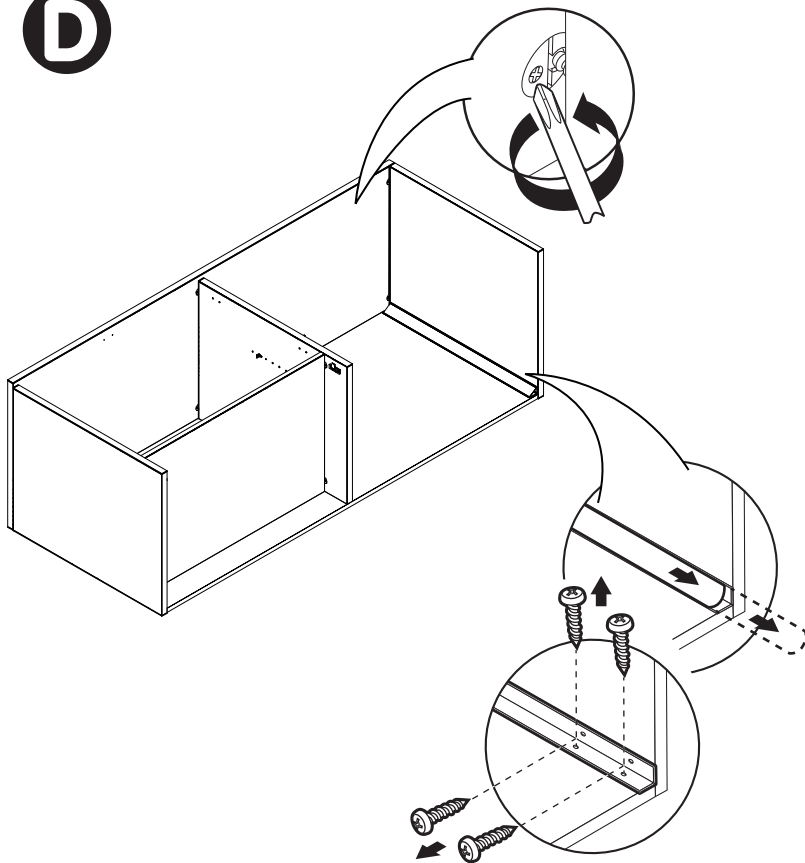
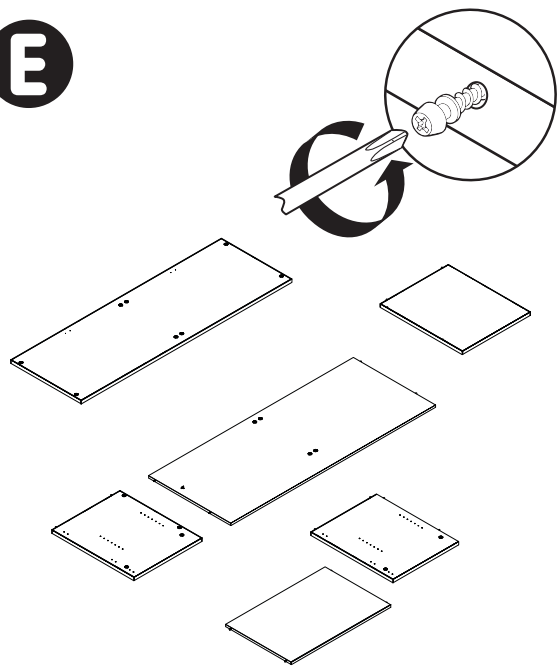
ITEM	DESCRIPTION	QTY	MATERIAL
1	TOP	1	PARTICLEBOARD
2	BACK	1	PARTICLEBOARD
3	SIDE	2	PARTICLEBOARD
4	INSIDE GABLE	1	PARTICLEBOARD
5	SHELF	1	PARTICLEBOARD
6	BOTTOM	1	PARTICLEBOARD
7	KICKBASE	1	PARTICLEBOARD
8	DOOR	2	PARTICLEBOARD
9	HINGE	2	STEEL
10	DOOR LOCK MECHANISM	1	STEEL/PLASTIC
11	HANDLES	2	ALUMINIUM
12	LEVELER	2	STEEL
13	ALUMINIUM CLEAT AND COVER	1	ALUMINIUM/PVC
14	CLIP ON KICK BASE CONNECTOR	2	PLASTIC
15	SCREWS	50	STEEL
16	GROMMET	1	PLASTIC
17			
18			
19			
20			
21			
22			

Please contact Global Customer Care at 905-660-5101 for any questions or concerns.

NOTE: Any alterations to listed components will void the manufacturer's warranty. The manufacturer will not be responsible for any damage or bodily harm caused by alterations in accordance with national or local electrical codes and manufacturer's specifications. In accordance with the manufacturer's policy of continual product improvement, the product presented in this document is subject to change without notice or obligation.

Z-Dis 14 rev: 00

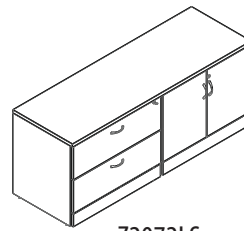
**A****B****C**

**D****E**



ZIRA

Lateral File/Storage Cabinet Credenza



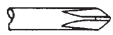
Z2072LS  
Z2472LS

## Disassembly Instructions

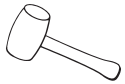
### TOOLS REQUIRED



WRENCH  
Size #16 or 5/8"



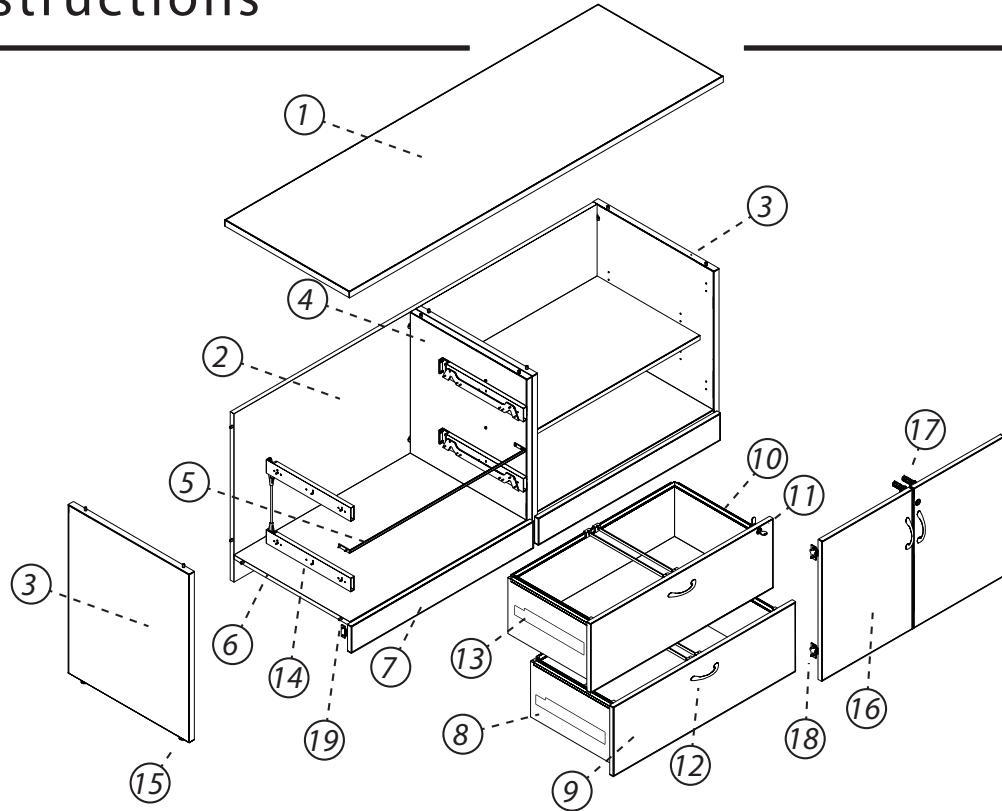
PHILLIPS  
Screwdriver size #2



Rubber Mallet



Safety Glasses



### STEPS

- A** Remove Drawers by Fully Extending and Disengaging latch on each slide while pulling drawer out. Remove door by pressing on back of hinges and pulling doors forward.
- B** On Drawer boxes, unscrew and remove slide channels, handles and door lock mechanism . Remove hanging file system.
- C** Unscrew and remove hinges, handles and door lock mechanism from doors.
- D** Turn unit. Unscrew and remove "C" shape metal. Pull kickbase and unscrew kick base connector. Unscrew levelers and door stopper.
- E** Untighten Blum Connector
- F** Unscrew Blum Connector screws
- G** Unscrew and remove glide channels.

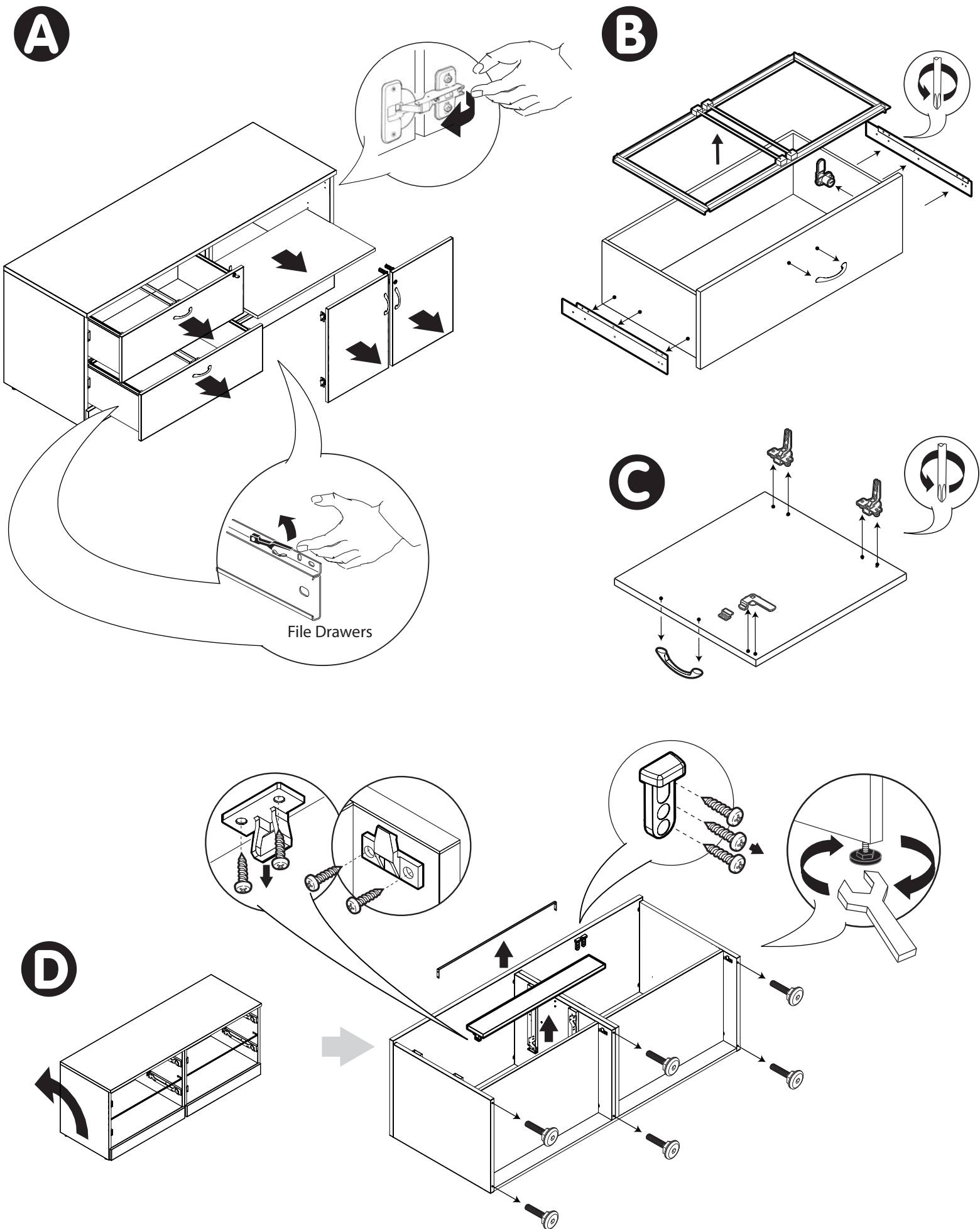
ITEM	DESCRIPTION	QTY	MATERIAL
1	TOP	1	PARTICLEBOARD
2	BACK	1	PARTICLEBOARD
3	SIDE	2	PARTICLEBOARD
4	INSIDE GABLE	2	PARTICLEBOARD
5	"C" SHAPE	2	STEEL
6	BOTTOM	2	PARTICLEBOARD
7	KICKBASE	2	PARTICLEBOARD
8	DRAWER	2	MDF
9	DRAWER FRONT	2	PARTICLEBOARD
10	HANGING FILE SYSTEM	2	STEEL/PLASTIC
11	DRAWER LOCK MECHANISM	1	STEEL
12	HANDLES	4	ALUMINIUM
13	SLIDES (INNER)	4	STEEL
14	SLIDES (BASE PLATE)	4	STEEL
15	LEVELER	4	STEEL
16	DOOR	2	PARTICLEBOARD
17	DOOR LOCK MECHANISM	1	STEEL
18	HINGES	4	STEEL
19	CLIP ON KICK BASE CONNECTOR	4	PLASTIC
20	SCREWS	110	STEEL
21			
22			

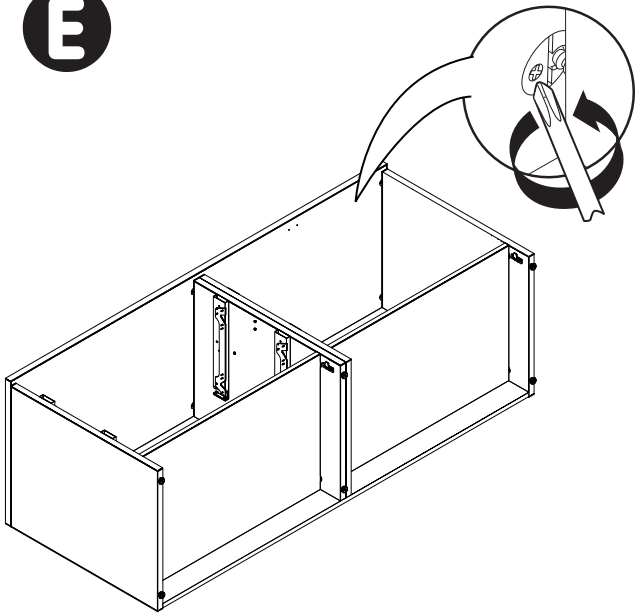
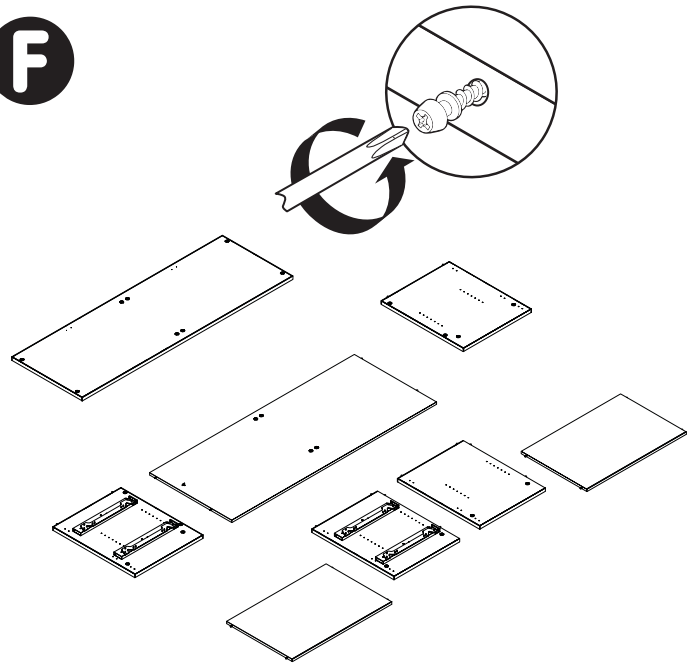
Please contact Global Customer Care at 905-660-5101 for any questions or concerns.

NOTE: Any alterations to listed components will void the manufacturer's warranty. The manufacturer will not be responsible for any damage or bodily harm caused by alterations in accordance with national or local electrical codes and manufacturer's specifications. In accordance with the manufacturer's policy of continual product improvement, the product presented in this document is subject to change without notice or obligation.

Z<sub>Dis</sub> 15 rev: 00





**E****F****G**