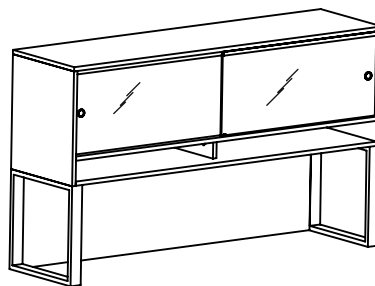


Generic Hutch

Disassembly Instructions



Product designed for disassembly
in a reasonable time frame.(5 minutes or less)

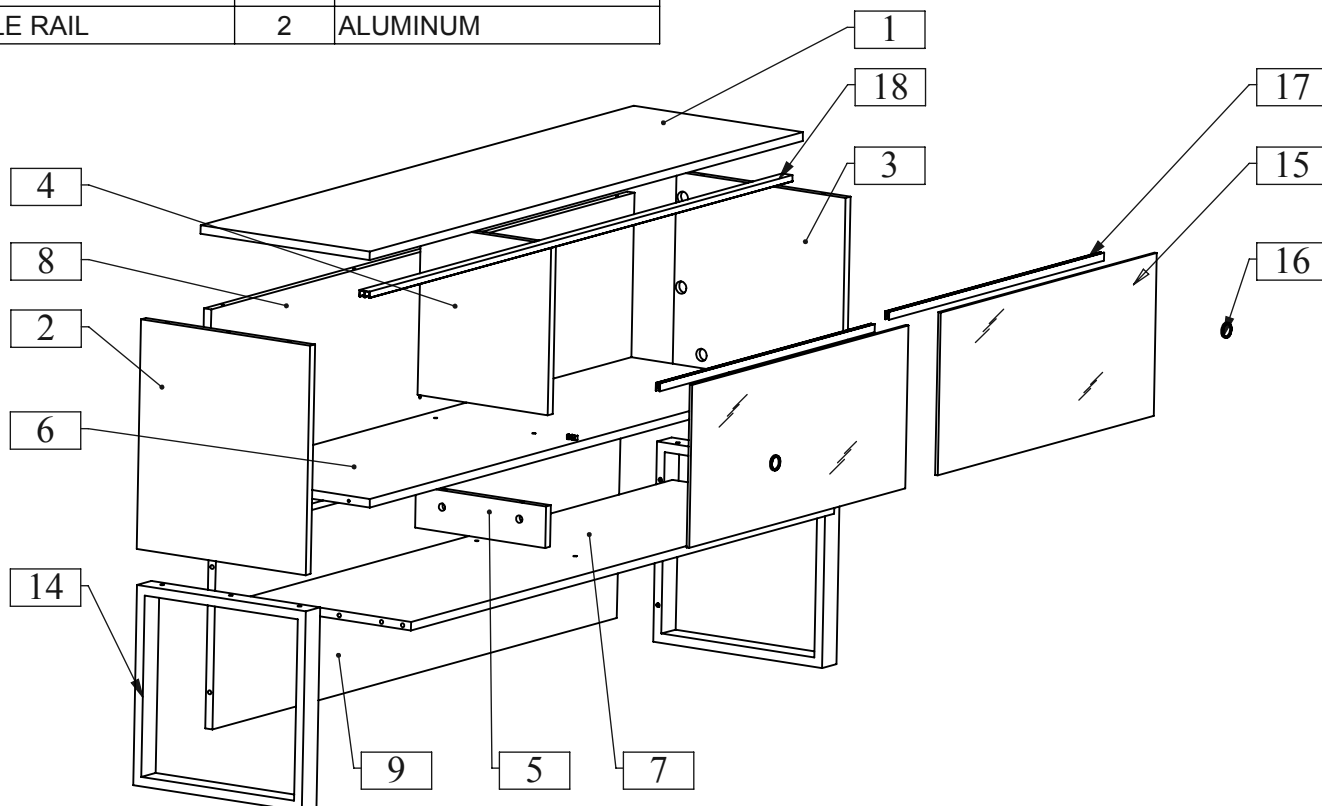
ITEM	DESCRIPTION	QTY	MATERIAL
1	TOP PANEL	1	PARTICLE BOARD
2	GABLE LEFT	1	PARTICLE BOARD
3	GABLE RIGHT	1	PARTICLE BOARD
4	UPPER DIVIDER	1	PARTICLE BOARD
5	LOWER DIVIDER	1	PARTICLE BOARD
6	FIXED SHELF	1	PARTICLE BOARD
7	BOTTOM PANEL	1	PARTICLE BOARD
8	UPPER BACK PANEL	1	PARTICLE BOARD
9	LOWER BACK PANEL	1	PARTICLE BOARD
10	BLUM CONNECTOR	28	STEEL
11	BLUM SCREW	28	STEEL
12	TITUS CAM	11	STEEL&PLASTIC
13	TITUS SCREW	11	STEEL
14	METAL SUPPORTS	2	STEEL
15	GLASS DOORS	2	TEMPERED GLASS
16	HANDLE	2	ALUMINUM
17	RAIL FOR GLASS	2	ALUMINUM
18	DOUBLE RAIL	2	ALUMINUM

Required tools:

Phillips screwdriver size #2 

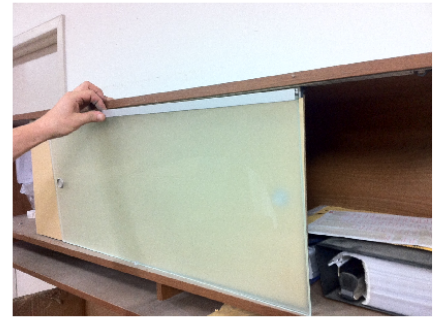
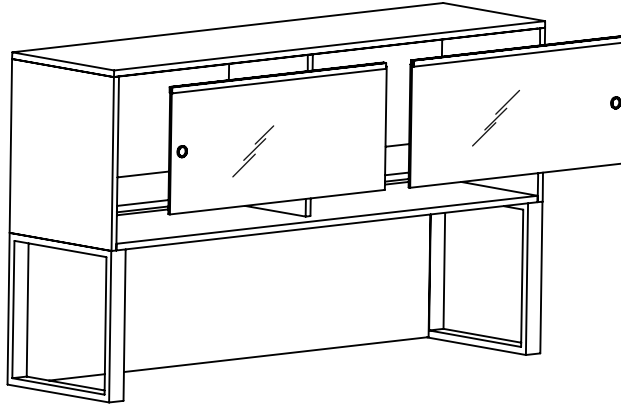
Rubber mallet 

Safety glasses 

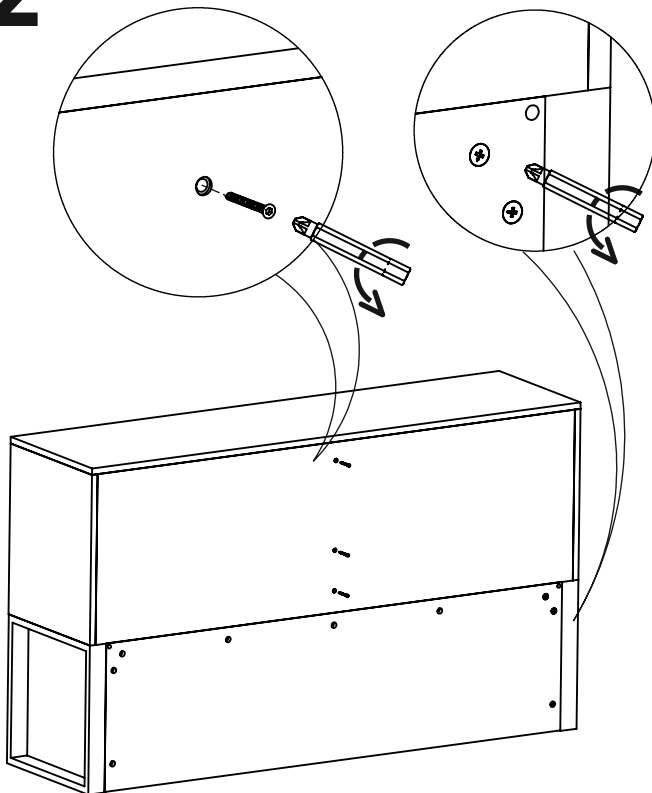


NOTE: Any alteration to listed components will void the manufacturer's warranty. The manufacturer will not be responsible for any damage or bodily harm caused by alterations in accordance with national or local electrical codes and manufacturer's specifications. In accordance with the manufacturer's policy of continual product improvement, the product presented in this document is subject to change without notice or obligation.

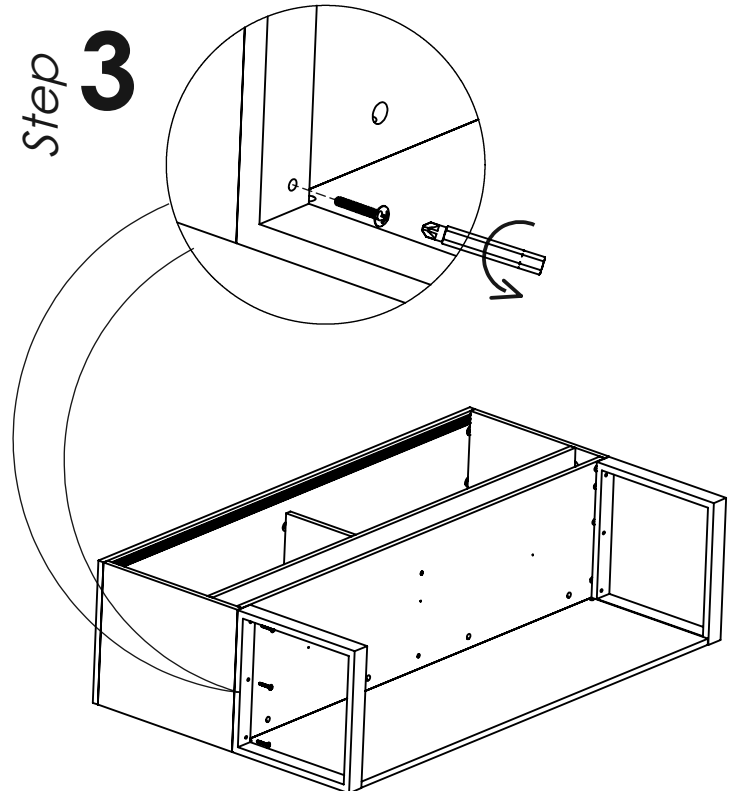
Step 1



Step 2

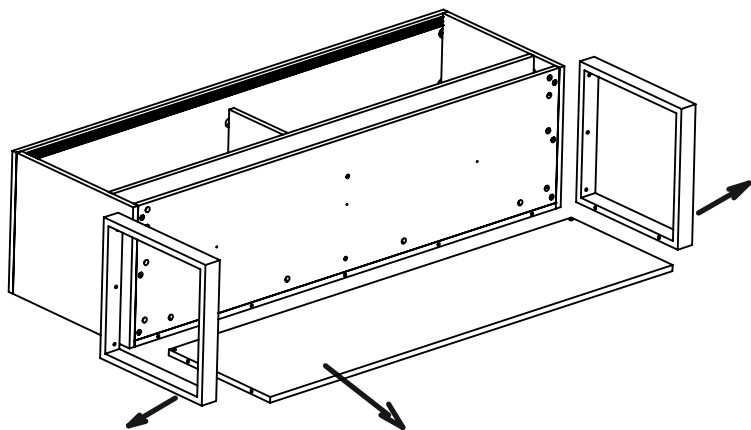


Step 3



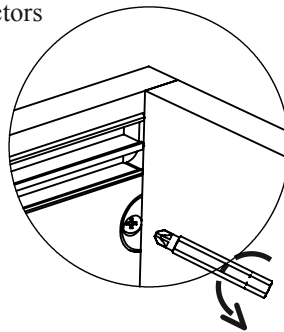
NOTE: Any alteration to listed components will void the manufacturer's warranty. The manufacturer will not be responsible for any damage or bodily harm caused by alterations in accordance with national or local electrical codes and manufacturer's specifications. In accordance with the manufacturer's policy of continual product improvement, the product presented in this document is subject to change without notice or obligation.

Step 4

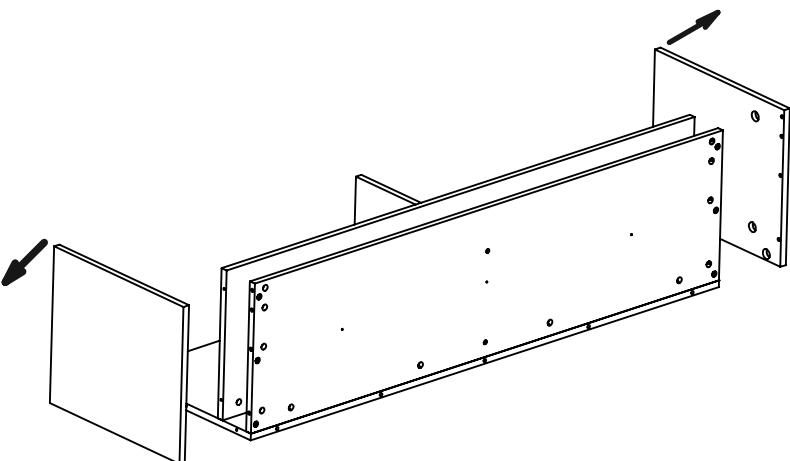


Step 5

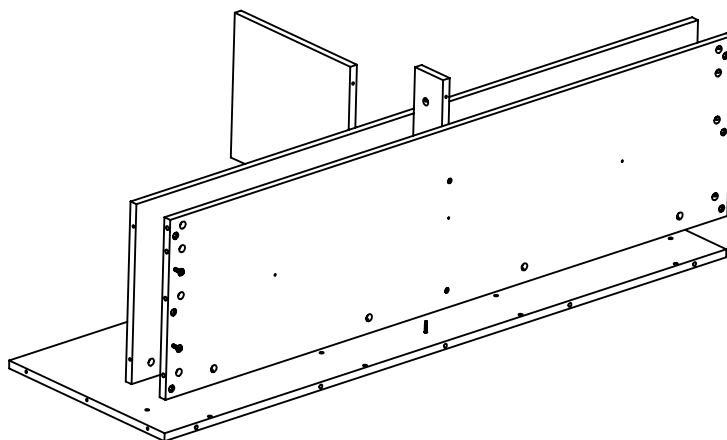
Untighten Blum connectors



Step 6



Step 7



NOTE: Any alteration to listed components will void the manufacturer's warranty. The manufacturer will not be responsible for any damage or bodily harm caused by alterations in accordance with national or local electrical codes and manufacturer's specifications. In accordance with the manufacturer's policy of continual product improvement, the product presented in this document is subject to change without notice or obligation.