

A woman with long dark hair, wearing a grey sweater and black pants, is sitting on a large, modular red sofa. She is holding a smartphone in her right hand and looking at it. The sofa has a textured red fabric and a dark, curved armrest. To her right is a round, light-colored wooden coffee table. The background is a plain white wall.

river+

workplace

global

Welcome, share, unwind



Meet River+™ the next generation of our highly popular lounge series, now with industry-leading support for workplace, education and healthcare. River+ is tested to three times the BIFMA standard and warranted to an active weight of 600 lbs. per seat location to support the demands of 24/7 environments.

The series offers three back heights, multiple seat heights, and supports both linear, curvilinear, 90-degree and 120-degree configurations. Elegant polished aluminum arms are fully modular and can be installed and relocated on-site to add support where required and adapt when needs change.

Seating shown in Arc-Com Sherlock, Garnet and Arc-Com Hush, Flamingo with Black legs and armcaps. Round coffee table with Black legs and round laptop table with Black base shown in Walnut Heights. ML bar seating and River Personal Harbor seating shown.

Expand the audience



Seating shown in Arc-Com Sherlock, Garnet and Arc-Com Hush, Flamingo with Black legs. Round coffee table with Black legs and back shelf shown in Walnut Heights. ML bar seating shown.

Don't let the walls define the gathering



River+ includes a fully modular selection of open benches that can be combined and connected to any of the lounge models or used on their own (as shown). The River+ series includes new Media Hearths to support online meetings and presentations where wall-mounted displays are not possible or desired.

Media Hearths support dual monitor displays up to 50" and single monitors up to 65" with cable management and fully finished backs for open area applications.

Additional information can be found on the Global [website](#).



Seating shown in Luum Vital, Cosmos and Luum Disrupt, Calibrate with Black legs.

A place where people intersect



River+ was designed to support the many places where people convene, relax and intersect during their day. Engineered and tested to support the demands of 24/7 environments, River+ is an enduring solution for co-working environments, hospitality lounges, airport waiting spaces, libraries and student common spaces. Optional steel bottom closures and security fasteners expand the range of interior applications.

Additional information can be found on the Global [website](#).

Break it up or bring it together



Change is the constant in today's world. River+ supports whatever that change may bring along with it. As a fully modular seating series, it finds its place as individual seats, joined together or a combination of the two. The ganging hardware is an integral component of every model, with no additional parts or tools required to make a change next month or next year.

Seating shown in CF Stinson Gravity, Coconut with Latte legs. Round coffee tables shown in Walnut Heights with Latte legs. Round laptop tables shown in Walnut Heights with Chrome bases.



Seating shown in CF Stinson Gravity, Coconut with Latte legs. Round coffee table shown in Walnut Heights with Latte legs. Round laptop table shown in Walnut Heights with Latte base.

A relaxed atmosphere



River+ upholstered arm models are well suited to hospitality applications or when a more relaxed, residential atmosphere is desired. Upholstered arm lounge chairs and sofas are available in several widths, shapes and all three back heights. Optional integrated power and USB charging can be specified at front or side locations for easy access.

Seating shown in CF Stinson Gravity, Coconut with Latte legs. Square coffee tables shown in Walnut Heights with Latte legs.

It's in the details

Seat heights



Standard 17.5" seat height - 6.5" legs



Higher 19" seat height - 8" legs



Lower 14" seat height - 3" legs
Available on benches and tables only

Security



Optional steel bottom with tamperproof fasteners

Back heights

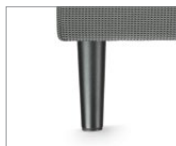


Three back heights

Leg finishes



Chrome



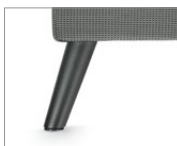
Black



Latte



Tungsten



Glides are non-marking and height adjustable



Leg with floor mount available for all leg heights

Cleaning



Open clean out between seat and back



Elevated leg design allows for ease of cleaning

Extended leg



Extended leg



Extended leg with floor mount

More details

Arms



Fully upholstered arm with optional power and USB charging



Polished aluminum arm



Polished aluminum arm available with nylon armcap, shown in Latte



Black



Fog

Modular arm



Arms can be installed quickly on-site in various locations per unit with no down time

Power and USB units



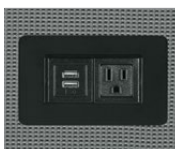
Front face of seating unit



End face of seating unit



Side or top of freestanding tables
Top only on linking tables



Optional power and USB units available on most connector models (available in Jet Black and White)

Back shelf



A 10" deep back shelf is available in a wide range of low pressure laminate finishes



Shelf support with integrated bag hook

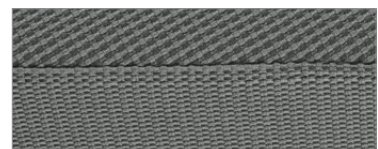
Features



Straight or curved linking tables



Included quick connect/disconnect hardware swivels out of sight when not in use



Durable double stitching on all seams



RVP232

3 [R27817S] 2 [R27834] 1 [R27860] 2 [R27843]
3 [ML171733]



RVP215

4 [R27815] 2 [R27818]



RVP234

2 [R27804] 1 [R27824] 1 [R27841] 1 [R27840]
1 [R27845]



RVP214

3 [R27804]



RVP205

6 [R27816] 1 [R27862] 2 [7743]



RVP203

6 [R27817] 1 [R27860]



RVP220

4 [R27832] 2 [R27840] 3 [7743]



RVP227

2 [R27831] 4 [R27832] 2 [R27836] 2 [R27837]
1 [R27859] 2 [R27862] 4 [7745]



RVP207

1 [R27804] 2 [R27821] 1 [R27832]
1 [R27831] 1 [R27856]



RVP216

2 [R27815] 2 [R27817S] 3 [R27843] 1 [R27844]
1 [R27846] 2 [R27832]



RVP210

2 [R27805] 3 [R27808] 2 [R27822] 3 [7745]



RVP213

3 [R27817] 3 [R27818] 1 [R27861] 1 [7743]
1 [R27834]

Please visit globalfurnituregroup.com for additional product information including industry and environmental certifications.

Cover: Seating shown in Arc-Corn Sherlock, Garnet with Black legs and armcaps. Round coffee table shown in Walnut Heights with Black legs.



U.S.A.

Global Furniture Group
17 West Stow Road P.O. Box 562
Marlton New Jersey U.S.A. 08053
Tel (856) 596-3390 (800) 220-1900

Canada

Global Furniture Group
1350 Flint Rd., Toronto Ontario Canada M3J 2J7
Sales & Marketing: Tel (1-877) 446-2251

International

Global Furniture Group
560 Supertest Road, Toronto
Ontario Canada M3J 2M6
Tel (416) 661-3660 (800) 668-5870

Offices throughout Canada, United States, United Kingdom and Brazil. Distribution around the world. A member of Global Furniture Group. © 2023 ®™ Trademarks of Global Furniture Group. These products may be covered by one or more issued patents or pending patent applications in Canada, the U.S. and elsewhere. All intellectual property rights in applicable trademarks, patents and industrial designs are strictly reserved. Made in Canada. Specifications are correct at time of printing. Printed in Canada. Creative / Global Design Center 181223 21.0101