

river+

global



# Universal design and round-the-clock performance



Meet River+™ the next generation of our highly popular lounge series, now with industry-leading support for healthcare. River+ has been designed and tested to perform at three times the BIFMA standard for waiting, lounge, staff and admission areas that operate around the clock.

River+ has an inclusive design that respects the needs of a diverse population, including active weight testing to 600 lbs. per seat location to accommodate the full range of body types. Other design considerations include multiple seat heights for different age groups and abilities, an angled front face on seats to ease standing, and rounded corners on tables for people to move safely and comfortably.

Seating shown in CF Stinson Gravity, Tide and Granite with Latte legs and armcaps. Square coffee table with rounded corners shown in Walnut Heights with Latte legs. Round laptop tables shown in Walnut Heights with Black bases.

# Bring people together



People gather in places where their needs are addressed. River+ lounge models are offered in three back heights for varying degrees of privacy and back support. On lounge models, a taller leg option is available to increase the seat height from 17.5" to 19" where required. Benches also offer a lower leg height option to reduce the seat height to 14" within children's units. Optional steel bottom enclosures, counter weights and security fasteners support the application of River+ in secure and mental health areas.

The River+ series includes new Media Hearths to support monitors where wall-mounted displays are not possible or desired. Media Hearths support dual monitors up to 50" and single monitors up to 65" with cable management and fully finished backs for open area applications.

Seating shown in CF Stinson Gravity, Coconut with Latte legs. Round coffee table and Media Hearth shown in Walnut Heights with Latte legs.



---

# A place where people intersect



River+ was designed to support the many places where people convene, relax and intersect during their day. Engineered and tested to support the demands of 24/7 environments, River+ is an enduring solution for high traffic areas. Visitors, patients and caregivers can recharge and connect with optional power and USB charging outlets on all River+ models. Complementary laptop tables provide a personal surface where you need it.

Additional information can be found on the Global [website](#).





Seating shown in CF Stinson Gravity, Coconut and Tide with Latte legs and armcaps.



# Designed to make a difference



Lounge models are available with back shelves to expand the audience, with integrated bag hooks to keep personal items at hand and off the floor.

Elegant polished aluminum arms are fully modular and can be installed or relocated on-site to define personal space or assist those who require a safe and stable support when sitting or standing up.

All lounge units feature a continuous clean out between the seat and back to facilitate housekeeping and sanitizing protocols. The elevated leg design provides ample clearance for floor cleaning.

Top: seating shown in Arc-Com Sherlock, Ash and Arc-Com Hush, Steel with Black legs. Round coffee table with Black legs and back shelf shown in Walnut Heights. ML bar seating shown. Above and right, seating shown in CF Stinson Gravity, Coconut and Tide with Latte legs and armcaps.

# Break it up or bring it together



Change is the constant in today's world. River+ supports whatever that change may bring along with it. As a fully modular seating series, it finds its place as individual seats, joined together or a combination of the two. The ganging hardware is an integral component of every model, with no additional parts or tools required to make a change next month or next year.

Additional information can be found on the Global [website](#).

Seating shown in CF Stinson Gravity, Coconut with Latte legs. Round coffee tables shown in Walnut Heights with Latte legs. Round laptop tables shown in Walnut Heights with Chrome bases.





Seating shown in CF Stinson Gravity, Coconut with Latte legs. Round coffee table shown in Walnut Heights with Latte legs. Round laptop table shown in Walnut Heights with Latte base.



## A relaxed atmosphere



River+ upholstered arm models are well suited to hospitality applications or when a more relaxed, residential atmosphere is desired. Upholstered arm lounge chairs and sofas are available in several widths, shapes and all three back heights. Optional integrated power and USB charging can be specified at front or side locations for easy access.

Seating shown in CF Stinson Gravity, Coconut with Latte legs. Square coffee tables shown in Walnut Heights with Latte legs.



# It's in the details

## Seat heights



Standard 17.5" seat height - 6.5" legs



Higher 19" seat height - 8" legs



Lower 14" seat height - 3" legs  
Available on benches and tables only

## Security



Optional steel bottom with tamperproof fasteners

## Back heights

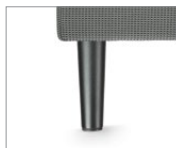


Three back heights

## Leg finishes



Chrome



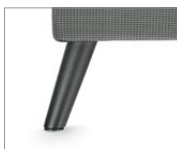
Black



Latte



Tungsten



Glides are non-marking and height adjustable



Leg with floor mount available for all leg heights

## Cleaning



Open clean out between seat and back



Elevated leg design allows for ease of cleaning

## Extended leg



Extended leg



Extended leg with floor mount



# More details

## Arms



Fully upholstered arm with optional power and USB charging



Polished aluminum arm



Polished aluminum arm available with nylon armcap, shown in Latte



Black



Fog

## Modular arm



Arms can be installed quickly on-site in various locations per unit with no down time

## Power and USB units



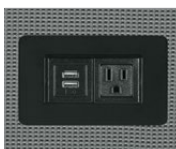
Front face of seating unit



End face of seating unit

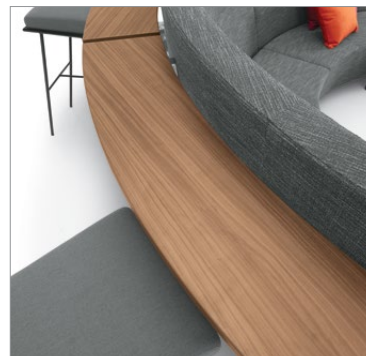


Side or top of freestanding tables  
Top only on linking tables



Optional power and USB units available on most connector models (available in Jet Black and White)

## Back shelf



A 10" deep back shelf is available in a wide range of low pressure laminate finishes



Shelf support with integrated bag hook

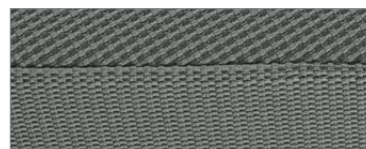
## Features



Straight or curved linking tables



Included quick connect/disconnect hardware swivels out of sight when not in use



Durable double stitching on all seams





**RVP222**

3 [R27842] 3 [7743]



**RVP202**

6 [R27818]



**RVP218**

2 [R27842] 2 [R27808]



**RVP224**

2 [R27840] 2 [R27841] 2 [R27857]



**RVP205**

6 [R27816] 1 [R27862] 2 [7743]



**RVP203**

6 [R27817] 1 [R27860]



**RVP220**

4 [R27832] 2 [R27840] 3 [7743]



**RVP208**

4 [R27808] 2 [7745]



**RVP232**

3 [R27817S] 2 [R27834] 1 [R27860] 2 [R27843]  
3 [ML171733]



**RVP216**

2 [R27815] 2 [R27817S] 3 [R27843] 1 [R27844]  
1 [R27846] 2 [R27832]



**RVP210**

2 [R27805] 3 [R27808] 2 [R27822] 3 [7745]



**RVP213**

3 [R27817] 3 [R27818] 1 [R27861] 1 [7743]  
1 [R27834]

Please visit [globalfurnituregroup.com](http://globalfurnituregroup.com) for additional product information including industry and environmental certifications.

Cover: Seating shown in CF Stinson Gravity, Coconut and Tide with Latte legs and armcaps. Round coffee table shown in Walnut Heights with Latte legs.



**U.S.A.**

Global Furniture Group  
17 West Stow Road P.O. Box 562  
Marlton New Jersey U.S.A. 08053  
Tel (856) 596-3390 (800) 220-1900

**Canada**

Global Furniture Group  
1350 Flint Rd., Toronto Ontario Canada M3J 2J7  
Sales & Marketing: Tel (1-877) 446-2251

**International**

Global Furniture Group  
560 Supertest Road, Toronto  
Ontario Canada M3J 2M6  
Tel (416) 661-3660 (800) 668-5870

Offices throughout Canada, United States, United Kingdom and Brazil. Distribution around the world. A member of Global Furniture Group. © 2023 ®™ Trademarks of Global Furniture Group. These products may be covered by one or more issued patents or pending patent applications in Canada, the U.S. and elsewhere. All intellectual property rights in applicable trademarks, patents and industrial designs are strictly reserved. Made in Canada. Specifications are correct at time of printing. Printed in Canada. Creative / Global Design Center 181223 21.0101