

A man with dark hair is sitting on a large, curved, mustard-yellow sofa. He is wearing a black Adidas track jacket with three white stripes on each sleeve, a white t-shirt, black pants, and brown sneakers with white soles. He is wearing large black headphones and is looking down at an open book he is holding in his lap. The background is a plain, light grey floor.

river+

education



Welcome, share, unwind



Meet River+™ the next generation of our highly popular lounge series, now with industry-leading support for education. River+ is tested to three times the BIFMA standard and warranted to an active weight of 600 lbs. per seat location to support the rigors of learning environments and social spaces alike. The series offers three back heights, multiple seat heights, and supports both linear, curvilinear, 90-degree and 120-degree configurations.

Seating shown in Knoll Diva, Daffodil with Black legs. Round laptop tables in Walnut Heights with Black bases. River Personal Harbor seating shown in Luum Situ, Statue.

Learning is social



River+ includes modular benches as well as round benches in multiple sizes and three seat heights that can be mixed and matched for different age groups. River laptop tables in common areas enable students to engage between classes in a relaxed and informal setting.

The River+ series includes new Media Hearths to support online media where wall-mounted displays are not possible or desired. Media Hearths support dual monitors up to 50" and single monitors up to 65" with cable management and fully finished backs for open area applications.

Seating shown in Luum Heather Felt, Bone Ash, Guilford of Maine Quadrille, Zest and Luum Disrupt, Calibrate with Tungsten legs. Media Hearth shown in Walnut Heights with Tungsten legs. Round laptop table shown in Walnut Heights with Black base.

Bring growing minds together



Providing an environment for young people to find and develop their confidence with classmates and teachers is critical to a student's growth and self-esteem. River+ can create a warm and relaxed setting that can take the jitters out of being 'center stage' for a reading exercise or presentation. Important first steps in a collaborative world.

Additional information can be found on the Global [website](#).



Seating shown in Luum Cross Die, Artichoke with short Tungsten legs.

An ever-changing landscape for learning



As a fully modular seating series, River+ is simple to reconfigure for varying class sizes and different learning activities. Both the 120-degree shapes and the curvilinear shapes provide umpteen possibilities for breakout groups while remaining safe and stable for younger students.

River Personal Harbors provide a complementary place and refuge for students who choose to step away from the group for focused learning or personal time.

Additional information can be found on the Global [website](#).

Break it up or bring it together



Change is the constant in today's world. River+ supports whatever that change may bring along with it. As a fully modular seating series it finds its place as individual seats, joined together or a combination of the two. The ganging hardware is an integral component of every model, with no additional parts or tools required to make a change next month or next year.

Seating shown in CF Stinson Gravity, Coconut with Latte legs. Round coffee tables shown in Walnut Heights with Latte legs. Round laptop tables shown in Walnut Heights with Chrome bases.



Seating shown in CF Stinson Gravity, Coconut with Latte legs. Round coffee table shown in Walnut Heights with Latte legs. Round laptop table shown in Walnut Heights with Latte base.

A relaxed atmosphere



River+ upholstered arm models are well suited to hospitality applications or when a more relaxed, residential atmosphere is desired. Upholstered arm lounge chairs and sofas are available in several widths, shapes and all three back heights. Optional integrated power and USB charging can be specified at front or side locations for easy access.

Seating shown in CF Stinson Gravity, Coconut with Latte legs. Square coffee tables shown in Walnut Heights with Latte legs.

It's in the details

Seat heights



Standard 17.5" seat height - 6.5" legs



Higher 19" seat height - 8" legs



Lower 14" seat height - 3" legs
Available on benches and tables only

Security



Optional steel bottom with tamperproof fasteners

Back heights

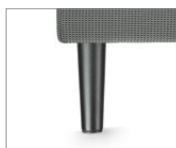


Three back heights

Leg finishes



Chrome



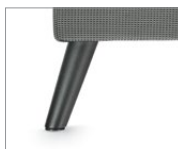
Black



Latte



Tungsten



Glides are non-marking and height adjustable



Leg with floor mount available for all leg heights

Cleaning



Open clean out between seat and back



Elevated leg design allows for ease of cleaning

Extended leg



Extended leg



Extended leg with floor mount

More details

Arms



Fully upholstered arm with optional power and USB charging



Polished aluminum arm



Polished aluminum arm available with nylon armcap, shown in Latte



Black



Fog

Modular arm



Arms can be installed quickly on-site in various locations per unit with no down time

Power and USB units



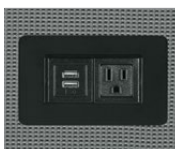
Front face of seating unit



End face of seating unit

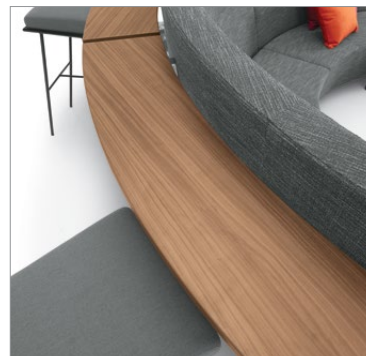


Side or top of freestanding tables
Top only on linking tables



Optional power and USB units available on most connector models (available in Jet Black and White)

Back shelf



A 10" deep back shelf is available in a wide range of low pressure laminate finishes



Shelf support with integrated bag hook

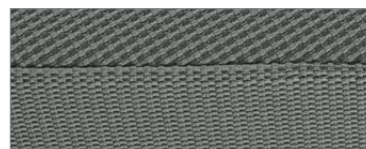
Features



Straight or curved linking tables



Included quick connect/disconnect hardware swivels out of sight when not in use



Durable double stitching on all seams



RVP235

2 [R27817] 3 [R27834] 3 [7743] 2 [7746]



RVP215

4 [R27815] 2 [R27818]



RVP229

5 [R27840] 1 [R27845]



RVP228

3 [R27840] 1 [R27841] 2 [R27843] 1 [R27845]
1 [7743] 2 [7748]



RVP230

3 [R27840] 3 [R27843] 1 [7743] 2 [7748]



RVP219

5 [R27834] 5 [R27835] 2 [R27860]



RVP220

4 [R27832] 2 [R27840] 3 [7743]



RVP227

2 [R27831] 4 [R27832] 2 [R27836] 2 [R27837]
1 [R27859] 2 [R27862] 4 [7745]



RVP232

3 [R27817S] 2 [R27834] 1 [R27860] 2 [R27843]
3 [ML171733]



RVP216

2 [R27815] 2 [R27817S] 3 [R27843] 1 [R27844]
1 [R27846] 2 [R27832]



RVP210

2 [R27805] 3 [R27808] 2 [R27822] 3 [7745]



RVP213

3 [R27817] 3 [R27818] 1 [R27861] 1 [7743]
1 [R27834]

Please visit globalfurnituregroup.com for additional product information including industry and environmental certifications.

Cover: Seating shown in Knoll Diva, Daffodil with Black legs.



U.S.A.

Global Furniture Group
17 West Stow Road P.O. Box 562
Marlton New Jersey U.S.A. 08053
Tel (856) 596-3390 (800) 220-1900

Canada

Global Furniture Group
1350 Flint Rd., Toronto Ontario Canada M3J 2J7
Sales & Marketing: Tel (1-877) 446-2251

International

Global Furniture Group
560 Supertest Road, Toronto
Ontario Canada M3J 2M6
Tel (416) 661-3660 (800) 668-5870

Offices throughout Canada, United States, United Kingdom and Brazil. Distribution around the world. A member of Global Furniture Group. © 2023 ®™ Trademarks of Global Furniture Group. These products may be covered by one or more issued patents or pending patent applications in Canada, the U.S. and elsewhere. All intellectual property rights in applicable trademarks, patents and industrial designs are strictly reserved. Made in Canada. Specifications are correct at time of printing. Printed in Canada. Creative / Global Design Center 181223 21.0101