

Seating Series

Primacare Motion Recliner



healthcare





*Adjustable comfort with a mobility option*



Upright position



Partial reclined position (allows user to adjust the degree of the recline to best suit the comfort level)

---

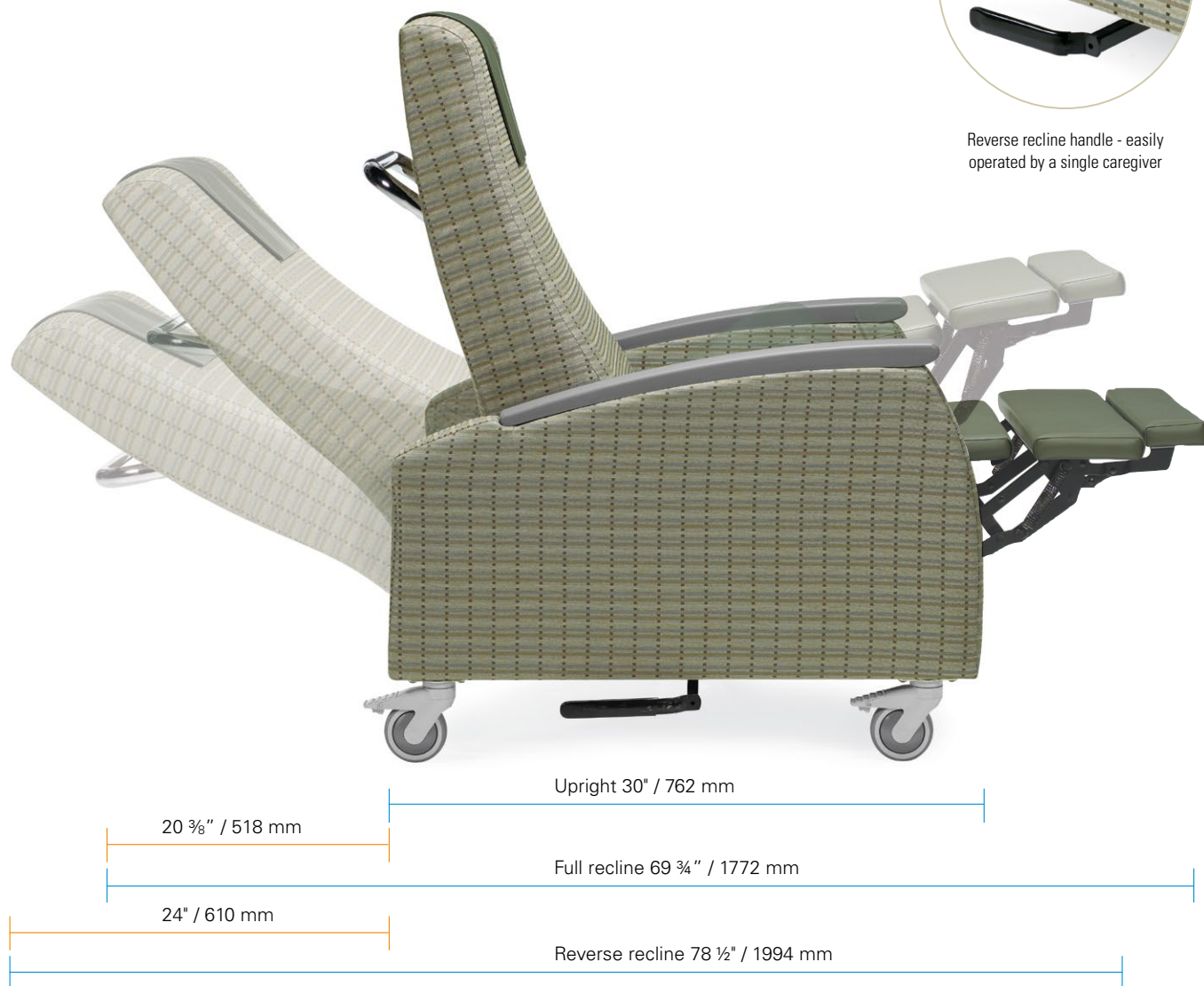
Our Primacare™ motion recliner is easy to operate and suits a wide range of healthcare applications. The upholstery details and shapes minimize dirt traps and facilitate easy cleaning and disinfecting in any position. The tailored appearance is compatible with a wide range of interior and architectural styles.

Primacare motion recliners incorporate high density Ultracell foam in the seat, back and 3-piece leg rest for superior comfort and longevity.

*Recline, effortlessly*



Reverse recline handle - easily operated by a single caregiver



Better by design. Primacare motion recliners follow the patient's intuitive response to reach for the arms when they want to come to a seated position. Additional ergonomic considerations include forward gripping armcaps, waterfall edge seats and built-in lumbar support. Primacare motion recliners are tested and rated to 400 lbs.

Above: Shown with optional reverse recline mechanism. This allows the caregiver to recline the chair to position the patient's feet, higher than their head. Shown in Mayer, Finish Line Greige, seat in Maharam, Ledger Loden, with optional urethane armcaps in Toast.

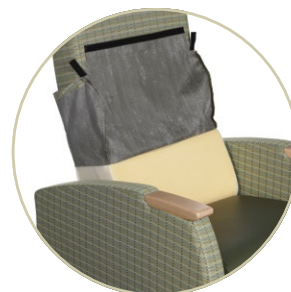
## Features



Optional contoured headrest provides exceptional comfort



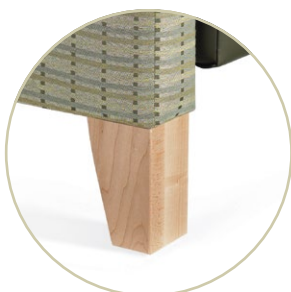
Chrome push bar is standard with the mobile base option



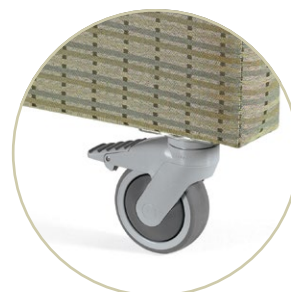
Upholstery covers are removable for easy cleaning and replacement



Removable, zippered seat cushions allow for easy cleaning and cushion replacement



Stationary base option - legs available in all Global healthcare wood finishes



Mobile base option - institutional quality locking casters (not intended for patient transfer purposes)

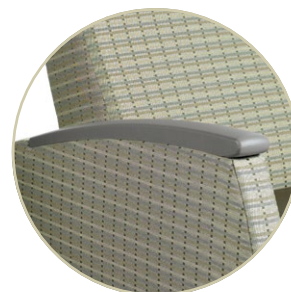
## Armcaps



Field replaceable solid wood partial armcaps, available in all Global healthcare wood finishes



Field replaceable solid wood full armcaps, available in all Global healthcare wood finishes



Field replaceable urethane full armcaps, available in Black, Kalua Latte, Mocha, Shadow and Toast

**Please visit [globalfurnituregroup.com](http://globalfurnituregroup.com) for additional product information including industry and environmental certifications.**

Cover: Shown in Mayer, Finish Line Greige, seat in Maharam, Ledger Loden, with optional urethane armcaps in Toast.



**U.S.A.**  
Global Furniture Group  
17 West Stow Road P.O. Box 562  
Marlton New Jersey U.S.A. 08053  
Tel (856) 596-3390 (800) 220-1900

**Canada**  
Global Furniture Group  
1350 Flint Rd., Toronto Ontario Canada M3J 2J7  
Sales & Marketing: Tel (1-877) 446-2251

**International**  
Global Furniture Group  
560 Supertest Road Downsview  
Ontario Canada M3J 2M6  
Tel (416) 661-3660 (800) 668-5870

Offices throughout Canada, United States, United Kingdom and Brazil. Distribution around the world. A member of Global Furniture Group. © 2023 ®™ Trademarks of Global Furniture Group. These products may be covered by one or more issued patents or pending patent applications in Canada, the U.S. and elsewhere. All intellectual property rights in applicable trademarks, patents and industrial designs are strictly reserved. Made in Canada. Specifications are correct at time of printing. Printed in Canada. Creative / Global Design Center 270923 09.0220