



OBUSFORME®

Our most popular ergonomic chair



natural 'S' curve  
support





OBUSFORME®

Global's breakthrough in office seating

multi-tilt



4470 High Back Knee-Tilter with optional 9S arm



4434 Medium Back Multi-tilter. Wide seat and back shown with standard height / width adjustable G3 arm

The OBUSFORME® backrest support system has received an extraordinary level of support from the chiropractic community. It is the only such product endorsed by the Canadian Chiropractic Association, the Chiropractic College of Radiologists and Québec Association of Chiropractors. Endorsements have also been received from the Canadian Physiotherapy Association and the Back Association of Canada.

Ergonomics is the study that deals with the interaction between humans and their activities. It is the practice of designing an environment to adapt to the characteristics of the people who are within it.

natural 'S'  
curve

A uniquely shaped polycarbonate back frame helps reduce back strain by guiding your back into a correct, healthy posture. The backrest continuously supports the natural lazy 'S' curve of your spine, flexing as you move in any direction.

**Flexible Back** a unique flexible polycarbonate back is designed to conform to the natural contours of the spine, providing horizontal and lateral support with multi-directional flexing.

**Lumbar Support** helps guide the spine into an anatomically correct position and provides added support for the lower back to ensure good posture.

**Contoured Seat** provides additional support, evenly distributing body weight and minimizing pressure under thighs to promote proper blood circulation.





Global’s breakthrough in office seating

multi-tilt



**4470** High Back Knee-Tilter with optional 9S arm



**4434** Medium Back Multi-tilter. Wide seat and back shown with standard height / width adjustable G3 arm



**4432** Low Back Multi-tilter with optional OJ kidney shaped ergo-gel arm



**4408** Low Back Synchro-tilter with optional height / width adjustable TD arm

The OBUSFORME® backrest support system has received an extraordinary level of support from the chiropractic community. It is the only such product endorsed by the Canadian Chiropractic Association, the Chiropractic College of Radiologists and Québec Association of Chiropractors. Endorsements have also been received from the Canadian Physiotherapy Association and the Back Association of Canada.

Ergonomics is the study that deals with the interaction between humans and their activities. It is the practice of designing an environment to adapt to the characteristics of the people who are within it.



**Multi-Depth (MD):** Adjustable seat depth mechanism provides additional space and comfort. Standard on the following multi-tilter models: **4430, 4431, 4432, 4433, 4434.**



**ErgoGel (OJ):** Global’s optional height adjustable, kidney shaped conforming gel armrests offer high shock absorption, and years of durable use. Armrests support and help reduce neck and shoulder strain.

“All backrests should provide adequate lumbar support and buttocks clearance. For tasks requiring upper body mobility, the backrest should provide adequate back support, but not interfere with the user’s movement (typically these backs should not be higher than the bottom of the user’s shoulder blades). For users who prefer reclining postures, or more upper back support, the back height should provide support for the shoulder blades”.

BIFMA Ergonomics Guideline Ultimate Test for Fit 2002

A quality workplace benefits everyone!

synchro-tilt



Shown with Adaptabilities, Management suite with **4470** High Back Multi Knee-Tilter and **4416** Armchairs

**OBUSFORME’s** Ultimate adjustable arm (G3), offers multiple movements so it can be adjusted for each user and their environment. Position these arms for keyboarding comfort, proper support and productivity.



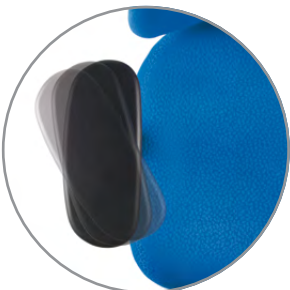
Arm slides away from seat (**WA**)



Arm moves up and down



Armcap slides forward and back



Armcap articulates inward



Armcap slides over top of seat





OBUSFORME®



Global's breakthrough in office seating

A quality workplace benefits everyone!

## multi-tilt



4470 High Back Knee-Tilter with optional 9S arm



4434 Medium Back Multi-tilter. Wide seat and back shown with standard height / width adjustable G3 arm



4432 Low Back Multi-tilter with optional OJ kidney shaped ergo-gel arm



4408 Low Back Synchro-tilter with optional height / width adjustable TD arm

## operator + posture



4442 Low Back Operator with optional height / width adjustable 4T arm with 30° Rotation



4466 Low Back Posture Task with optional height / width adjustable low rise arm 6L

## features



The OBUSFORME® backrest support system has received an extraordinary level of support from the chiropractic community. It is the only such product endorsed by the Canadian Chiropractic Association, the Chiropractic College of Radiologists and Québec Association of Chiropractors. Endorsements have also been received from the Canadian Physiotherapy Association and the Back Association of Canada.

Ergonomics is the study that deals with the interaction between humans and their activities. It is the practice of designing an environment to adapt to the characteristics of the people who are within it.



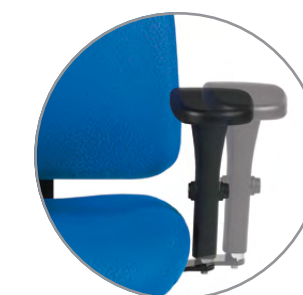
**Multi-Depth (MD):** Adjustable seat depth mechanism provides additional space and comfort. Standard on the following multi-tilter models: 4430, 4431, 4432, 4433, 4434.



**ErgoGel (OJ):** Global's optional height adjustable, kidney shaped conforming gel armrests offer high shock absorption, and years of durable use. Armrests support and help reduce neck and shoulder strain.

"All backrests should provide adequate lumbar support and buttocks clearance. For tasks requiring upper body mobility, the backrest should provide adequate back support, but not interfere with the user's movement (typically these backs should not be higher than the bottom of the user's shoulder blades). For users who prefer reclining postures, or more upper back support, the back height should provide support for the shoulder blades".

BIFMA Ergonomics Guideline Ultimate Test for Fit 2002



**Vari-Width™ (WA) Arms:** Allow armrests to slide in and out, adding up to 2" of extra room on each side. Armrests can be locked in the most comfortable position using a single lever adjustment. Standard on all height adjustable arms.

A well designed chair is comfortable and it supports the key areas of the body without restricting movement.

After the common cold, more people see doctors about back pain than any other ailment. Almost 80% of the worldwide population will suffer back or neck pain at one time or another. These conditions receive great attention from doctors, chiropractors, physiotherapists and other health care professionals, yet there is no one simple cure.

It is important to take care of your back to keep it healthy. Improving your posture and reducing the strains of everyday living will help reduce back pain and help you maintain a healthier back as you grow older.



## DESCRIPTION

**DIMENSIONS W D SEAT**  
**H IN IN IN HEIGHT**  
**mm mm mm IN mm**



**4406**  
 High Back Synchro-Tilter With Lumbar Pad / Headrest Pneumatic seat height adjustment. Five position tilt-lock.

23.5 24 50.5 17.5-22.5  
 597 610 1283 445-572



**4408**  
 Low Back Synchro-Tilter Pneumatic seat height adjustment. Five position tilt-lock.

23.5 24 41.5 17.5-22.5  
 597 610 1054 445-572



**4411**  
 Lumbar Pad / Headrest 4411-WB also available for wide back models.

9 3 5  
 229 76 127



**4416**  
 Armchair with self-skinned urethane armcaps.

23 22 39.5 19  
 584 559 1003 483



**4417**  
 Sidechair with cantilever base.

19.5 22 39.5 19  
 495 559 1003 483



**4430**  
 High Back Multi-Tilter With Lumbar Pad / Headrest Pneumatic seat height adjustment. Infinite tilt-lock.

23.5 23.5 53.5 17-21  
 597 597 1359 432-533



**4432**  
 Low Back Multi-Tilter Pneumatic seat height adjustment. Infinite tilt-lock.

23.5 23.5 42.5 17-21  
 597 597 1080 432-533



**4434**  
 Medium Back Multi-Tilter Wide Seat and Back Pneumatic seat height adjustment. Infinite tilt-lock.

26 24 44 17-21  
 660 610 1118 432-533

## DESCRIPTION

**DIMENSIONS W D SEAT**  
**H IN IN IN HEIGHT**  
**mm mm mm IN mm**



**4442**  
 Low Back Operator Pneumatic seat height adjustment. Forward and rearward seat tilt.

23.5 24 43 17.5-22.5  
 597 610 1092 445-572



**4443**  
 Low Back Operator Pneumatic seat height adjustment. Forward and rearward seat tilt.

20.5 24 43 17.5-22.5  
 521 610 1092 445-572



**4444**  
 Medium Back Operator Wide Seat and Back Pneumatic seat height adjustment. Forward and rearward seat tilt.

26 24 44 17.5-22.5  
 660 610 1118 445-572



**4466**  
 Low Back Posture Task Pneumatic seat height adjustment. Back angle adjustment.

23.5 24 42 16.5-21.5  
 597 610 1067 419-546



**4470**  
 High Back Knee-Tilter With Lumbar Pad / Headrest Pneumatic seat height adjustment. Infinite tilt-lock. Back angle/height adjustment.

23.5 23.5 53 18-22  
 597 597 1346 457-559



**4472**  
 Low Back Knee-Tilter Pneumatic seat height adjustment. Infinite tilt-lock. Back angle/height adjustment.

23.5 23.5 42 18-22  
 597 597 1067 457-559



**4482**  
 Low Back Posture Drafting Stool Pneumatic seat height adjustment. Back angle/height adjustment. Height adjustable chromed footrest.

23.5 24 51 23-33  
 597 610 1295 584-838



**4483**  
 Low Back Posture Drafting Stool Pneumatic seat height adjustment. Back angle/height adjustment. Height adjustable chromed footrest.

19.5 24 51 23-33  
 495 610 1295 584-838

## U.S.A.

Global Furniture Group  
 17 West Stow Road P.O. Box 562  
 Marlton New Jersey U.S.A. 08053  
 Tel (856) 596-3390 (800) 220-1900

## Canada

Global Furniture Group  
 1350 Flint Rd., Toronto Ontario Canada M3J 2J7  
 Sales & Marketing: Tel (1-877) 446-2251

## International.

Global Furniture Group  
 560 Supertest Road, Toronto  
 Ontario Canada M3J 2M6  
 Tel (416) 661-3660 (800) 668-5870