

## GLOBAL FINISHES



# Wood Veneer

### Desks, tables & accessories

Please check availability of individual finishes for each desking series. Some finishes may be specific to certain series.



**WMW** White Maple  
(Flat Sliced Maple)



**MPW** Natural Maple  
(Flat Sliced Maple)



**SMW** Honey Maple  
(Flat Sliced Maple)



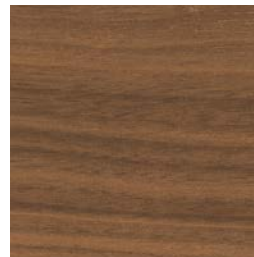
**CRW** Coral  
(Rift Cut White Oak)



**GRW** Grey on Oak  
(Flat Sliced Red Oak)



**AMW** Almond Cherry  
(Flat Sliced Cherry)



**LTW** Latte Walnut  
(Flat Sliced Walnut)



**MTW** Milestone  
(Rift Cut White Oak)



**WCW** Warm Cherry  
(Flat Sliced Cherry)



**RCW** Red Cherry  
(Flat Sliced Cherry)



**HAW** Hazelnut  
(Flat Sliced Maple)



**WLW** Walnut  
(Flat Sliced Walnut)



**MCW** Mocha  
(Rift Cut White Oak)



**CAW** Cocoa Walnut  
(Flat Sliced Walnut)



**DCW** Dark Cherry  
(Flat Sliced Cherry)



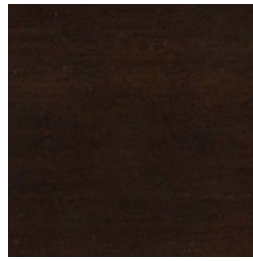
**VNW** Vintage Cherry  
(Flat Sliced Cherry)



**EVW** Evening Oak  
(Rift Cut White Oak)

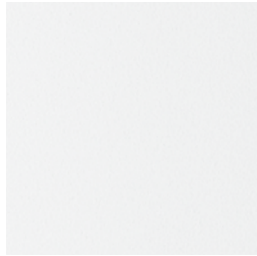


**JAW** Java  
(Rift Cut White Oak)



**EWW** Espresso Walnut  
(Flat Sliced Walnut)

## CONTRASTING DESKING LAMINATES (OFFERED ON SELECT WOOD VENEER SERIES)



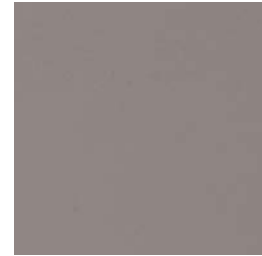
**WHT** White



**CGY** Custom Grey



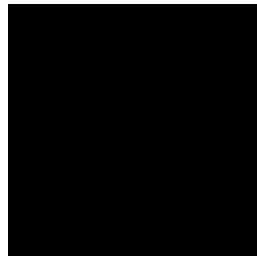
**STG** String



**HGT** Hayden Grey



**SOG** Storm Grey



**BLK** Black

Coordinating laminates shown above can be specified on select series. Please refer to the Wood Veneer List Price Book for components and details.

**Laminate Note:**

Laminate finishes listed on this card are not available on all Global Desking products. Please see current Global Price List to determine applicable series. Some finishes are available as a special with an upcharge.

**Laminate Care:**

Cleaning laminates is easy. Wipe surfaces with a soft cloth dampened with a mild soap.

**Wood Veneer Note:** Global uses only "Number one select, architectural grade A" red oak, American black walnut, American black cherry and hard maple veneers. This description reflects the quality (well developed heart-graining of cathedrals), clarity (largely free of knots, sap pockets and natural defects) and consistency of the veneer and solids.

Wood veneer products receive many preparation steps, including two stain and two sealer coats. Then two finish coats of conversion varnish, one of the most durable finishes used in the Contract Furniture Industry, are applied. Conversion varnish is a synthetic, catalyst cured (chemically active) finish, containing UV inhibitors to slow the oxidizing (color changing) effects of ultraviolet rays on wood.

**Wood Veneer Finish Care:** Global's wood veneer furniture is constructed to strict specifications to ensure years of satisfied use. As with all wood products, certain care requirements and periodic maintenance are necessary in order to maintain the original appearance and function. Waxing or polishing catalyzed finishes is not recommended and could void the product warranty. Global's conversion varnish is best cleaned by wiping the surfaces with a damp cloth, followed by a soft dry cloth in the direction of the grain. If the surfaces are heavily soiled, a gentle product like "Windex" can be used, following the same instructions as above.

Color samples shown on this card are as close to actual materials as current printing technologies will allow. If you require an actual sample, please contact your local sales representative or literature department.

**U.S.A.**  
Global Furniture Group  
17 West Stow Road P.O. Box 562  
Marlton New Jersey U.S.A. 08053  
Tel (856) 596-3390 (800) 220-1900

**Canada**  
Global Furniture Group  
1350 Flint Road, Toronto  
Ontario Canada M3J 2J7  
Sales & Marketing: Tel (877) 446-2251

**International**  
Global Furniture Group  
560 Supertest Road, Toronto  
Ontario Canada M3J 2M6  
Tel (416) 661-3660 (800) 668-5870

Visit us online at [globalfurnituregroup.com](http://globalfurnituregroup.com)

Offices throughout Canada, United States, United Kingdom and Brazil. Distribution around the world. A member of Global Furniture Group.