



# Oriza



---

# Personalize your space



From the office to the boardroom and everything in between, Zira™ will create an impression from the moment you walk through the front door. Zira is a complete workplace solution rooted in tradition with contemporary appeal.

Integrated wall panels and floating shelf elements deliver a custom millwork look to any space without the additional cost.

Desking shown in Absolute Acajou with Factor seating. Swap table with Drift seating.

---

## Showcase executive appeal



For executive offices and management applications, create work environments that meet your work style and storage needs. Select from a range of classic and current laminate finish combinations and storage components that can tower up to 84" high. Extensive options personalize your space.

Integrated height adjustable capabilities provide a clean visual while allowing for sit-to-stand movement throughout the day.

---

# Create the look and fit that's you



Zira has a wide range of models and options that can provide both a traditional or contemporary appearance and layout. The open metal leg for worksurfaces and returns creates a modern look that integrates perfectly with a wide range of open and closed storage options. Zira has the right fit for any working style.

Additional information can be found on the Global [website](#).

# Define your place. Work together



Shared workplace configurations are a great way to use Zira wall panels, floating shelves and storage elements. Use the storage elements to define and personalize individual space while supporting collaboration between team members with an efficient footprint.

---

## Ideal for sharing spaces and ideas



Zira offers hundreds of mix and match components to meet any design specification. Components can be freestanding for single workstation configurations, or brought together to form multiple work groups.

# Bring people and technology together



Collaborative thinking requires collaborative spaces. Zira offers a wide range of tables and accessories that promote this modern approach to office life. Café and bar height options create an airy, open feel. Easy access bases provide channels for wires to power your meeting.

Additional information can be found on the Global [website](#).

# A closer look



## Accessories



Visual board



Lectern



Multimedia cart



Serving cart



Buffet cart

## Features



Power block (closed)



Grommet



1.5" standard flat edge



Multiple power block configurations available (open)



Easy access to wire management



1.5" bicut edge

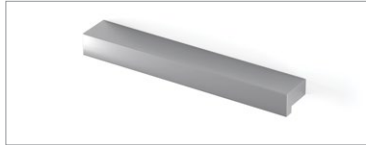


1.5" fluted edge



# It's in the details

## Handles



Bar Silver



Square edge Silver



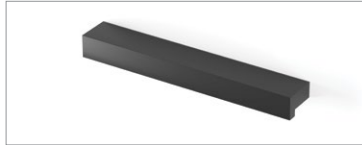
Flared Silver



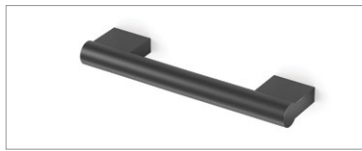
Flared Brass



Dimpled Nickel



Bar Black



Square edge Black



Flared Black



Crescent Black

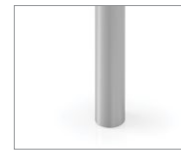
## Legs



Square 4" Silver



Square 4" Black



Round 4" Silver



Round 4" Black



O-leg Silver

# It's in the details

## Edges



1" standard flat edge



1" with bicut edge



1.5" standard flat edge

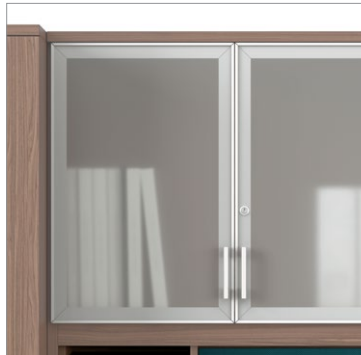


1.5" with bicut edge

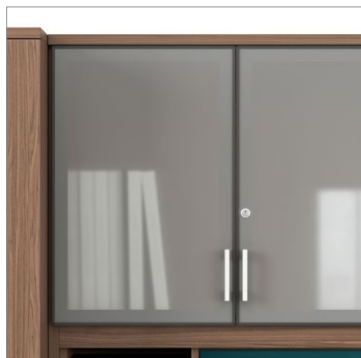


1.5" with fluted edge

## Options



Glazed doors available in two glazing options with Silver frames



Glazed doors available in two glazing options with Black frames



Collator option is available in Black or Brushed Cobalt finish



Modesty (glazed shown)



Faux pedestal

Please visit [globalfurnituregroup.com](http://globalfurnituregroup.com) for additional product information including industry and environmental certifications.

Cover: Desking shown in Walnut Heights with Drift seating.

Above: Desking shown in Walnut Heights.



**U.S.A.**  
Global Furniture Group  
17 West Stow Road P.O. Box 562  
Marlton New Jersey U.S.A. 08053  
Tel (856) 596-2390 (800) 220-1900

**Canada**  
Global Furniture Group  
1350 Flint Rd., Toronto Ontario Canada M3J 2J7  
Sales & Marketing: Tel (1-877) 446-2251

**International**  
Global Furniture Group  
560 Supertest Road, Toronto  
Ontario Canada M3J 2M6  
Tel (416) 661-3660 (800) 668-5870

Offices throughout Canada, United States, United Kingdom and Brazil. Distribution around the world. A member of Global Furniture Group. © 2024 ©™ Trademarks of Global Furniture Group. These products may be covered by one or more issued patents or pending patent applications in Canada, the U.S. and elsewhere. All intellectual property rights in applicable trademarks, patents and industrial designs are strictly reserved. Made in Canada. Specifications are correct at time of printing. Printed in Canada. Creative / Global Design Center 041124 20.0088