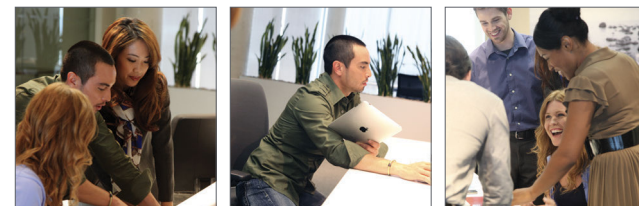
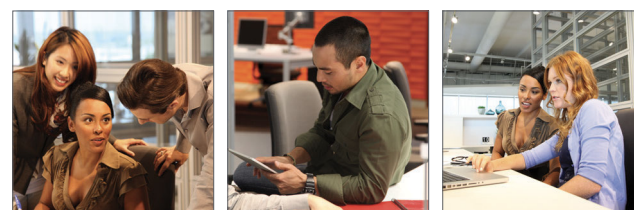




Engage and co-create, bridges facilitates collaborative teamwork connecting people and ideas in a corporate setting.



At its core, bridges focuses on linear, back2back table assemblies. It's expanded toolbox makes it ideal for a multitude of workspace solutions.



CONNECT SHARE ACHIEVE

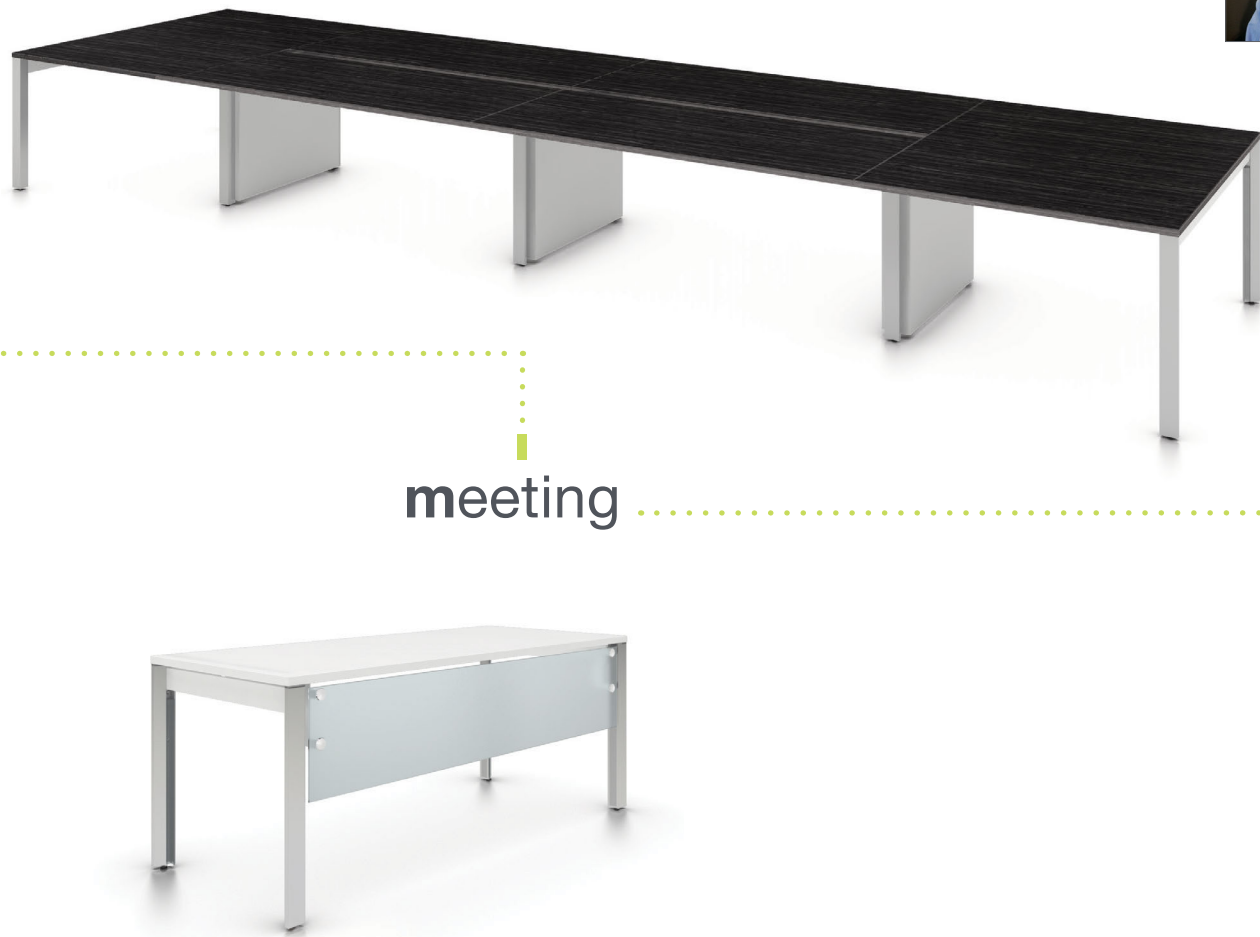
benching



desking



meeting



Intuitively designed and flexible, bridges offers a range of inspired features that will allow you to transform your workspace.



integrated
connects to boulevard,
system 3 and evolve



bridges

allows you to connect the dots in different ways from benching to desking, meeting rooms to systems. Redefine how you connect and share. Bridges provides you the tools to achieve so much more.



Round leg features incremental height adjustment



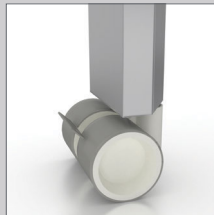
Rectangular leg features integrated wire management



Universal diecast beam connector creates rigid structure and simplifies specification



Laminate gables connect between legs for added privacy



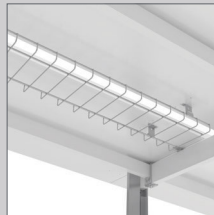
Optional caster



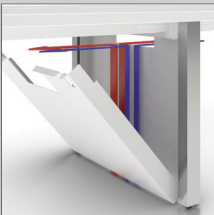
Below worksurface power/data trough with anodized aluminum access doors



Above worksurface power/data trough



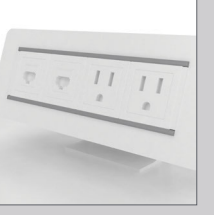
Power/data cable basket can be located below worksurface or freestanding storage components



Wire management shroud is located between 34" connecting leg



Vertical power/data monument can be located between storage components



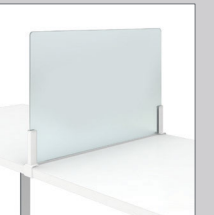
Desktop power/data module



Back2back dividing panels in glass or laminate



Back2back stack on storage with sliding door



Perpendicular glass dividing panels



Panel supporting storage integrates with system 3